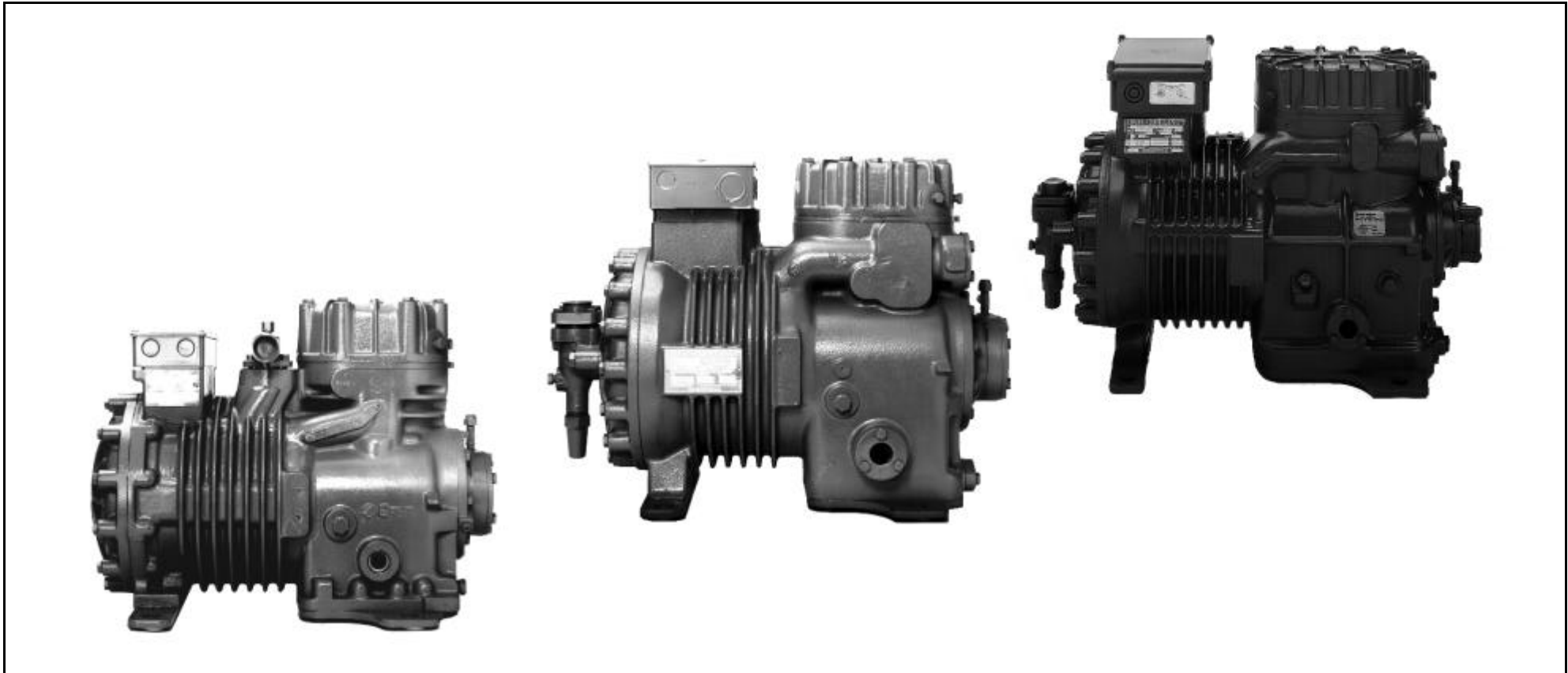

DWM COPELAND

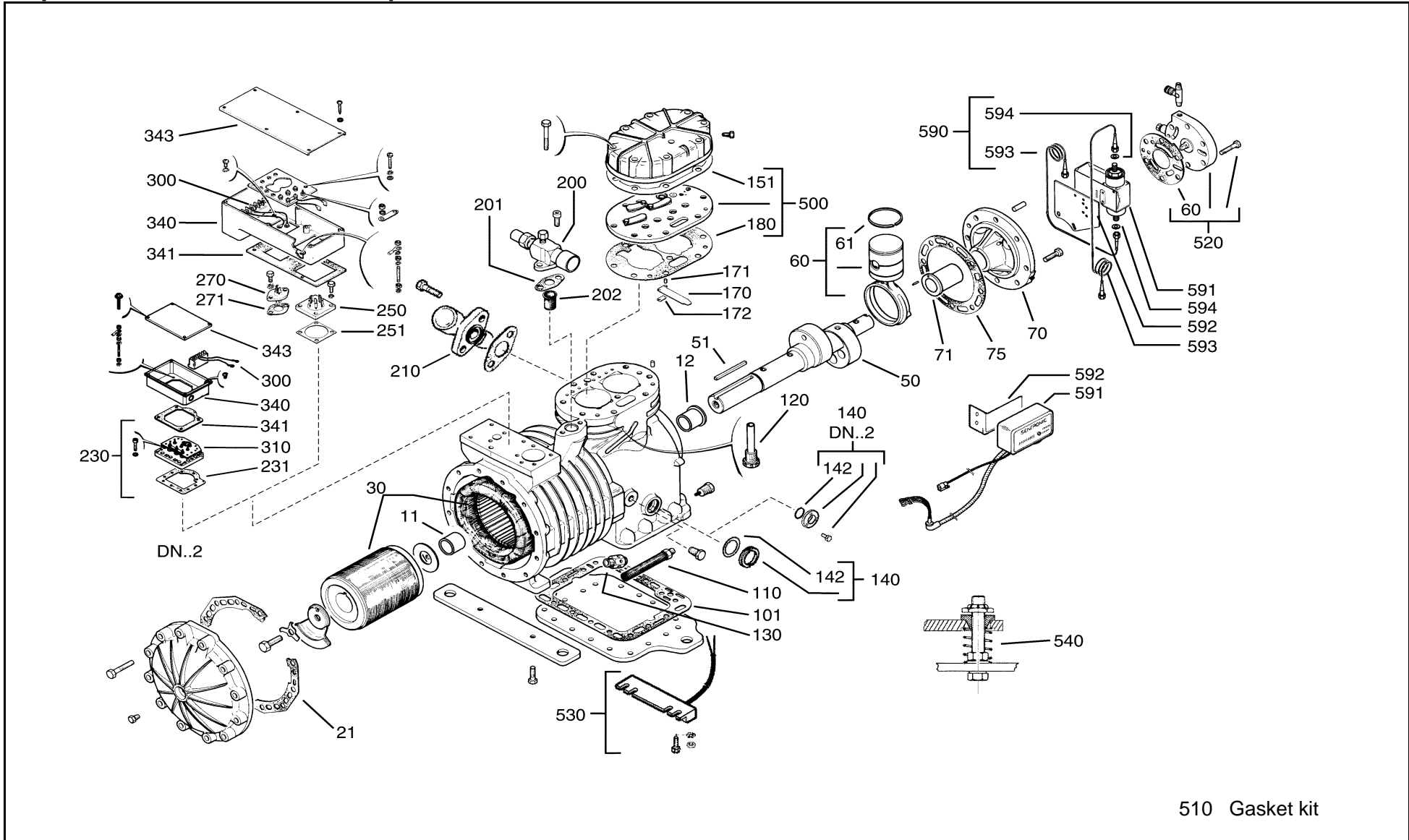
Spare Parts List for
Motor Compressors

DN, DM, D9



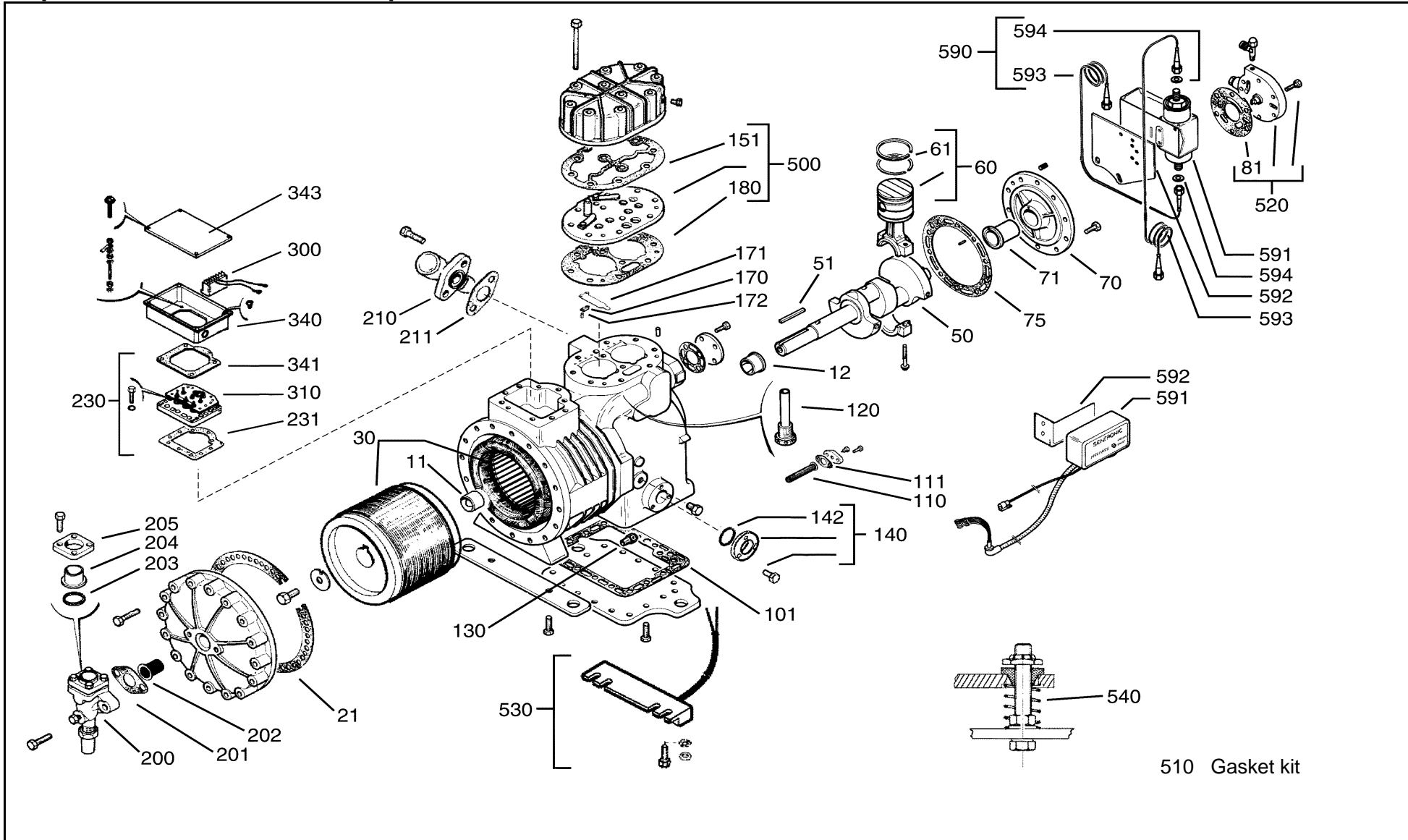
Exploded View of a Motor Compressor

DN



Exploded View of a Motor Compressor

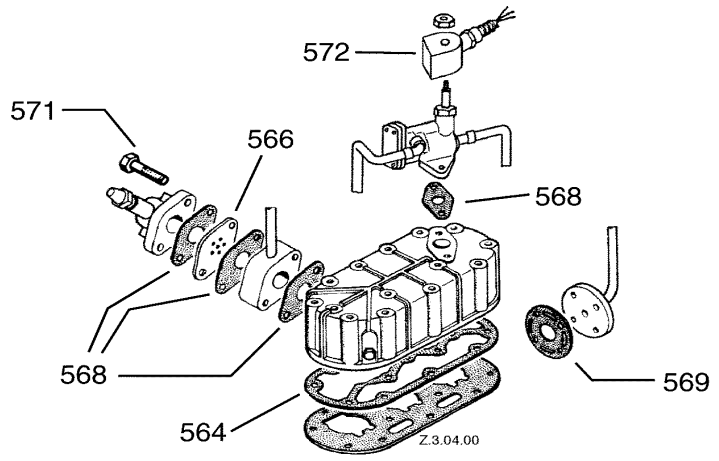
DM



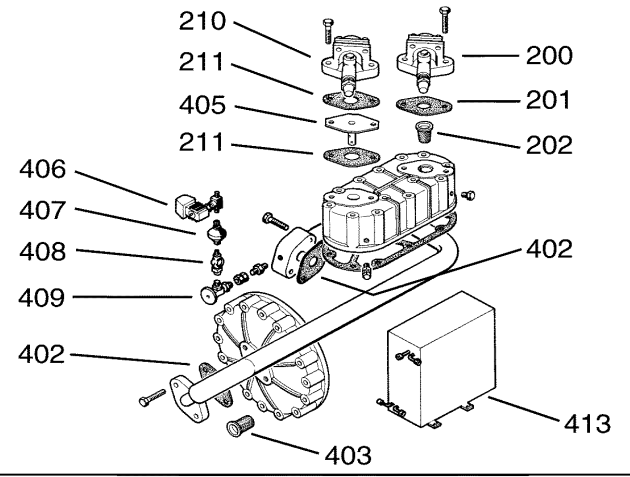
Exploded View of a Accessories

DN, DM, D9

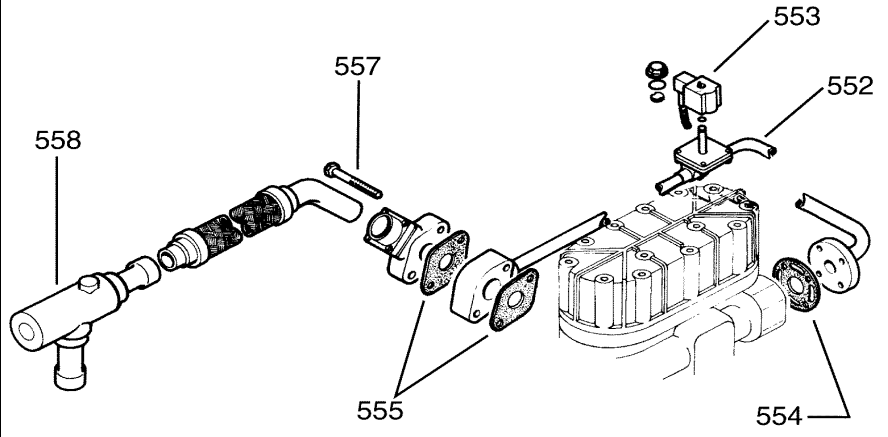
Capacity control D9R..



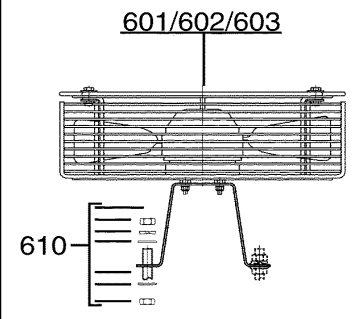
Differing parts for 2-stage compressors



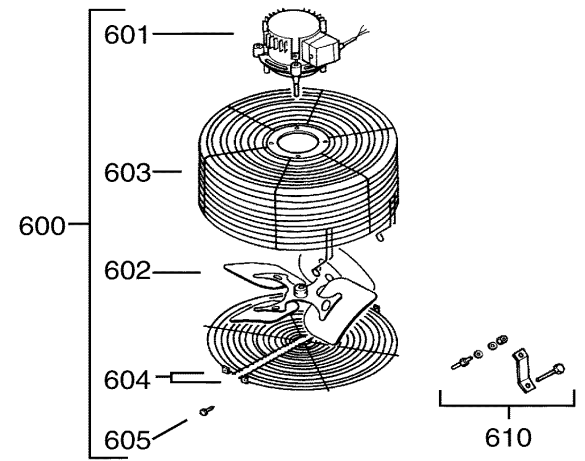
550 Unloaded start



600 Additional fan EBM 75 Z



600 Additional fan 60W



Oil balance tube 2 compressors

DN, DM, D9

Oil balance tube for 2 compressors DN..2, DM, D9

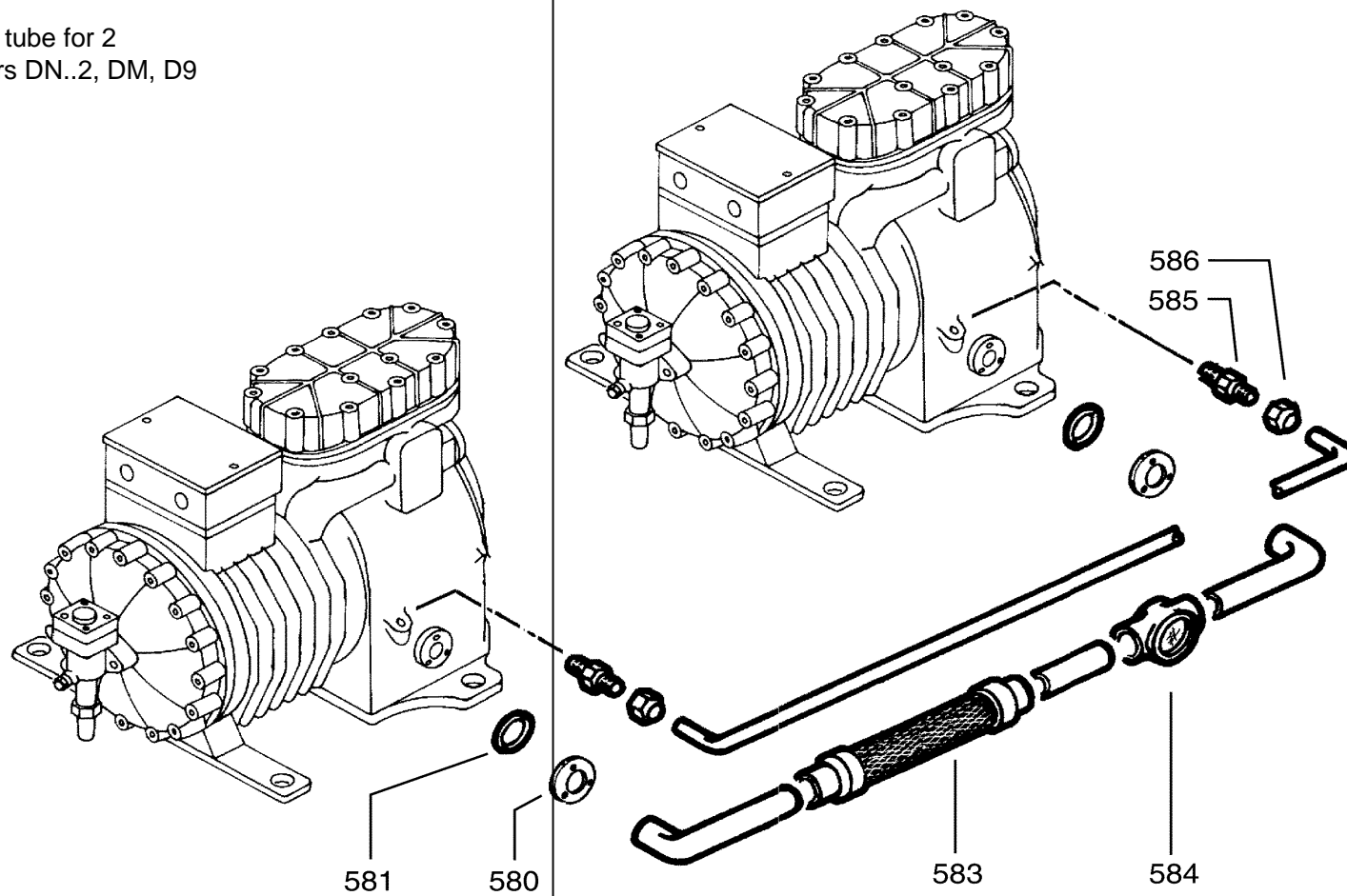


Diagram No.	Description	Part No.	Compressors marked with a "X" in the model name, e.g. D9TH*-101X, are charged with ester oil and have the same parts as the standard compressors																									
			DNRA* - 300	DNRB* - 400	DNRA* - 500	DNHB* - 253	DNHA* - 303	DNHM* - 373	DNHB* - 403	DNHA* - 503	DNHM* - 603	DMRH* - 500	DMRH* - 500L	DMRH* - 750	D9RA* - 500L	D9RC* - 500L	D9RA* - 750	D9RC* - 750	D9RC* - 750L	D9RC* - 1000	D9RS* - 1000	D9RS* - 1000L	D9RS* - 1500	D9TK* - 0760	D9TL* - 0760	D9TH* - 0760	D9TH* - 1010	
11	Body main bearing plain, motor side	2047056	1	1	1	1	1	1	1	1	1	1	1	1	1	1	1	1	1	1	1	1	1	1	1	1	1	1
11	Body main bearing plain, motor side	2047443												1	1	1												
11	Body main bearing plain until model version 2 e.g. D9RC2-1000, D9TH2-0760	2048708																										
11	Body main bearing plain from model version 3 e.g. D9RC3-1000, D9TH3-0760	2940860																										
12	Body main bearing thrust, gear side	2047283	1	1	1	1	1	1	1	1	1	1	1															
12	Body main bearing thrust, gear side	2047432												1	1	1												
12	Body main bearing thrust to model version 2 to example D9RC2-1000, D9TH2-0760	2048695																										
12	Body main bearing thrust from model version 3 e.g. D9RC3-1000, D9TH3-0760	2940871																										
21	Gasket for stator cover	2525138	1	1	1	1	1	1	1	1	1	1	1															
21	Gasket for stator cover	2950418												1	1	1	1	1	1	1	1	1	1	1	1	1	1	1
30	Motor unit 3HP EWM/D	2569429	1																									
30	Motor unit 3HP EWL/N	2569418	1																									
30	Motor unit 3HP EWK	2569463	1																									
30	Motor unit 5HP EWM/D	2569010		1	1																							
30	Motor unit 5HP EWL/N	2569009		1	1																							
30	Motor unit 5HP EWK	2569032		1	1																							
30	Motor unit 2,5HP EWL	4563416				1	1		1																			
30	Motor unit 3HP EWM	4563621						1		1																		
30	Motor unit 3HP EWL	4563610						1		1																		
30	Motor unit 3,75HP EWM	4564237									1																	
30	Motor unit 3,75HP EWL	4564215									1																	
30	Motor unit 5HP AWM/D	4565558										1	1		1	1												
30	Motor unit 5HP EWM/D	2569076										1	1		1	1												
30	Motor unit 5HP EWL/N	2569065										1	1		1	1												
30	Motor unit 5HP EWK	2569101										1	1		1	1												
30	Motor unit 7,5HP AWM/D	4566380														1	1	1							1	1		
30	Motor unit 7,5HP EWM/D	2569156														1		1	1	1					1	1		
30	Motor unit 7,5HP EWL/N	2569145														1		1	1	1					1	1		
30	Motor unit 7,5HP EWK	2569190														1		1	1	1					1	1		
30	Motor unit 10HP AWM/D	4567123																			1	1	1				1	1
30	Motor unit 10HP EWM/D	2569236																			1	1	1				1	1
30	Motor unit 10HP EWL/N	2569225																			1	1	1				1	1
30	Motor unit 10HP EWK	2569270																			1	1	1				1	1
30	Motor unit 15HP AWM/D	4567474																						1				

Diagram No.	Description	Part No.	Compressors marked with a "X" in the model name, e.g. D9TH*-101X, are charged with ester oil and have the same parts as the standard compressors																									
			DNRA* - 300	DNRB* - 400	DNRA* - 500	DNHB* - 253	DNHA* - 303	DNHM* - 373	DNHB* - 403	DNHA* - 503	DNHM* - 603	DMRH* - 500	DMRH* - 500L	DMRH* - 750	D9RA* - 500L	D9RC* - 500L	D9RA* - 750	D9RC* - 750	D9RC* - 750L	D9RC* - 1000	D9RS* - 1000	D9RS* - 1000L	D9RS* - 1500	D9TK* - 0760	D9TL* - 0760	D9TH* - 0760	D9TH* - 1010	
30	Motor unit 15HP EWM/D	2569316																										
30	Motor unit 15HP EWL/N	2569305																										
30	Motor unit 15HP EWK	2569349																										
50	Eccentric shaft	2912432	1	1	1	1	1																					
50	Crankshaft	2916536						1			1																	
50	Crankshaft	2934656									1	1	1															
50	Crankshaft until model variation 3 e.g. D9RC2-750	2934838													1	1	1	1	1									
50	Crankshaft for model version without body code e.g. D9TK-0760, not available anymore	2933493																							1	1		
50	Crankshaft for model version 4 of standard compressors e.g. D9RC4-750 respectively from 1 of 2-stage compressors e.g. D9TK3-0760	2938001													1	1	1	1	1						1	1		
50	Crankshaft until model version 3 e.g. D9RC2-1000, not available anymore	2934849																			1							
50	Crankshaft from model version 4 e.g. D9RC4-1000	2938012																			1							
50	Crankshaft until model version 3 e.g. D9RS2-1000, not available anymore	2859560																				1	1	1				
50	Crankshaft from model version 4 e.g. D9RS4-1000	2938023																				1	1	1				
50	Crankshaft for model version without body code e.g. D9TH-0760, not available anymore	2933506																									1	1
50	Crankshaft from model variation 1 e.g. D9TH3-0760	2938023																								1	1	
51	Crankshaft key	2048946	1	1	1										1	1	1	1	1	1	1	1	1			1	1	
51	Crankshaft key	2474207				1	1			1	1																	
51	Crankshaft key	2940019						1			1														1	1		
51	Crankshaft key	2914950										1	1	1														
60	Piston con-rod assy, 2 pcs per kit	2836014	1		1																							
60	Piston con-rod assy, 2 pcs per kit	2836025		1																								
60	Piston con-rod assy, 2 pcs per kit	2836036				1				1																		
60	Piston con-rod assy, 2 pcs per kit	2836047					1				1																	
60	Piston con-rod assy, 2 pcs per kit	2836058						1			1																	
60	Piston con-rod assy, 2 pcs per kit	2836069										1	1	1														
60	Piston con-rod assy, 3 pcs per kit, for model version 1, 2, 3 e.g. D9RA2-750	2836070													1		1											
60	Piston con-rod assy, 3 pcs per kit, for model version 4 e.g. D9RA4-750	2836183													1		1											
60	Piston con-rod assy, 3 pcs per kit, for model version 1, 2, 3 e.g. D9RC2-1000	2836081														1		1	1	1								

Diagram No.	Description	Part No.	Compressors marked with a "X" in the model name, e.g. D9TH*-101X, are charged with ester oil and have the same parts as the standard compressors																										
			DNRA* - 300	DNRB* - 400	DNRA* - 500	DNHB* - 253	DNHA* - 303	DNHM* - 373	DNHB* - 403	DNHA* - 503	DNHM* - 603	DMRH* - 500	DMRH* - 500L	DMRH* - 750	D9RA* - 500L	D9RC* - 500L	D9RA* - 750	D9RC* - 750	D9RC* - 750L	D9RC* - 1000	D9RS* - 1000	D9RS* - 1000L	D9RS* - 1500	D9TK* - 0760	D9TL* - 0760	D9TH* - 0760	D9TH* - 1010		
60	Piston con-rod assy, 3 pcs per kit, for model version 4 e.g. D9RC4-1000	2836194													1		1	1	1										
60	Piston con-rod assy, 3 pcs per kit, for model version 1, 2, 3 e.g. D9RS2-1500	2836105																			1	1	1						
60	Piston con-rod assy, 3 pcs per kit, for model version 4 e.g. D9RS4-1500	3805884																			1	1	1						
60	Piston con-rod assy, 3 pcs per kit, for D9TK-0760	2836070																							1				
60	Piston con-rod assy, 3 pcs per kit, for model version 1, 2, 3 e.g. D9TK2-0760	2836183																							1				
60	Piston con-rod assy, 3 pcs per kit, for D9TL-0760	2836081																							1				
60	Piston con-rod assy, 3 pcs per kit, for model version 1, 2, 3 e.g. D9TL2-0760	2836194																							1				
60	Piston con-rod assy, 3 pcs per kit, for D9TH-0760, D9TH-1010	3808236																								1	1		
60	Piston con-rod assy, 3 pcs per kit, for model version 1, 2, 3 e.g. D9TH2-1010	2836207																								1	1		
61	Piston ring	2046246	2		2		2			2																			
61	Piston ring	2045436		2		2				2																			
61	Piston ring	2829669						4			4																		
61	Piston ring	2918872										4	4	4															
61	Piston ring	2918849												3		3					3				3				
61	Piston ring	2918838												3		3							3						
61	Piston ring	2918850																		3		3	3	3					
61	Piston ring	2937995																			3		3	3	3			3	3
70	Housing cover with bearing	2912943	1	1	1	1	1		1	1																	3	3	
70	Housing cover with bearing	2919455						1			1																		
70	Housing cover with bearing	2970614										1	1	1															
70	Housing cover with bearing for model versions 1... 3 on standard-compressors, e.g. D9RC2-1000 respectively w/o version number on 2-stage compressors, e.g. D9TH-0760	2188873													1	1	1	1	1	1	1	1	1	1	1	1	1	1	
70	Housing cover with bearing for model version 4 on standard-compressors, e.g. D9RC4-1000 respectively from 1 on 2-stage compressors, e.g. D9TH3-0760	2947327													1	1	1	1	1	1	1	1	1	1	1	1	1	1	
71	Bearing	2641618	1	1	1	1	1	1		1																			
71	Bearing	3054799								1		1																	
71	Bearing (for compressors with bronze bearing use complete housing cover 2970614)	2961547										1	1	1															

Diagram No.	Description	Part No.	Compressors marked with a "X" in the model name, e.g. D9TH*-101X, are charged with ester oil and have the same parts as the standard compressors																									
			DNRA* - 300	DNRB* - 400	DNRA* - 500	DNHB* - 253	DNHA* - 303	DNHM* - 373	DNHB* - 403	DNHA* - 503	DNHM* - 603	DMRH* - 500	DMRH* - 500L	DMRH* - 750	D9RA* - 500L	D9RC* - 500L	D9RA* - 750	D9RC* - 750	D9RC* - 750L	D9RC* - 1000	D9RS* - 1000	D9RS* - 1000L	D9RS* - 1500	D9TK* - 0760	D9TL* - 0760	D9TH* - 0760	D9TH* - 1010	
180	Gasket for valve plate below valve plate	2953462					1																					
180	Gasket for valve plate below valve plate	2953484						1			1																	
180	Gasket for valve plate below valve plate	2950430									1	1	1															
180	Gasket for valve plate below valve plate	2950474											1		1									1				
180	Gasket for valve plate below valve plate	2950463												1		1	1	1							1			
180	Gasket for valve plate below valve plate	2950496																		1	1	1						
180	Gasket for valve plate below valve plate	2950485																								1	1	
191	Sleeve for crankcase heater	2948091											1	1	1	1	1	1	1	1	1	1	1	1	1	1	1	
200/201	Suction shut-off valve with gasket, sweat 1 1/8"	2837051	1	1	1	1	1	1	1	1																		
200/201	Suction shut-off valve with gasket, sweat 1 3/8"	2837062										1	1	1	1	1	1	1	1	1	1	1		1	1	1	1	
200/201	Suction shut-off valve with gasket, sweat 1 5/8"/42 mm	2837084																					1					
	Suction shut-off valve with gasket, sweat 2 1/8" Tandem-compressors	2837119										1	1	1	1	1	1	1	1	1	1	1	1					
201	Gasket for suction shut-off valve	2949765	1	1	1	1	1	1	1	1																		
201	Gasket for suction shut-off valve	2963043										1	1	1	1	1	1	1	1	1	1	1		1	1	1	1	
201	Gasket for suction shut-off valve	2880851																					1					
	Gasket for suction shut-off valve Tandem-compressors	2880862										1	1	1	1	1	1	1	1	1	1	1	1					
201/202	Suction screen with gasket	2846151	1	1	1	1	1	1	1	1																		
201/202	Suction screen with gasket	3806729										1	1	1														
201/202	Suction screen with gasket	3806752												1	1	1	1	1	1	1	1	1						
201/202	Suction screen with gasket	3806763																						1				
201/202	Suction screen with gasket, low pressure	3806752																							1	1	1	1
203	Gasket for pipe socket	2880884										1	1	1	1	1	1	1	1	1	1	1		1	1	1	1	
203	Gasket for pipe socket Henry	2880895																					1					
203	Gasket for pipe socket Nobis	2881467																					1					
	Gasket for pipe socket, suction shut-off valve Tandem-compressors	3091932										1	1	1	1	1	1	1	1	1	1	1	1					
204	Pipe socket 1 3/8"	2048060										1	1	1	1	1	1	1	1	1	1	1		1	1	1	1	
204	Pipe socket 1 5/8"/42 mm Henry	2938829																					1					
204	Pipe socket 1 5/8"/42 mm Nobis	2938830																					1					
	Pipe socket 2 1/8" Henry Tandem-compressors	2832830										1	1	1	1	1	1	1	1	1	1	1	1					
	Pipe socket 2 1/8" Nobis Tandem-compressors	2832841										1	1	1	1	1	1	1	1	1	1	1	1					
205	Flange 1 3/8"	2045152										1	1	1	1	1	1	1	1	1	1	1		1	1	1	1	
205	Flange 1 5/8"/42 mm Henry/Nobis	2050078																						1				
	Flange 2 1/8" Henry Tandem-compressors	2050578										1	1	1	1	1	1	1	1	1	1	1	1					
	Flange 2 1/8" Nobis Tandem-compressors	2946846										1	1	1	1	1	1	1	1	1	1	1	1					
210/211	Discharge shut-off valve with gasket, sweat 5/8"	3806683	1	1	1	1	1	1	1	1																		
210/211	Discharge shut-off valve with gasket, flare 5/8"	2837028	1	1	1	1	1	1	1	1																		

Diagram No.	Description	Part No.	Compressors marked with a "X" in the model name, e.g. D9TH*-101X, are charged with ester oil and have the same parts as the standard compressors																									
			DNRA* - 300	DNRB* - 400	DNRA* - 500	DNHB* - 253	DNHA* - 303	DNHM* - 373	DNHB* - 403	DNHA* - 503	DNHM* - 603	DMRH* - 500	DMRH* - 500L	DMRH* - 750	D9RA* - 500L	D9RC* - 500L	D9RA* - 750	D9RC* - 750	D9RC* - 750L	D9RC* - 1000	D9RS* - 1000	D9RS* - 1000L	D9RS* - 1500	D9TK* - 0760	D9TL* - 0760	D9TH* - 0760	D9TH* - 1010	
210/211	Discharge shut-off valve with gasket, sweat 7/8"	2837073																										
210/211	Discharge shut-off valve with gasket, sweat 1 1/8"	2837051																										
210/211	Discharge shut-off valve with gasket, sweat 7/8"	2837095																										
210/211	Discharge shut-off valve with gasket, sweat 1 1/8"	2837108																										
211	Gasket for discharge shut-off valve	2529947	1	1	1	1	1	1	1	1	1																	
211	Gasket for discharge shut-off valve	2949765										1	1	1														
211	Gasket for suction shut-off valve	2963043																										
213	Gasket for pipe socket	2880884																										
214	Pipe socket 7/8"	2045141																										
214	Pipe socket 1 1/8"	2045936																										
215	Flange	2859720																										
	Shipping plate with gasket and screws (kit), suction side	2846071	1	1	1	1	1	1	1	1	1																	
	Shipping plate with gasket and screws (kit), suction side	2846082																										
	Shipping plate with gasket and screws (kit), suction side	2846093																										
	Shipping plate with gasket and screws (kit), discharge side	2846071	1	1	1	1	1	1	1	1	1	1	1															
	Shipping plate with gasket and screws (kit), discharge side	2846082																										
	Discharge temperature protection, conversion kit	2829385																										
	Discharge temperature protection, conversion kit	2829409																										
	Discharge temperature protection, conversion kit with capacity control	2829396																										
	Discharge temperature protection, conversion kit with capacity control	2829410																										
	Discharge temperature protection, temperature sensor	2912374																										
	Discharge temperature protection, temperature sensor	2912363																										
	Discharge temperature protection, module Kriwan INT 69 V external 220 V	2912501																										
221	Gasket for cover plate	2959880																										
230	Terminal plate assy model version 2 e.g. DNRA2-500	2834596	1	1	1	1	1	1	1	1																		
230	Terminal plate assy	2834596																										
231	Gasket for terminal plate model version 2 on DN... e.g. DNRA2-500	2952823	1	1	1	1	1	1	1	1																		
231	Gasket for terminal plate	2952823																										
250	Fusite, Terminal assy 6-pole for model version w/o 2 only, e.g. DNRA-500	2727274	1	1	1	1	1	1	1	1																		
251	Gasket for fusite, terminal assy	2727887	1	1	1	1	1	1	1	1																		
270	Fusite, Terminal assy 2-pole for model version w/o 2 only, e.g. DNRA-500	2489656	1	1	1	1	1	1	1	1																		
271	Gasket for fusite, terminal assy	2946084	1	1	1	1	1	1	1	1																		

Diagram No.	Description	Part No.	Compressors marked with a "X" in the model name, e.g. D9TH*-101X, are charged with ester oil and have the same parts as the standard compressors																									
			DNRA* - 300	DNRB* - 400	DNRA* - 500	DNHB* - 253	DNHA* - 303	DNHM* - 373	DNHB* - 403	DNHA* - 503	DNHM* - 603	DMRH* - 500	DMRH* - 500L	DMRH* - 750	D9RA* - 500L	D9RC* - 500L	D9RA* - 750	D9RC* - 750	D9RC* - 750L	D9RC* - 1000	D9RS* - 1000	D9RS* - 1000L	D9RS* - 1500	D9TK* - 0760	D9TL* - 0760	D9TH* - 0760	D9TH* - 1010	
300	Module for VW-protection Kriwan INT 69 internal 24 V, DC	2832465	1	1	1	1	1	1	1	1	1	1	1	1	1	1	1	1	1	1	1	1	1	1	1	1	1	
300	Module for VW-protection Kriwan INT 69 internal 24 V	2830367	1	1	1	1	1	1	1	1	1	1	1	1	1	1	1	1	1	1	1	1	1	1	1	1	1	
300	Module for VW-protection Kriwan INT 69 internal 110 V	2830130	1	1	1	1	1	1	1	1	1	1	1	1	1	1	1	1	1	1	1	1	1	1	1	1	1	
300	Module for VW-protection Kriwan INT 69 internal 220 V	2914552	1	1	1	1	1	1	1	1	1	1	1	1	1	1	1	1	1	1	1	1	1	1	1	1	1	
300	Module for VW-protection Kriwan INT 69 internal 200-260 V	2940962	1	1	1	1	1	1	1	1	1	1	1	1	1	1	1	1	1	1	1	1	1	1	1	1	1	
300	Module for VW-protection Kriwan INT 69 external 110 V	2495951	1	1	1	1	1	1	1	1	1	1	1	1	1	1	1	1	1	1	1	1	1	1	1	1	1	
300	Module for VW-protection Kriwan INT 69 external 220 V	2047625	1	1	1	1	1	1	1	1	1	1	1	1	1	1	1	1	1	1	1	1	1	1	1	1	1	
300	Module for VW-protection Kriwan INT 69 external 380 V	2640897	1	1	1	1	1	1	1	1	1	1	1	1	1	1	1	1	1	1	1	1	1	1	1	1	1	
310	Terminal board assy for model version w/o 2 only, e.g. DNRA-500	2950327	1	1	1	1	1	1	1	1	1																	
310	Terminal board assy for model version with 2 only, e.g. DNRA2-500	2939866	1	1	1	1	1	1	1	1	1																	
310	Terminal board assy	2939866										1	1	1	1	1	1	1	1	1	1	1	1	1	1	1	1	
340	Terminal box only model version w/o 2 e.g. DNRA-500	6706975	1	1	1	1	1	1	1	1	1																	
340	Terminal box only model version 2 e.g. DNRA2-500	2961207	1	1	1	1	1	1	1	1	1																	
340	Terminal box	2938250										1	1	1	1	1	1	1	1	1	1	1	1	1	1	1	1	
341	Gasket for terminal box only model version w/o 2 e.g. DNRA-500	6707718	1	1	1	1	1	1	1	1	1																	
341	Gasket for terminal box only model version 2 e.g. DNRA2-500	2938385	1	1	1	1	1	1	1	1	1																	
341	Gasket for terminal box	2938385										1	1	1	1	1	1	1	1	1	1	1	1	1	1	1	1	
343	Cover for terminal box, blank w/o wiring diagram only model version w/o 2 e.g. DNRA-500	6706986	1	1	1	1	1	1	1	1	1																	
343	Cover for terminal box Motor EW_, TWY_ only model version 2 e.g. DNRA2-500	2945490	1	1	1	1	1	1	1	1	1																	
343	Cover for terminal box Motor EW_, TW_	2945490										1	1	1	1	1	1	1	1	1	1	1	1	1	1	1	1	
343	Cover for terminal box Motor AW_	2945503										1	1	1	1	1	1	1	1	1	1	1	1	1	1	1	1	
402	Gasket for manifold	2963043																							2	2	2	2
403	Suction screen with gasket, interstage pressure	3806774																							1	1	1	1
405	Muffler plate 6 holes, discharge side	2474138																							1	1	1	1
406	Solenoid valve 24 V, DC ALCO CONTROLS	2998687																							1	1	1	1
406	Solenoid valve 24 V, 50/60 Hz ALCO CONTROLS	2998698																							1	1	1	1
406	Solenoid valve 120 V, 50/60 Hz ALCO CONTROLS	2998701																							1	1	1	1
406	Solenoid valve 230 V, 50/60 Hz ALCO CONTROLS	2998712																							1	1	1	1
407	Screen for liquid injection	2051015																							1	1	1	1
408	Sight glass for liquid injection	2991039																							1	1	1	1
409	Expansion valve Sporlan NIV-2-Z, 32 psig	2502433																							1	1		
409	Expansion valve Sporlan NIV-3-Z, 37 psig	2051004																									1	
409	Expansion valve Sporlan NIV-3-Z, 32 psig	2502455																										1

Diagram No.	Description	Part No.	Compressors marked with a "X" in the model name, e.g. D9TH*-101X, are charged with ester oil and have the same parts as the standard compressors																									
			DNRA* - 300	DNRB* - 400	DNRA* - 500	DNHB* - 253	DNHA* - 303	DNHM* - 373	DNHB* - 403	DNHA* - 503	DNHM* - 603	DMRH* - 500	DMRH* - 500L	DMRH* - 750	D9RA* - 500L	D9RC* - 500L	D9RA* - 750	D9RC* - 750	D9RC* - 750L	D9RC* - 1000	D9RS* - 1000	D9RS* - 1000L	D9RS* - 1500	D9TK* - 0760	D9TL* - 0760	D9TH* - 0760	D9TH* - 1010	
550	Unloaded start w/o check valve with solenoid coil 220 V, 50/60 Hz Danfoss	2831586																										
550	Unloaded start w/o check valve with solenoid coil 24 V, DC Danfoss	2990230																										
550	Unloaded start w/o check valve with solenoid coil 24 V, 50 Hz Danfoss	2990138																										
550	Unloaded start w/o check valve with solenoid coil 110 V, 50/60 Hz Danfoss	2990036																										
550	Unloaded start w/o check valve with solenoid coil 220 V, 50/60 Hz Danfoss	2831575																										
550/560	Unloaded start with capacity control complete 220 V, 50/60 Hz ALCO CONTROLS/Danfoss	2993819																										
550/560	Unloaded start with capacity control complete 220 V, 50/60 Hz ALCO CONTROLS/Danfoss	2993820																										
550/560	Unloaded start with capacity control complete 220 V, 50/60 Hz ALCO CONTROLS/Danfoss	2993831																										
552	Unloaded start (piping assy) w/o solenoid coil, w/o gaskets Danfoss	2943950																										
552	Unloaded start (piping assy) w/o solenoid coil, w/o gaskets Danfoss	2523869																										
553	Solenoid coil for unloaded start 24 V, DC Danfoss	2943949																										
553	Solenoid coil for unloaded start 24 V, DC Danfoss	2940268																										
553	Solenoid coil for unloaded start 24 V, 50 Hz Danfoss	2940257																										
553	Solenoid coil for unloaded start 110 V, 50/60 Hz Danfoss	2940246																										
553	Solenoid coil for unloaded start 220 V, 50/60 Hz Danfoss	2940235																										
554	Gasket for flange, suction side	2949812																										
554	Gasket for flange, suction side	2959880																										
555	Gasket for flange, discharge side (1 piece)	2963043																										
556	Bolt 5/16"-18 UNC x 2" 12.9 (1 piece)	2486500																										
556	Bolt 1/2"-13 UNC x 3" 8.8 (1 piece)	3058086																										
557	Check valve 22 mm NRV 22 S	2946891																										
557	Check valve with strong spring for Tandem-compressors and parallel systems 22 mm NRVH 22 S	2952243																										
557	Check valve 28 mm NRV 22 S	2995906																										
557	Check valve with strong spring for Tandem-compressors and parallel systems 28 mm NRVH 22 S	2995600																										
560	Capacity control (conversion kit) external 35 % reduction 220 V, 50/60 Hz ALCO CONTROLS	2831962																										

Diagram No.	Description	Part No.	Compressors marked with a "X" in the model name, e.g. D9TH*-101X, are charged with ester oil and have the same parts as the standard compressors																									
			DNRA* - 300	DNRB* - 400	DNRA* - 500	DNHB* - 253	DNHA* - 303	DNHM* - 373	DNHB* - 403	DNHA* - 503	DNHM* - 603	DMRH* - 500	DMRH* - 500L	DMRH* - 750	D9RA* - 500L	D9RC* - 500L	D9RA* - 750	D9RC* - 750	D9RC* - 750L	D9RC* - 1000	D9RS* - 1000	D9RS* - 1000L	D9RS* - 1500	D9TK* - 0760	D9TL* - 0760	D9TH* - 0760	D9TH* - 1010	
560	Capacity control (conversion kit) external 35 % reduction 220 V, 50/60 Hz ALCO CONTROLS	2831973																			1	1	1					
564	Gasket below cylinder head, capacity control	2950521												1	1	1	1	1	1									
564	Gasket below cylinder head, capacity control	2950532																				1	1	1				
566	Muffler plate 6 holes, discharge side	2474138												1	1	1	1	1	1	1	1	1	1					
568	Gasket for discharge side and control valve (1 piece)	2963043												4	4	4	4	4	4	4	4	4	4					
569	Gasket for flange, suction side	2959880												1	1	1	1	1	1	1	1	1	1					
570	Bolt 1/2"-13 UNC x 1 3/8" 8.8 (1 piece)	2486033												2	2	2	2	2	2	2	2	2	2					
571	Bolt 1/2"-13 UNC x 3" 8.8 (1 piece)	3058086												2	2	2	2	2	2	2	2	2	2					
572	Solenoid coil for capacity control 24 V, DC ALCO CONTROLS	2948911												1	1	1	1	1	1	1	1	1	1					
572	Solenoid coil for capacity control 24 V, 50/60 Hz ALCO CONTROLS	2941954												1	1	1	1	1	1	1	1	1	1					
572	Solenoid coil for capacity control 120 V, 50/60 Hz ALCO CONTROLS	2941943												1	1	1	1	1	1	1	1	1	1					
572	Solenoid coil for capacity control 220 V, 50/60 Hz ALCO CONTROLS	2940939												1	1	1	1	1	1	1	1	1	1					
580	Pipe socket not for model version 2 e.g. DNRA-500 (1 piece)	2304560	2	2	2	2	2	2	2	2																		
580	Flange sweat for model version 2 only, e.g. DNRA2-500 (1 piece)	2496330	2	2	2	2	2	2	2	2																		
580	Flange sweat (1 piece)	2496330											2	2	2	2	2	2	2	2	2	2	2	2	2	2	2	
581	Gasket for pipe socket not for model version 2 e.g. DNRA2-500 (1 piece)	2043292	2	2	2	2	2	2	2	2																		
581	Gasket for flange sweat for model version 2 only, e.g. DNRA2-500 (1 piece)	2042028	2	2	2	2	2	2	2	2																		
581	Gasket for flange sweat (1 piece)	2042028											2	2	2	2	2	2	2	2	2	2	2	2	2	2	2	
582	Gasket for pipe socket not for model version 2 e.g. DNRA2-500 (1 piece)	2912330	2	2	2	2	2	2	2	2																		
583	Vibration absorber not for model version 2 e.g. DNRA2-500	2040077	1	1	1	1	1	1	1	1																		
583	Vibration absorber for model version 2 only, e.g. DNRA2-500	2040099	1	1	1	1	1	1	1	1																		
583	Vibration absorber	2040099											1	1	1	1	1	1	1	1	1	1	1	1	1	1	1	
584	Oil sight glass SL 18 not for model version 2, e.g. DNRA2-500	2341258	1	1	1	1	1	1	1	1																		
584	Oil sight glass SLG 28 for model version 2 only, e.g. DNRA2-500	2495882	1	1	1	1	1	1	1	1																		
584	Oil sight glass SLG 28	2495882											1	1	1	1	1	1	1	1	1	1	1	1	1	1	1	
585	Insert socket 1/4"-18 NPTF (1 piece)	2063909	2	2	2	2	2	2	2	2			2	2	2	2	2	2	2	2	2	2	2	2	2	2	2	
586	Cap nut (1 piece)	2038456	2	2	2	2	2	2	2	2			2	2	2	2	2	2	2	2	2	2	2	2	2	2	2	

Diagram No.	Description	Part No.	DNRA* - 300	DNRB* - 400	DNRA* - 500	DNHB* - 253	DNHA* - 303	DNHM* - 373	DNHB* - 403	DNHA* - 503	DNHM* - 603	DMRH* - 500	DMRH* - 500L	DMRH* - 750	D9RA* - 500L	D9RC* - 500L	D9RA* - 750	D9RC* - 750	D9RC* - 750L	D9RC* - 1000	D9RS* - 1000	D9RS* - 1000L	D9RS* - 1500	D9TK* - 0760	D9TL* - 0760	D9TH* - 0760	D9TH* - 1010	
	Compressors marked with a "X" in the model name, e.g. D9TH*-101X, are charged with ester oil and have the same parts as the standard compressors																											
587	Nut for oil sight glass, not for model version 2, e.g. DNRA2-500 (1 piece)	2240720	2	2	2	2	2	2	2	2	2																	
	Oil and gas equalization line for 1 compressor, not for model version 2 e.g. DNRA2-500 (pipe socket, gaskets, retainer, insert socket, cap nut)	3106963	1	1	1	1	1	1	1	1	1																	
	Oil and gas equalization line for 1 compressor, for model version 2 e.g. DNRA2-500 (flange sweat, gasket, insert socket, cap nut)	3106952	1	1	1	1	1	1	1	1	1																	
	Oil and gas equalization line for 1 compressor (flange sweat, gasket, insert socket, cap nut)	3106952										1	1	1	1	1	1	1	1	1	1	1	1	1	1	1	1	1
	Oil regulation system, complete, ALCO OMA TraxOil, not for model version 2 e.g. DNRA2-500	8526708	1	1	1	1	1	1	1	1	1																	
	Oil regulation system, complete, ALCO OMA TraxOil, for model version 2 e.g. DNRA2-500	8526719	1	1	1	1	1	1	1	1	1																	
	Oil regulating systems, complete, ALCO OMA TraxOil	8526719										1	1	1	1	1	1	1	1	1	1	1	1	1	1	1	1	1
	Transformer for oil regulating system ALCO OMA TraxOil	8527518	1	1	1	1	1	1	1	1	1	1	1	1	1	1	1	1	1	1	1	1	1	1	1	1	1	1
590	Oil pressure safety switch with bracket and 2 capillary tubes ALCO CONTROLS	2834007	1	1	1	1	1	1	1	1	1	1	1	1	1	1	1	1	1	1	1	1	1					
590	Oil pressure safety switch with bracket and 2 capillary tubes	2991619																							1	1	1	1
590	Oil pressure safety switch with bracket and 2 capillary tubes for models with capacity control or unloaded start ALCO	2834041										1	1	1	1	1	1	1	1	1	1	1	1					
590	Oil pressure safety switch with bracket SENTRONIC	2952221	1	1	1	1	1	1	1	1	1	1	1	1	1	1	1	1	1	1	1	1	1	1	1	1	1	1
591	Oil pressure safety switch, w/o bracket, w/o capillary tubes ALCO CONTROLS	2966622	1	1	1	1	1	1	1	1	1	1	1	1	1	1	1	1	1	1	1	1	1	1	1	1	1	1
591	Oil pressure safety switch, w/o bracket, w/o sensor, SENTRONIC (Caution! Obsolete and new SENTRONIC parts, e.g. obsolete module with new sensor, must not be used commonly)	2951853	1	1	1	1	1	1	1	1	1	1	1	1	1	1	1	1	1	1	1	1	1	1	1	1	1	1
591	Oil pressure safety switch, w/o bracket, w/o sensor, SENTRONIC+ NEW (Caution! Obsolete and new SENTRONIC parts, e.g. obsolete module with new sensor, must not be used commonly)	3107013	1	1	1	1	1	1	1	1	1	1	1	1	1	1	1	1	1	1	1	1	1	1	1	1	1	1
591/593	Oil pressure safety switch with flare connection, 2 capillary tubes, w/o bracket ALCO CONTROLS	2942300	1	1	1	1	1	1	1	1	1	1	1	1	1	1	1	1	1	1	1	1	1	1	1	1	1	1
592	Bracket for oil pressure safety switch ALCO CONTROLS/Ranco	2326626	1	1	1	1	1	1	1	1	1	1	1	1	1	1	1	1	1	1	1	1	1					
592	Bracket for oil pressure safety switch for models with capacity control or unloaded start ALCO CONTROLS/Ranco	2940008										1	1	1	1	1	1	1	1	1	1	1	1					

Diagram No.	Description	Part No.	DNRA* - 300	DNRB* - 400	DNRA* - 500	DNHB* - 253	DNHA* - 303	DNHM* - 373	DNHB* - 403	DNHA* - 503	DNHM* - 603	DMRH* - 500	DMRH* - 500L	DMRH* - 750	D9RA* - 500L	D9RC* - 500L	D9RA* - 750	D9RC* - 750	D9RC* - 750L	D9RC* - 1000	D9RS* - 1000	D9RS* - 1000L	D9RS* - 1500	D9TK* - 0760	D9TL* - 0760	D9TH* - 0760	D9TH* - 1010	
	Compressors marked with a "X" in the model name, e.g. D9TH*-101X, are charged with ester oil and have the same parts as the standard compressors																											
592	Bracket for oil pressure safety switch ALCO CONTROLS/Ranco	2975879																							1	1	1	1
592	Bracket for oil pressure safety switch SENTRONIC	2951864	1	1	1	1	1	1	1	1	1	1	1	1	1	1	1	1	1	1	1	1	1	1	1	1	1	1
593	Capillary tube for oil pressure safety switch with gaskets, Cu-ring ALCO CONTROLS/Ranco (1 piece)	3808214	2	2	2	2	2	2	2	2	2	2	2	2	2	2	2	2	2	2	2	2	2	2	2	2	2	2
594	Gasket, Cu-ring ALCO CONTROLS/Ranco (1 piece)	2974343	4	4	4	4	4	4	4	4	4	4	4	4	4	4	4	4	4	4	4	4	4	4	4	4	4	4
	Sensor with gaskets SENTRONIC (Caution! Obsolete and new SENTRONIC parts, e.g. obsolete module with new sensor, must not be used commonly)	3807460	1	1	1	1	1	1	1	1	1	1	1	1	1	1	1	1	1	1	1	1	1	1	1	1	1	1
	Sensor with gaskets SENTRONIC+ NEW (Caution! Obsolete and new SENTRONIC parts, e.g. obsolete module with new sensor, must not be used commonly)	3107046	1	1	1	1	1	1	1	1	1	1	1	1	1	1	1	1	1	1	1	1	1	1	1	1	1	1
	Gasket, O-ring for sensor SENTRONIC	2944124	1	1	1	1	1	1	1	1	1	1	1	1	1	1	1	1	1	1	1	1	1	1	1	1	1	1
	Gasket, circular for sensor SENTRONIC	2951831	1	1	1	1	1	1	1	1	1	1	1	1	1	1	1	1	1	1	1	1	1	1	1	1	1	1
	Extension cable 3 m SENTRONIC (Caution! Obsolete and new SENTRONIC parts, e.g. obsolete module with new sensor, must not be used commonly)	3808087	1	1	1	1	1	1	1	1	1	1	1	1	1	1	1	1	1	1	1	1	1	1	1	1	1	1
	Extension cable 3 m SENTRONIC+ NEW (Caution! Obsolete and new SENTRONIC parts, e.g. obsolete module with new sensor, must not be used commonly)	3107035	1	1	1	1	1	1	1	1	1	1	1	1	1	1	1	1	1	1	1	1	1	1	1	1	1	1
600	Additional fan assy, vertical 220-1-50/60 EBM	3098842	1	1	1							1	1	1														
600	Additional fan assy, vertical 220-1-50/60 EBM	2987467				1	1	1	1	1	1																	
600	Additional fan assy, vertical 220-1-50/60 EBM	2987434													1	1	1	1	1	1	1	1	1					
600	Additional fan assy, vertical for models with capacity control 220-1-50 /60 EBM	2987401													1	1	1	1	1	1	1	1	1					
600	Additional fan assy, vertical 220/380-3-50/60 EBM	3098831	1	1	1							1	1	1														
600	Additional fan assy, vertical 220/380-3-50/60 EBM	2987456				1	1	1	1	1	1																	
600	Additional fan assy, vertical 220/380-3-50/60 EBM	2987423													1	1	1	1	1	1	1	1	1					
600	Additional fan assy, vertical for models with capacity control 220/380-3-50/60 EBM	2987398													1	1	1	1	1	1	1	1	1					
600	Additional fan assy, vertical 500-3-50 EBM	3098853	1	1	1							1	1	1														
600	Additional fan assy, vertical 500-3-50 EBM	2987478				1	1	1	1	1	1																	
600	Additional fan assy, vertical 500-3-50 EBM	2987445													1	1	1	1	1	1	1	1	1					
600	Additional fan assy, vertical for models with capacity control 500-3-50 EBM	2987412													1	1	1	1	1	1	1	1	1					
601	Motor for additional fan 60 W, 220/380-3-50/60 (if motor 220-1-50, please order additionally run capacitor 6 µF 2728686)	2487456	1	1	1	1	1	1	1	1	1	1	1	1	1	1	1	1	1	1	1	1	1					

Diagram No.	Description	Part No.	DNRA* - 300	DNRB* - 400	DNRA* - 500	DNHB* - 253	DNHA* - 303	DNHM* - 373	DNHB* - 403	DNHA* - 503	DNHM* - 603	DMRH* - 500	DMRH* - 500L	DMRH* - 750	D9RA* - 500L	D9RC* - 500L	D9RA* - 750	D9RC* - 750	D9RC* - 750L	D9RC* - 1000	D9RS* - 1000	D9RS* - 1000L	D9RS* - 1500	D9TK* - 0760	D9TL* - 0760	D9TH* - 0760	D9TH* - 1010	
	Compressors marked with a "X" in the model name, e.g. D9TH*-101X, are charged with ester oil and have the same parts as the standard compressors																											
601/602/603	Additional fan assy, vertical 220-1-50/60 EBM w/o mounting kit	2986022	1	1	1	1	1	1	1	1	1	1	1	1	1	1	1	1	1	1	1	1	1					
601/602/603	Additional fan assy, vertical 220/380-3-50/60 EBM w/o mounting kit	2985972	1	1	1	1	1	1	1	1	1	1	1	1	1	1	1	1	1	1	1	1	1					
601/602/603	Additional fan assy, vertical 500-3-50 EBM w/o mounting kit	2986033	1	1	1	1	1	1	1	1	1	1	1	1	1	1	1	1	1	1	1	1	1					
	Run capacitor 6 µF for additional fan 50/55/60 W, 220-1-50	2728686	1	1	1	1	1	1	1	1	1	1	1	1	1	1	1	1	1	1	1	1	1					
	Run capacitor 5 µF for additional fan 220-1-50/60 EBM	3097996	1	1	1	1	1	1	1	1	1	1	1	1	1	1	1	1	1	1	1	1	1					
602	Fan blade for additional fan (4 blades) 60 W, ø 305 mm 33°	2728131	1	1	1	1	1	1	1	1	1	1	1	1	1	1	1	1	1	1	1	1	1					
602	Fan blade for additional fan for models with capacity control (4 blades) 60 W, ø 305 mm 33°	2943790														1	1	1	1	1	1	1	1					
603	Fan guard for additional fan 60 W - for a complete guard	2485836	1	1	1	1	1	1	1	1	1	1	1	1	1	1	1	1	1	1	1	1	1					
603	Fan guard for additional fan 60 W for models with capacity control for a complete guard please order additionally 2 x cover 2912909 and 4 x screw 2939684	2943803														1	1	1	1	1	1	1	1					
604	Cover for guard 60 W (1 piece)	2912909	2	2	2	2	2	2	2	2	2	2	2	2	2	2	2	2	2	2	2	2	2					
605	Bolt B 3,9 x 16 Z 2 DIN 7976 (1 piece)	2939684	4	4	4	4	4	4	4	4	4	4	4	4	4	4	4	4	4	4	4	4	4					
610	Mounting kit for additional fan 60 W (also DNH with high cylinder head)	2830414	1	1	1	1	1	1	1	1	1																	
610	Mounting kit for additional fan 60 W	2830390				1	1	1	1	1	1																	
610	Mounting kit for additional fan 60 W	2831111										1	1	1														
610	Mounting kit for additional fan 60 W	2830403													1	1	1	1	1	1	1	1	1					
610	Mounting kit for additional fan EBM (also DNH with high cylinder head)	2988119	1	1	1	1	1	1	1	1	1	1	1															
610	Mounting kit for additional fan EBM	2987536				1	1	1	1	1	1	1	1															
610	Mounting kit for additional fan EBM	2987525													1	1	1	1	1	1	1	1	1					
610	Mounting kit for additional fan for models with capacity control EBM	2987514													1	1	1	1	1	1	1	1	1					