

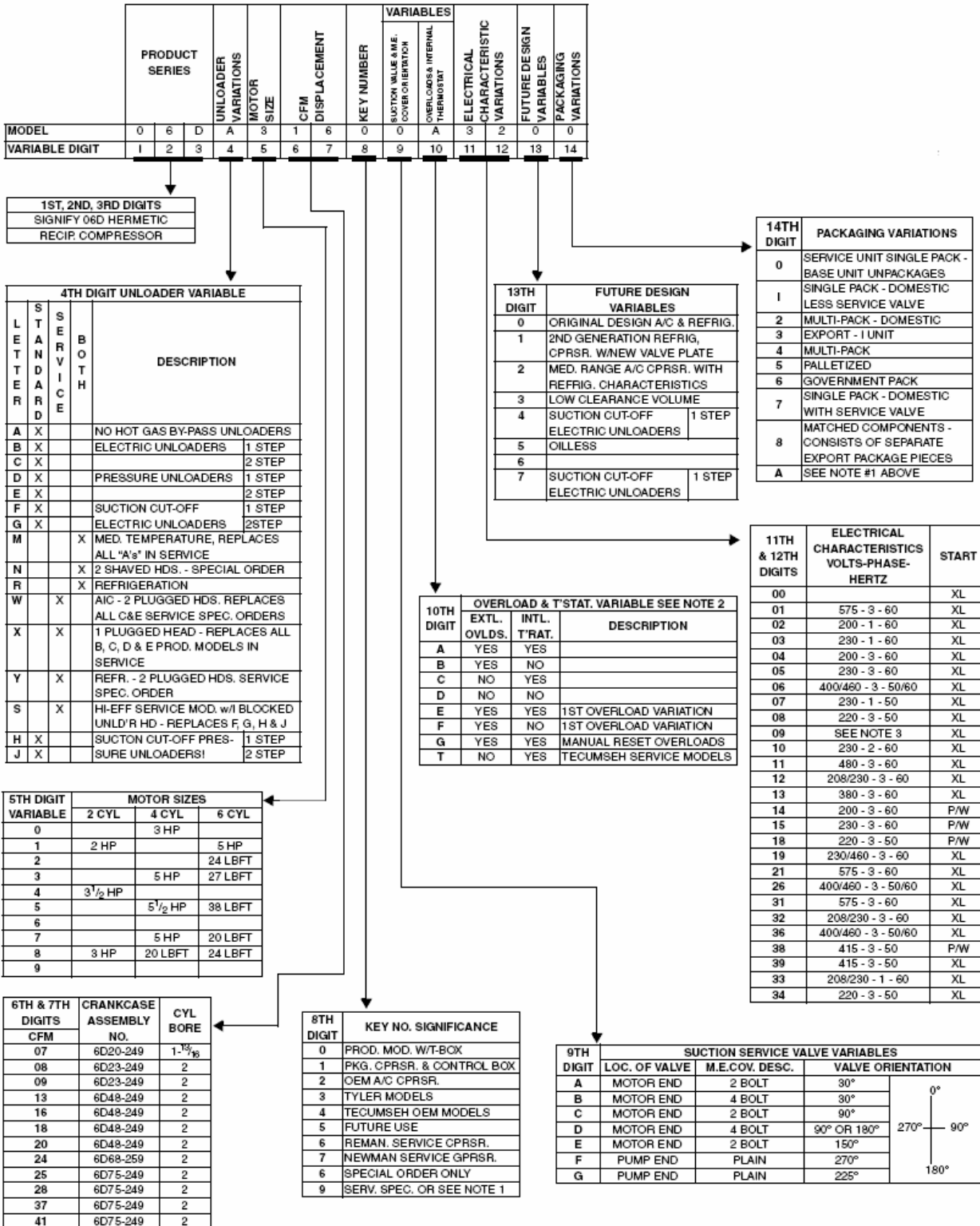
# CARLYLE SEMI-HERMETIC COMPRESSORS

## GUIDE TO 06D PART NUMBERING SYSTEM

Notes:

1. Models ending with "ARP" are intended for CCRP distributors. These models have one suction cut-off unloading head.
2. Service models with "C" in the 10th digit replace all "A", "C" and "E" original equipment models and "D" service models replace "8" & "F" models. Terminal boxes and overloads are to be re-used or replaced if damaged.
3. "09" in the 11th & 12th digits has been used in the past for 400-3-50 motors and is no longer used, so as to avoid confusion in service these digits are to be left on this chart but are not to be re-used

CARLYLE SEMI-HERMETIC COMPRESSORS

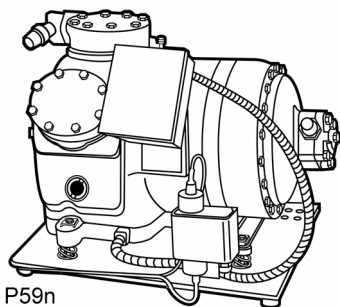


# CARLYLE SEMI-HERMETIC COMPRESSORS

CARLYLE SEMI-HERMETIC COMPRESSORS

## 06D

### MEDIUM AND HIGH TEMPERATURE COMPRESSOR APPLICATION DATA



For mounting configuration, dimensions and weight refer to outline drawings on following pages.

MODEL NO.	NOMINAL HP	NO. OF CYL.	CFM @ 1750 RPM	SUCTION TEMP. RANGE (F)	R-22	
					CAPACITY (MBTUH)	
					Air Cooled 45 SST 130 SCT 0° SC	Water Cooled 40 SST 105 SCT 0° SC
06DM808	3	2	8	0 to 50	36.5	39.9
06DM313	5	4	13	0 to 50	56.9	62.9
06DM316*	5	4	16	0 to 50	—	77.9
06D( )818	6.5	4	18	0 to 50	82.9	90.8
06D( )824	7.5	6	24	0 to 50	105.8	117.3
06D( )825	7.5	6	24	0 to 50	105.8	117.3
06D( )328	10	6	28	0 to 50	127.8	140.0
06D( )337*	10	6	37	0 to 50	—	185.6
06D( )537	15	6	37	0 to 50	175.2	190.3

\*These models are suitable for the suction range noted ONLY at the lower condensing temperature

### LOW TEMPERATURE COMPRESSOR APPLICATION DATA

MODEL NO. (SEE NOTE BELOW)	HP	NO. OF CYL.	CFM @ 1750 RPM	SUCTION TEMP. RANGE (F)		R-22		R-404A	
						CAPACITY (MBtuH)		CAPACITY (MBtuH)	
						AIR COOLED	SUBCOOLED	AIR COOLED	SUBCOOLED
						-25 SST 105 SCT 0 SC	-25 SST 105 SCT 55 SC	-25 SST 105 SCT 0 SC	-25 SST 105 SCT 55 SC
06DR109	2	2	8	0 to -35	0 to -40	7.6	9.4	9.5	13
06DR013	3	4	13	0 to -35	0 to -40	12.1	14.8	11.5	15.7
06DR316	5	4	16	0 to -35	0 to -40	15.2	18.6	17.3	23.6
06DR718	5	4	18	0 to -35	0 to -40	18.0	22.0	21.6	29.6
06DR820	6.5	4	20	0 to -35	0 to -40	21.3	26.0	23.7	32.4
06DR724	6.5	6	24	0 to -35	0 to -40	22.6	27.5	25.2	34.4
06DR725	6.5	6	24	0 to -35	0 to -40	22.6	27.5	25.2	34.4
06DR228	7.5	6	28	0 to -35	0 to -40	27.0	33.0	33.1	45.2
06DR337	10	6	37	0 to -35	0 to -40	36.6	44.8	44.4	60.7
06DR541	15	6	41	0 to -35	0 to -40	41.1	50.2	48.9	66.8

**NOTE:** Carlyle requires a head cooling fan and liquid injection for all low temperature, R-22 applications.

CFM = Cubic Feet Per Minute

SST = Saturated Suction Temperature

SCT = Saturated Condensing Temperature

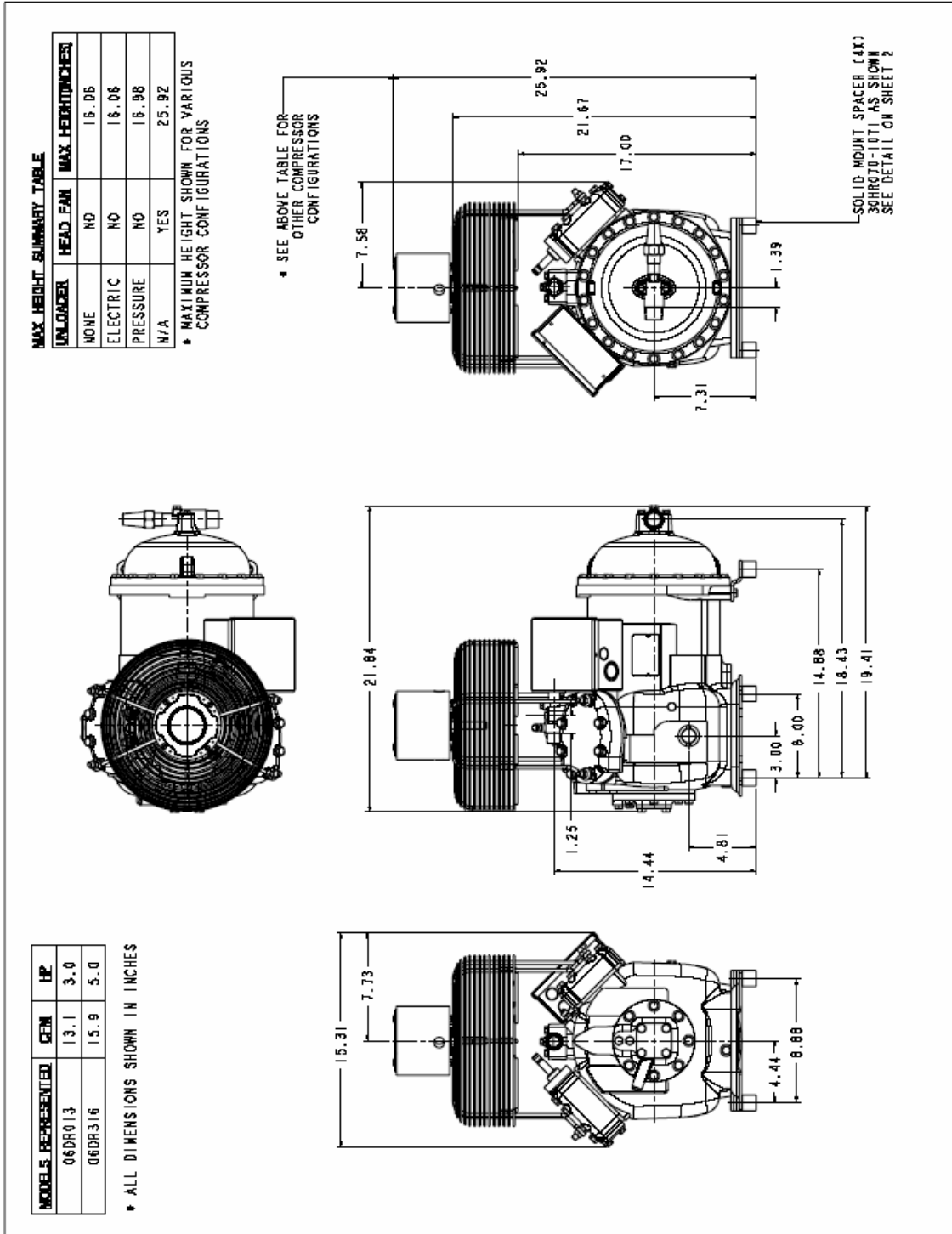
SC = Sub Cooling

# CARLYLE SEMI-HERMETIC COMPRESSORS

## 06D OUTLINE DRAWINGS

Note: Compressors shown with optional accessories - contact your distributor for details.

### 06D COMPRESSOR



# CARLYLE SEMI-HERMETIC COMPRESSORS

## 06D OUTLINE DRAWINGS

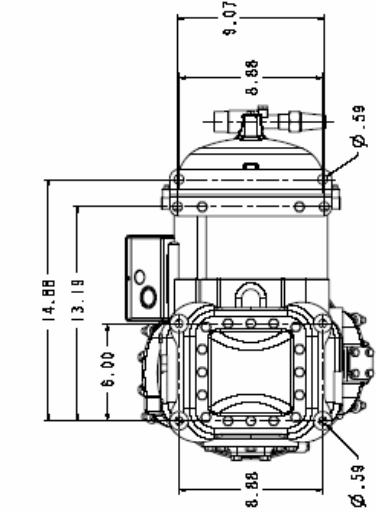
Note: Compressors shown with optional accessories - contact your distributor for details.

### 06D COMPRESSOR

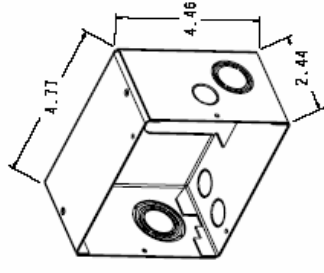
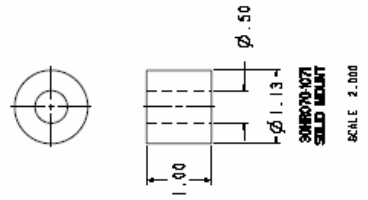
CARLYLE SEMI-HERMETIC COMPRESSORS

MODELS REPRESENTED	CFM	HP
06DR013	13.1	3.0
06DR316	15.9	5.0

\* ALL DIMENSIONS SHOWN IN INCHES



BOTTOM VIEW  
MOUNTING BOLT PATTERN



ELECTRICAL BOX RACKOUT  
SIZE COMBINATIONS

# CARLYLE SEMI-HERMETIC COMPRESSORS

## 06D OUTLINE DRAWINGS

Note: Compressors shown with optional accessories - contact your distributor for details.

### 06D COMPRESSOR

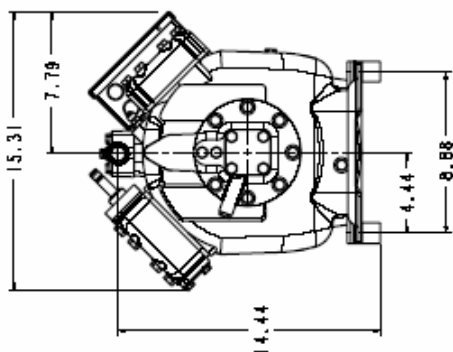
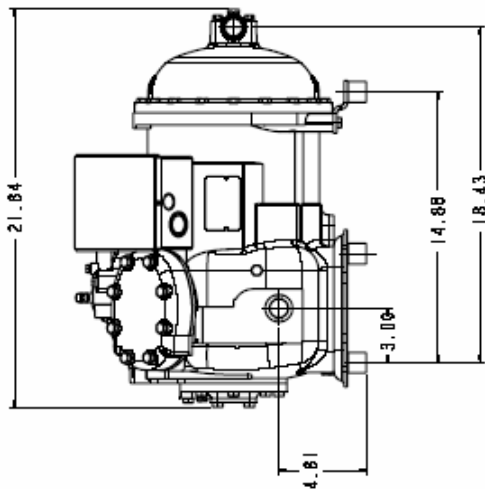
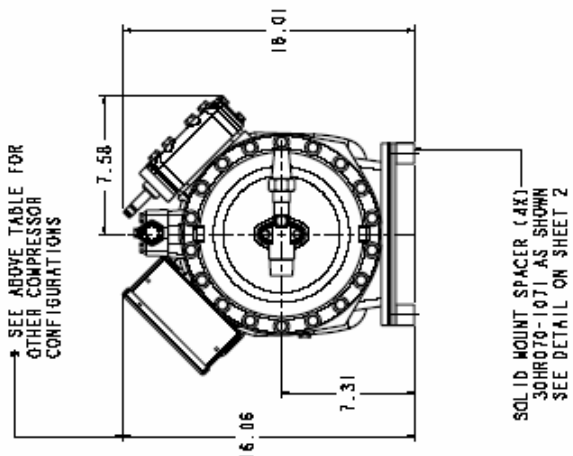
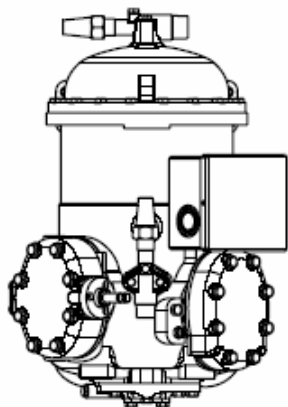
**MAX HEIGHT SUMMARY TABLE**

UNLOADER	HEAD FAN	MAX HEIGHT (INCHES)
NONE	NO	16.06
ELECTRIC	NO	16.06
PRESSURE	NO	16.98

\* MAXIMUM HEIGHT SHOWN FOR VARIOUS COMPRESSOR CONFIGURATIONS

MODELS REPRESENTED	CFM	HP
06DM313	13.1	5.0
06DM316	15.9	5.0

\* ALL DIMENSIONS SHOWN IN INCHES



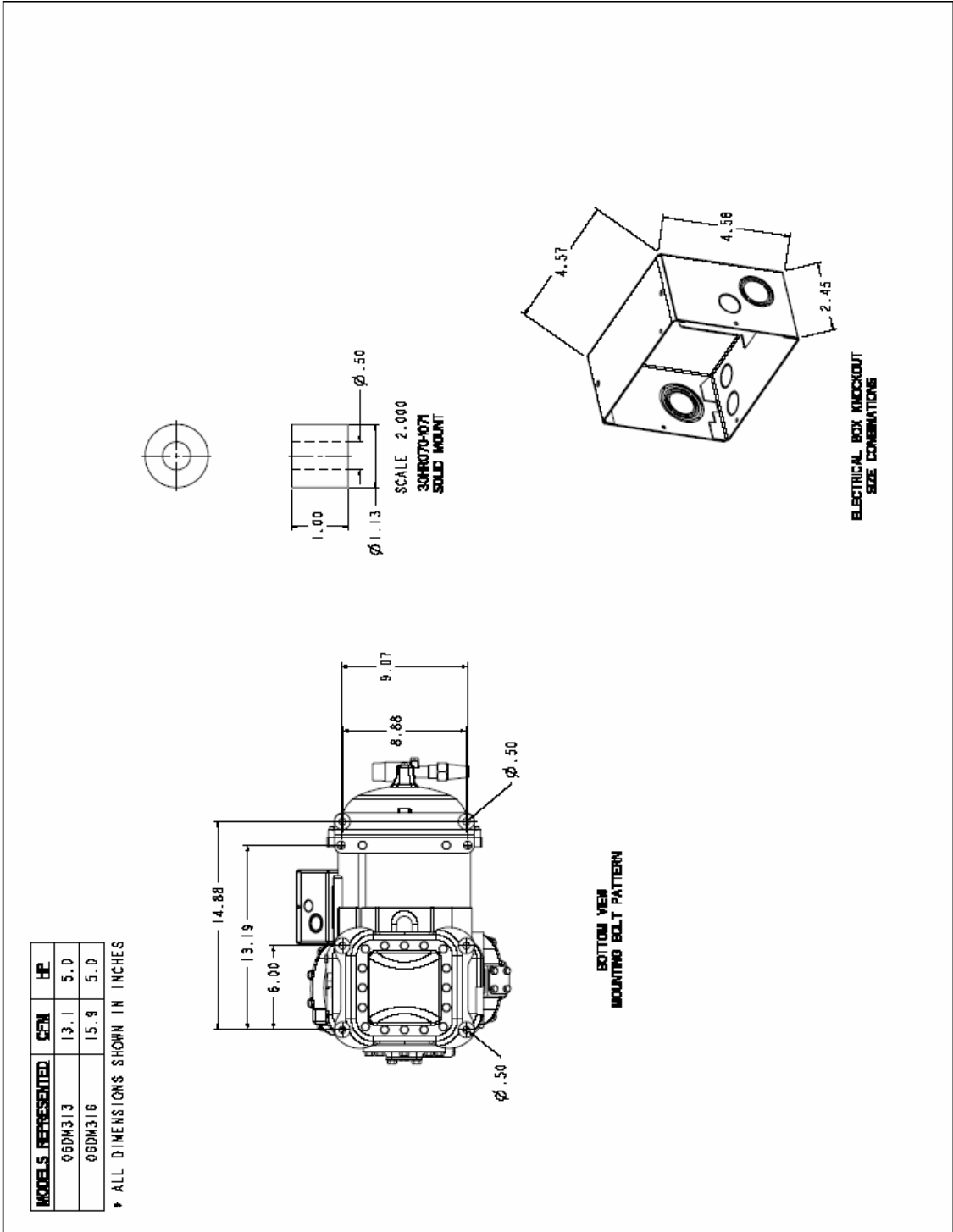
# CARLYLE SEMI-HERMETIC COMPRESSORS

## 06D OUTLINE DRAWINGS

Note: Compressors shown with optional accessories - contact your distributor for details.

### 06D Compressor

CARLYLE SEMI-HERMETIC COMPRESSORS

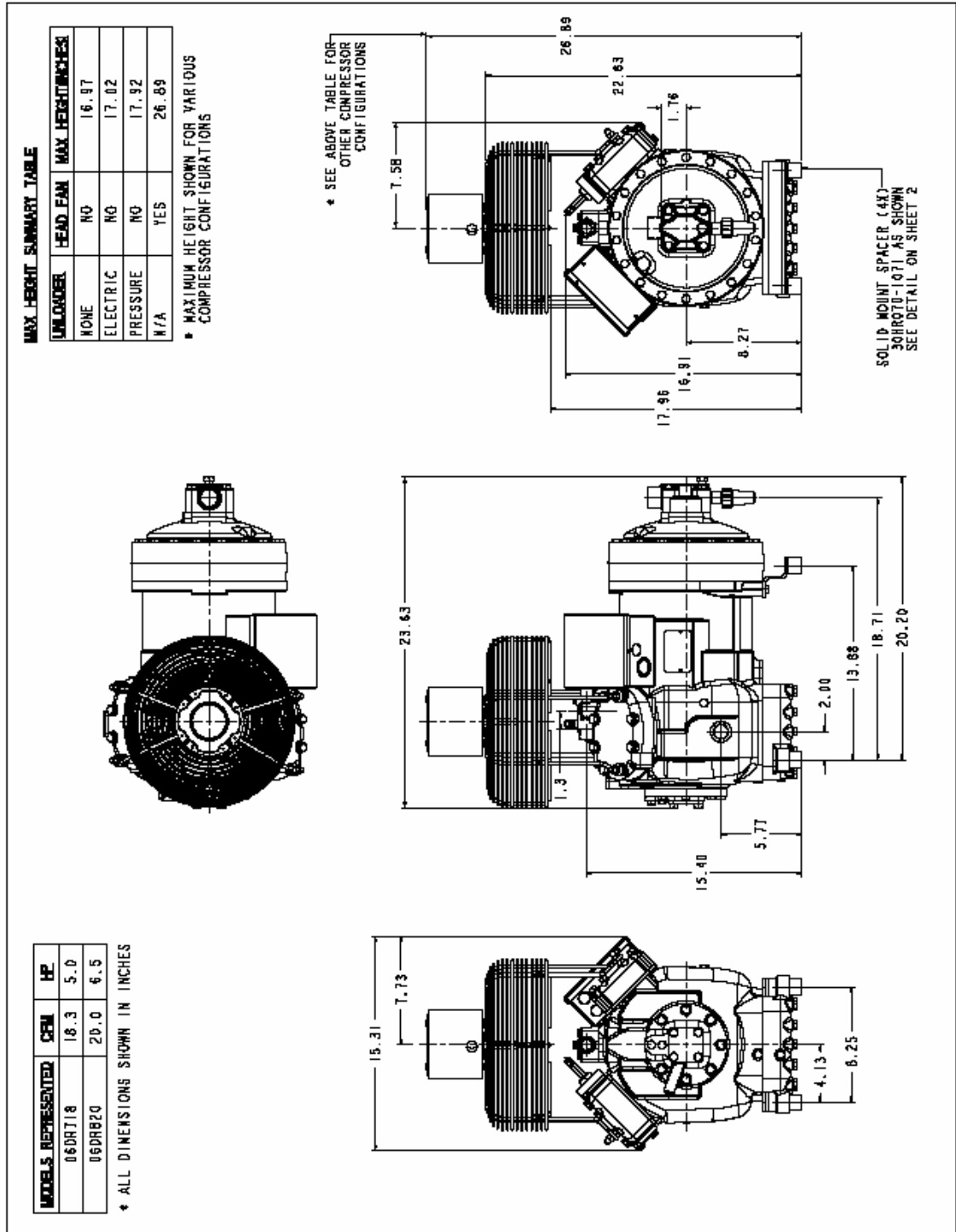


# CARLYLE SEMI-HERMETIC COMPRESSORS

## 06D OUTLINE DRAWINGS

Note: compressors shown with optional accessories - contact your distributor for details.

### 06D Compressor



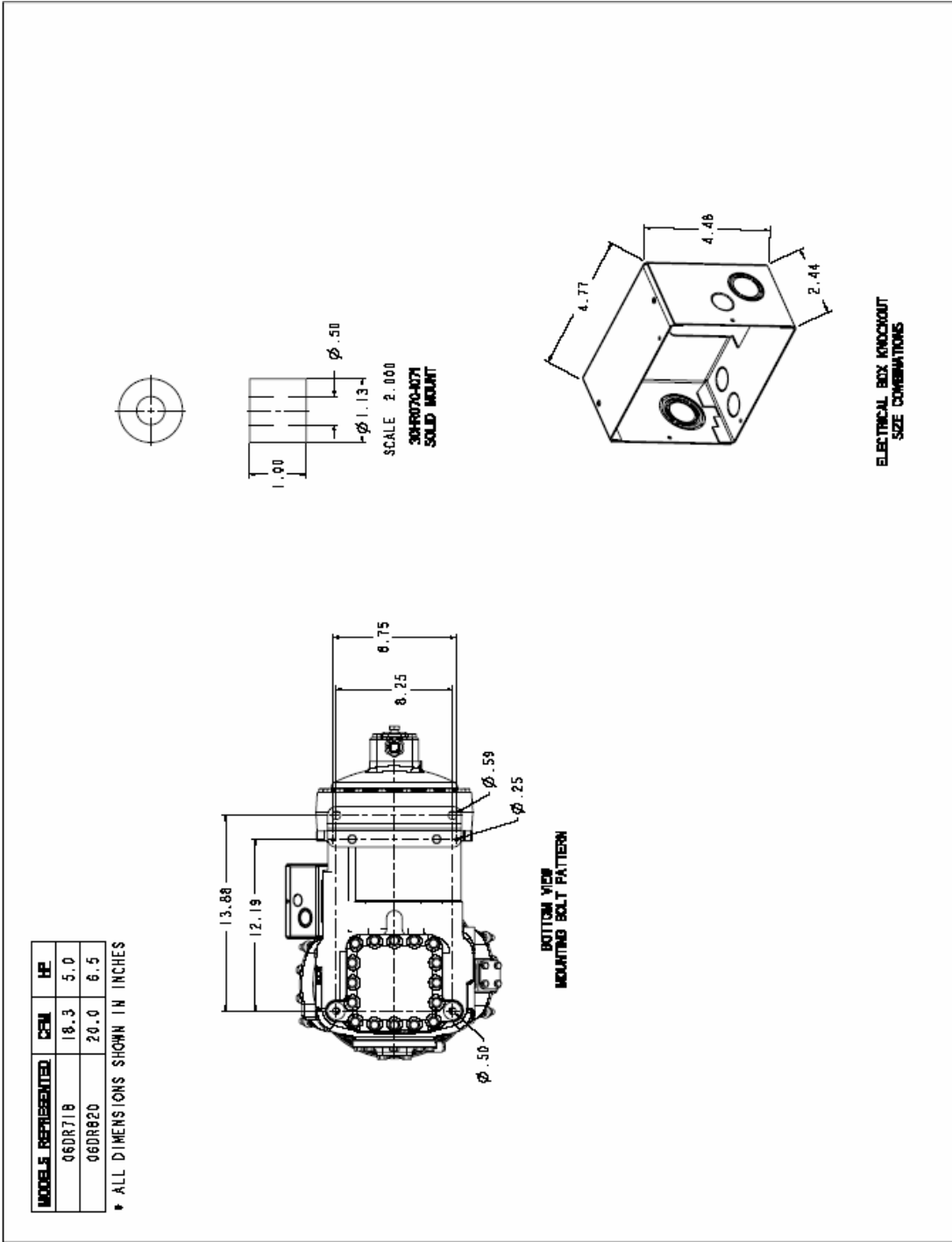
# CARLYLE SEMI-HERMETIC COMPRESSORS

CARLYLE SEMI-HERMETIC COMPRESSORS

## 06D OUTLINE DRAWINGS

Note: Compressors shown with optional accessories - contact your distributor for details.

### 06D COMPRESSOR

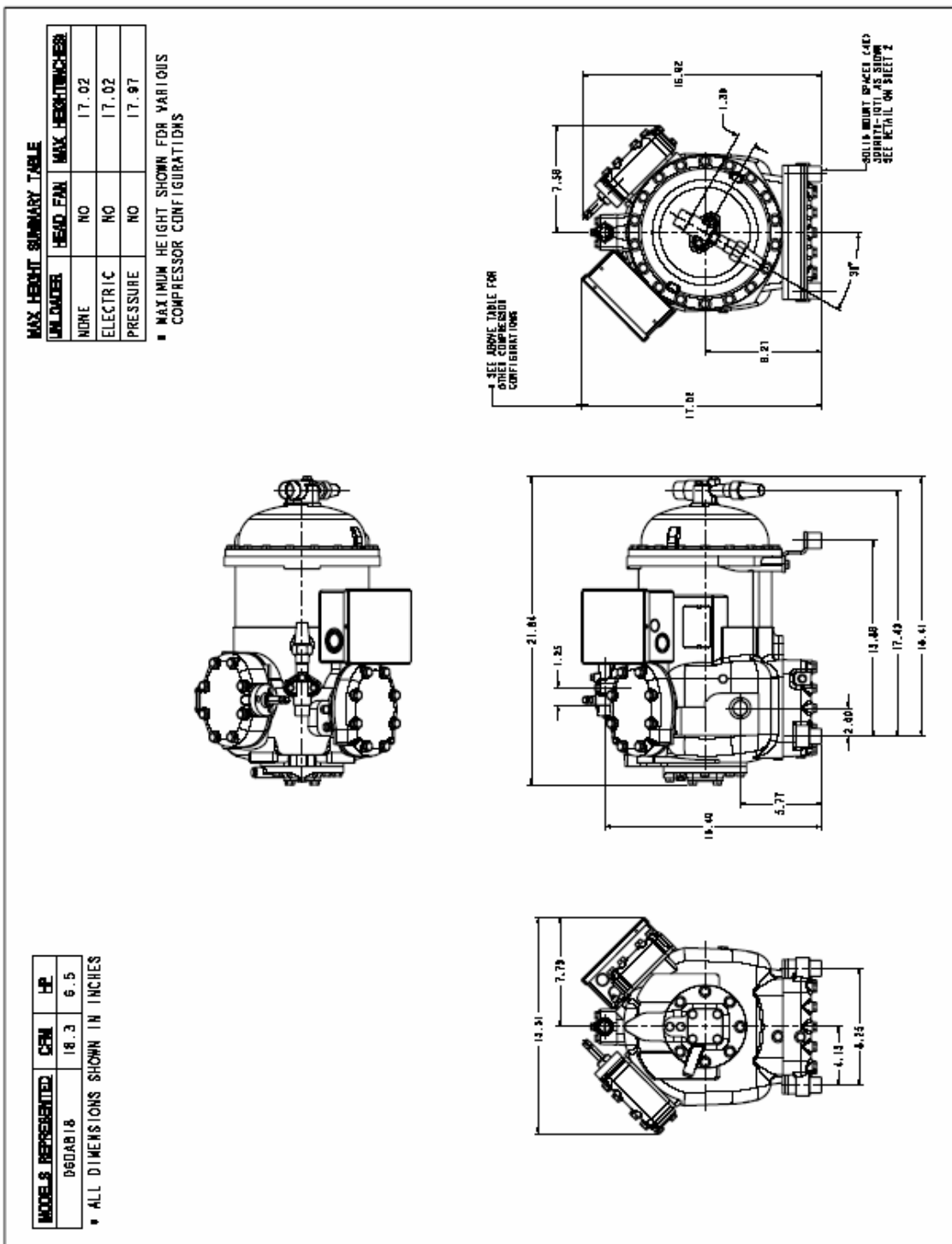


# CARLYLE SEMI-HERMETIC COMPRESSORS

## 06D OUTLINE DRAWINGS

Note: Compressors shown with optional accessories - contact your distributor for details.

### 06D COMPRESSOR



CARLYLE SEMI-HERMETIC COMPRESSORS

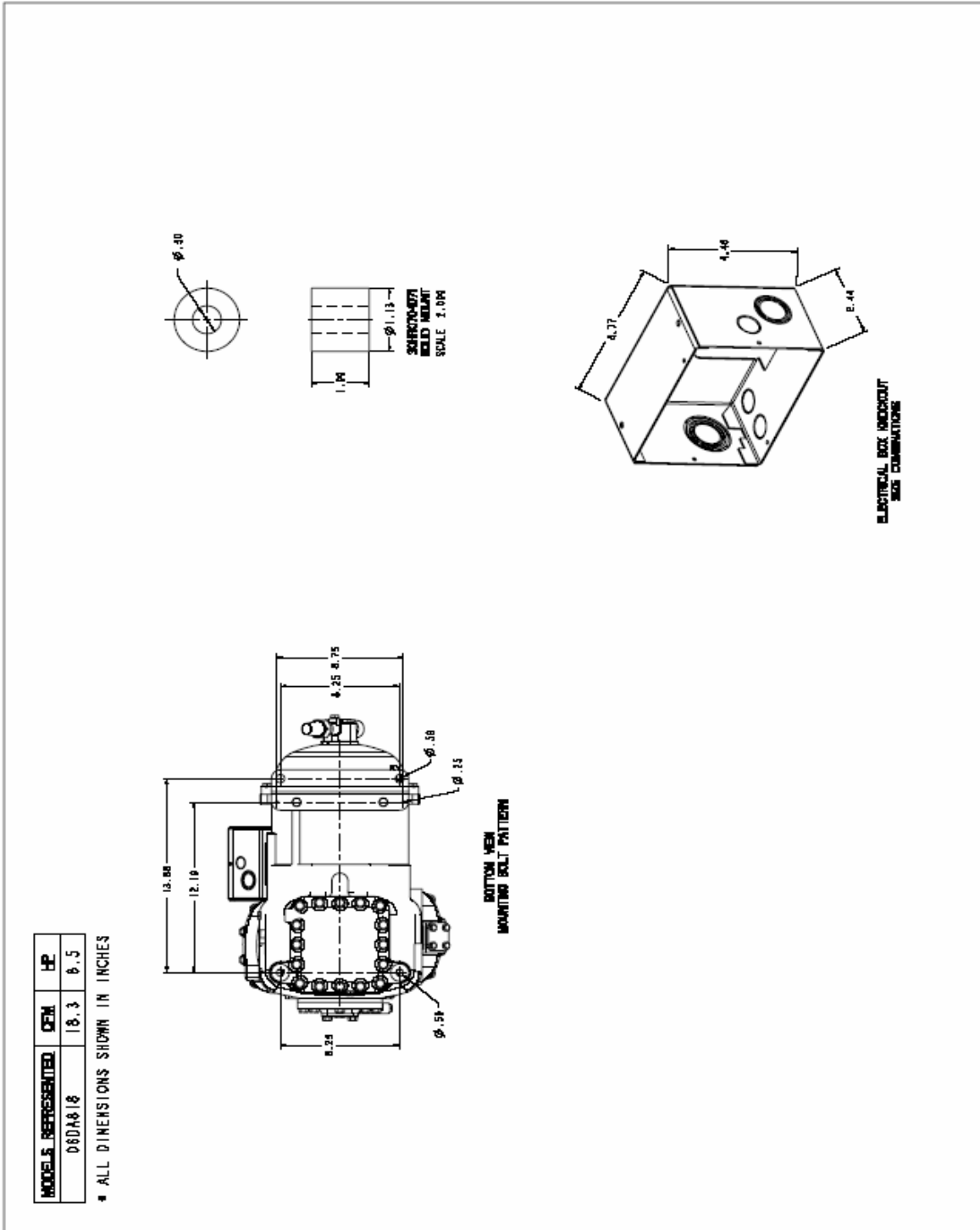
# CARLYLE SEMI-HERMETIC COMPRESSORS

## 06D OUTLINE DRAWINGS

Note: Compressors shown with optional accessories - contact your distributor for details.

### 06D COMPRESSOR

CARLYLE SEMI-HERMETIC COMPRESSORS

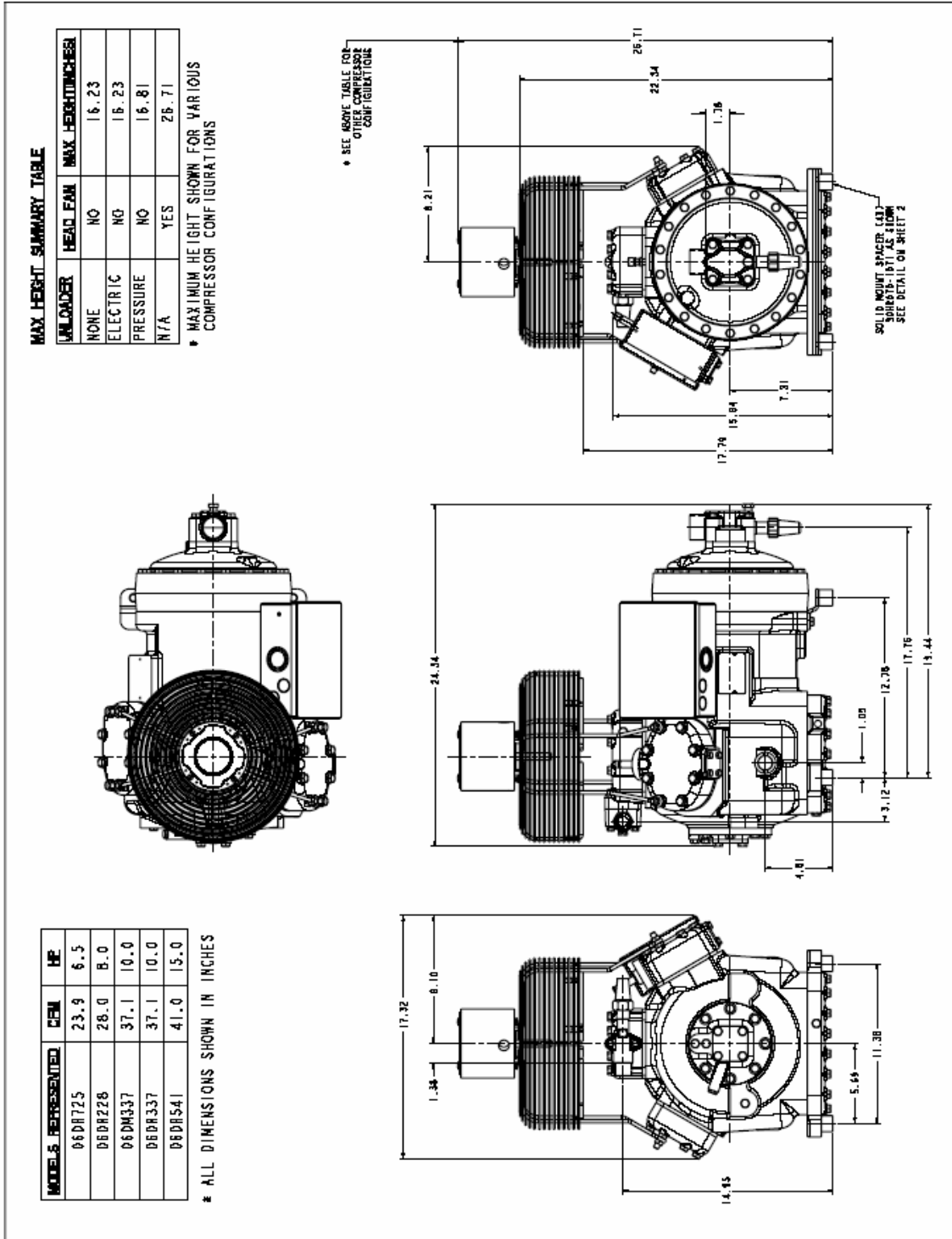


# CARLYLE SEMI-HERMETIC COMPRESSORS

## 06D OUTLINE DRAWINGS

Note: Compressors shown with optional accessories - contact your distributor for details.

### 06D COMPRESSOR



# CARLYLE SEMI-HERMETIC COMPRESSORS

## 06D OUTLINE DRAWINGS

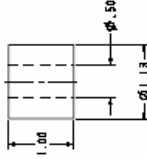
Note: Compressors shown with optional accessories - contact your distributor for details.

### 06D COMPRESSOR

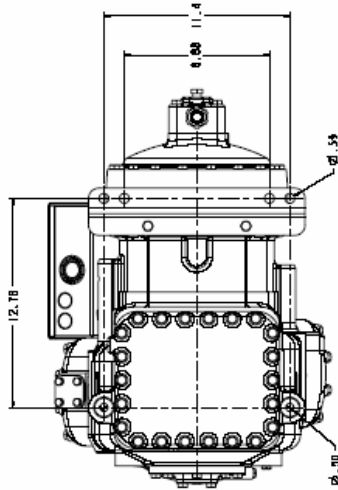
CARLYLE SEMI-HERMETIC COMPRESSORS

MODELS REPRESENTED	CEM	HP
06DR725	23.9	6.5
06DR228	26.0	8.0
06DM337	37.1	10.0
06DR337	37.1	10.0
06DR541	41.0	15.0

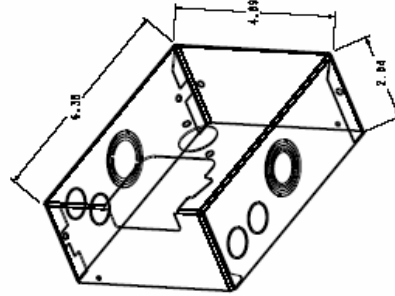
\* ALL DIMENSIONS SHOWN IN INCHES



SCALE 2:00P  
304870-1071  
SOLID MOUNT



BOTTOM VIEW  
MOUNTING BOLT PATTERN



ELECTRICAL BOX KNOCKOUT  
SIZE COMBINATIONS

# CARLYLE SEMI-HERMETIC COMPRESSORS

## 06D OUTLINE DRAWINGS

Note: Compressors shown with optional accessories - contact your distributor for details.

### 06D COMPRESSOR

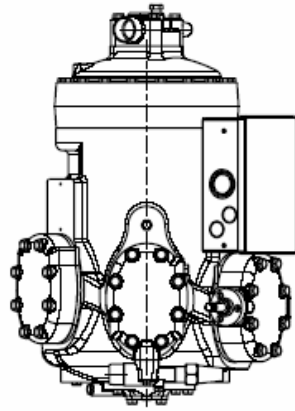
MAX HEIGHT SUMMARY TABLE

UNLOADER	HEAD FAN	MAX HEIGHT INCHES
NONE	NO	16.23
ELECTRIC	NO	15.23
PRESSURE	NO	16.81

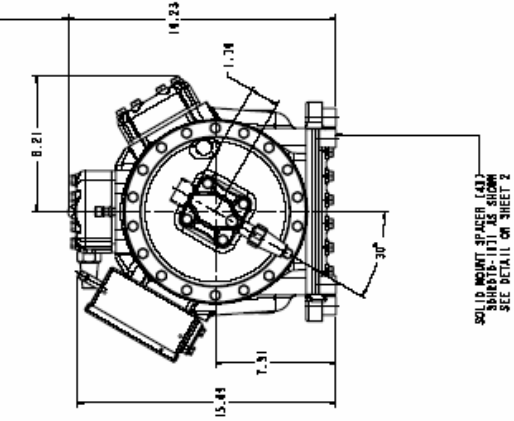
\* MAXIMUM HEIGHT SHOWN FOR VARIOUS COMPRESSOR CONFIGURATIONS

MODELS REPRESENTED	CFM	HP
06DA825	23.9	8.0
06DA328	28.0	10.0
06DA537	37.1	15.0

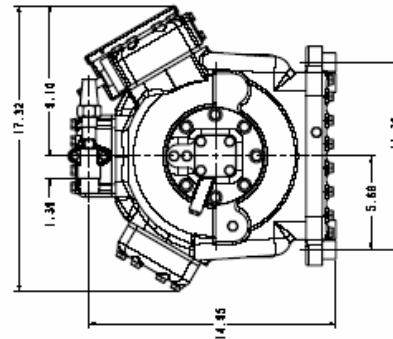
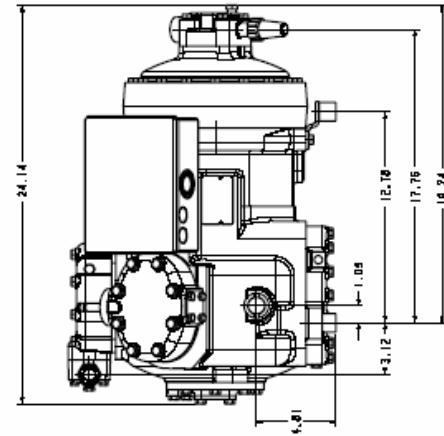
\* ALL DIMENSIONS SHOWN IN INCHES



\* SEE ABOVE TABLE FOR VARIOUS COMPRESSOR CONFIGURATIONS



SOLID MOUNT BRACER (AS SHOWN) SEE DETAIL ON SHEET 2



# CARLYLE SEMI-HERMETIC COMPRESSORS

## 06D OUTLINE DRAWINGS

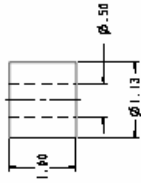
Note: Compressors shown with optional accessories - contact your distributor for details.

### 06D COMPRESSOR

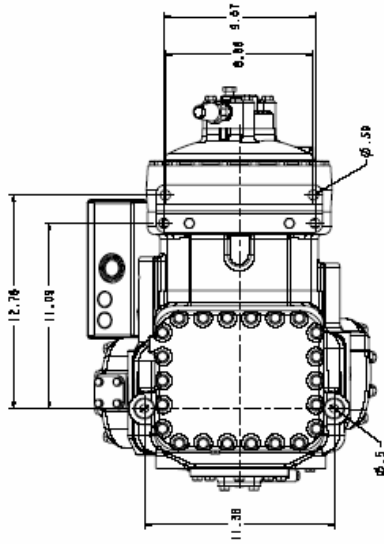
CARLYLE SEMI-HERMETIC COMPRESSORS

MODELS REPRESENTED	CFM	HP
06DA825	23.9	8.0
06DA328	28.0	10.0
06DA537	37.1	15.0

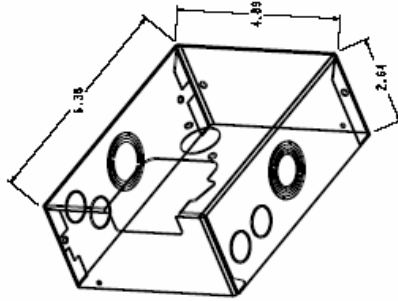
\* ALL DIMENSIONS SHOWN IN INCHES



SCALE 2:048  
PHOTOGRAPH  
SOLID MOUNT



BOTTOM VIEW  
MOUNTING FEET PATTERN



ELECTRICAL BOX KNOCKOUT  
SIZE CONSIDERATIONS

# CARLYLE SEMI-HERMETIC COMPRESSORS

## 06D COMPRESSOR DATA — SINGLE PHASE

### MEDIUM TEMPERATURE

#### 2 CYLINDER... AIR CONDITIONING & MEDIUM TEMPERATURE ... 60 HZ

COMPRESSOR MODEL NO	VOLT	HP	CFM	OIL CHG. PINTS	MAX			
					WATTS	RLA	MTA	LRA
06DM8086-3350	230	3	8	3.5	2800	20.0	28.0	110.0

#### 4 CYLINDER... AIR CONDITIONING & MEDIUM TEMPERATURE ... 60 HZ

COMPRESSOR MODEL NO	VOLT	HP	CFM	OIL CHG. PINTS	MAX			
					WATTS	RLA	MTA	LRA
06DM3136-337ARP	230	5	13.1	5	6600	28.6	40.0	150.0
06DM3166-037ARP	230	5	15.9	5	6600	28.6	40.0	150.0

## 06D COMPRESSOR DATA — THREE PHASE

### MEDIUM TEMPERATURE

#### 2 CYLINDER... AIR CONDITIONING & MEDIUM TEMPERATURE ... 60 HZ

COMPRESSOR MODEL NO	VOLT	HP	CFM	OIL CHG. PINTS	MAX			
					WATTS	RLA	MTA	LRA
06DM8086-3100	575	3	8	3.5	4100	4.5	7.0	28.4
06DM8086-3200	208/230	3	8	3.5	4100	11.2	17.4	71.0
06DM8086-3600	460	3	8	3.5	4100	5.6	8.7	35.5

#### 2 CYLINDER... AIR CONDITIONING & MEDIUM TEMPERATURE ... 50 HZ

COMPRESSOR MODEL NO	VOLT	HP	CFM	OIL CHG. PINTS	MAX			
					WATTS	RLA	MTA	LRA
06DM8086-3600	400	3	6.7	3.5	3400	7.0	8.7	35.5

#### 4 CYLINDER... AIR CONDITIONING & MEDIUM TEMPERATURE ... 60 HZ

COMPRESSOR MODEL NO	VOLT	HP	CFM	OIL CHG. PINTS	MAX			
					WATTS	RLA	MTA	LRA
06DM3136-317ARP	575	5	13.1	5	6250	6.9	10.8	40.0
06DM3136-327ARP	208/230	5	13.1	5	6250	17.3	27.0	100.0
06DM3136-367ARP	460	5	13.1	5	6250	8.6	13.5	50.0
06DM3166-317ARP	575	5	15.9	5	6250	6.9	10.8	40.0
06DM3166-327ARP	208/230	5	15.9	5	6250	17.3	27.0	100.0
06DM3166-367ARP	460	5	15.9	5	6250	8.6	13.5	50.0

#### 4 CYLINDER... AIR CONDITIONING & MEDIUM TEMPERATURE ... 50 HZ

COMPRESSOR MODEL NO	VOLT	HP	CFM	OIL CHG. PINTS	MAX			
					WATTS	RLA	MTA	LRA
06DM3136-367ARP	400	5	11	5	5,200	10.8	13.5	50.0
06DM3166-367ARP	400	5	13	5	5,200	10.8	13.5	50.0

#### 6 CYLINDER... AIR CONDITIONING & MEDIUM TEMPERATURE ... 60 HZ

COMPRESSOR MODEL NO	VOLT	HP	CFM	OIL CHG. PINTS	MAX			
					WATTS	RLA	MTA	LRA
06DM3376-317ARP	575	10	37.1	10	16,500	16.0	25.0	91.0
06DM3376-367ARP	460	10	37.1	10	16,500	19.9	31.0	114.0
06DM3376-327ARP	208/230	10	37.1	10	16,500	39.7	62.0	228.0

#### 6 CYLINDER... AIR CONDITIONING & MEDIUM TEMPERATURE ... 50 HZ

COMPRESSOR MODEL NO	VOLT	HP	CFM	OIL CHG. PINTS	MAX			
					WATTS	RLA	MTA	LRA
06DM3376-367ARP	400	10	31	10	13,700	22.1	31.0	114.0

\*This is the maximum rated load amp rating for the compressor motor. The overcurrent protection (circuit breaker) in the unit may result in much lower RLA values.

# CARLYLE SEMI-HERMETIC COMPRESSORS

CARLYLE SEMI-HERMETIC COMPRESSORS

## 06D COMPRESSOR DATA — THREE PHASE

### HIGH TEMPERATURE DUTY — SUCTION CUTOFF UNLOADING

#### 4 CYLINDER ... HIGH TEMPERATURE ... UNLOADING ... 60 HZ

COMPRESSOR MODEL NO	VOLT	HP	CFM	OIL CHG. PINTS	MAX			
					WATTS	RLA	MTA	LRA
06DS3136-315ARP	575	5	13.1	5	6,250	6.9	10.8	40.0
06DS3136-365ARP	460	5	13.1	5	6,250	8.6	13.5	50.0
06DS3136-325ARP	208/230	5	13.1	5	6,250	17.3	27.0	100.0
06DS8186-315ARP	575	6.5	18.3	7	10,800	11.3	17.6	64.0
06DS8186-365ARP	460	6.5	18.3	7	10,800	14.1	22.0	80.0
06DS8186-325ARP	208/230	6.5	18.3	7	10,800	28.2	44.0	160.0

#### 4 CYLINDER ... HIGH TEMPERATURE ... UNLOADING ... 50 HZ

COMPRESSOR MODEL NO	VOLT	HP	CFM	OIL CHG. PINTS	MAX			
					WATTS	RLA	MTA	LRA
06DS3136-365ARP	400	5	11	5	5,200	10.8	13.5	50.0
06DS8186-365ARP	400	6.5	15	7	9,000	15.7	22.0	80.0

#### 6 CYLINDER ... HIGH TEMPERATURE ... UNLOADING ... 60 HZ

COMPRESSOR MODEL NO	VOLT	HP	CFM	OIL CHG. PINTS	MAX			
					WATTS	RLA	MTA	LRA
06DS8246-315ARP	575	7.5	23.9	10	12,800	14.2	22.0	79.0
06DS8246-365ARP	460	7.5	23.9	10	12,800	17.8	27.8	99.0
06DS8246-325ARP	208/230	7.5	23.9	10	12,800	35.5	55.5	198.0
06DS8256-315ARP	575	7.5	23.9	10	12,800	14.2	22.0	79.0
06DS8256-365ARP	460	7.5	23.9	10	12,800	17.8	27.8	99.0
06DS8256-325ARP	208/230	7.5	23.9	10	12,800	35.5	55.5	198.0
06DS3286-315ARP	575	10	28	10	16,500	16.0	25.0	91.0
06DS3286-365ARP	460	10	28	10	16,500	19.9	31.0	114.0
06DS3286-325ARP	208/230	10	28	10	16,500	39.7	62.0	228.0
06DS5376-315ARP	575	15	37.1	10	20,700	20.5	32.0	96.0
06DS5376-365ARP	460	15	37.1	10	20,700	25.6	40.0	120.0
06DS5376-325ARP	208/230	15	37.1	10	20,700	57.1	89.0	266.0

#### 6 CYLINDER ... HIGH TEMPERATURE ... UNLOADING ... 50 HZ

COMPRESSOR MODEL NO	VOLT	HP	CFM	OIL CHG. PINTS	MAX			
					WATTS	RLA	MTA	LRA
06DS8246-365ARP	400	7.5	20	10	10,700	19.9	27.8	99.0
06DS3286-365ARP	400	10	23	10	13,700	22.1	31.0	114.0
06DS5376-365ARP	400	15	31	10	17,200	32.0	40.0	120.0

\*This is the maximum rated load amp rating for the compressor motor. The overcurrent protection (circuit breaker) in the unit may result in much lower RLA values.

# CARLYLE SEMI-HERMETIC COMPRESSORS

## 06D COMPRESSOR DATA — SINGLE PHASE

### LOW TEMP REFRIGERATION

#### 2 CYLINDER... LOW TEMP. REFRIGERATION ... 60 HZ

COMPRESSOR MODEL NO	VOLT	HP	CFM	OIL CHG. PINTS	MAX			
					WATTS	RLA	MTA	LRA
06DR1096-3350	208/230-1	2	8.7	3.5	3400	17.0	24.0	110.0

#### 4 CYLINDER... LOW TEMP. REFRIGERATION ... 60 HZ

COMPRESSOR MODEL NO	VOLT	HP	CFM	OIL CHG. PINTS	MAX			
					WATTS	RLA	MTA	LRA
06DR0136-337ARP	208/230-1	3	13.1	5	4800	23.3	32.6	100.0
06DR3166-337ARP	208/230-1	5	15.9	5	6400	28.6	40.0	150.0
06DR7186-337ARP	208/230-1	5	18.3	7	6400	28.6	40.0	150.0

## 06D COMPRESSOR DATA — THREE PHASE

### LOW TEMP REFRIGERATION

#### 2 CYLINDER... LOW TEMP. REFRIGERATION ... 60 HZ

COMPRESSOR MODEL NO	VOLT	HP	CFM	OIL CHG. PINTS	MAX			
					WATTS	RLA	MTA	LRA
06DR1096-3150	575	2	8.7	3.5	3,100	2.8	4.4	21.3
06DR1096-3250	280/230	2	8.7	3.5	3,100	7.6	12.1	53.3
06DR1096-3650	460	2	8.7	3.5	3,100	3.5	5.5	26.3

#### 2 CYLINDER... LOW TEMP. REFRIGERATION ... 50 HZ

COMPRESSOR MODEL NO	VOLT	HP	CFM	OIL CHG. PINTS	MAX			
					WATTS	RLA	MTA	LRA
06DR109-3650	400	2	7.5	3.5	2,600	3.8	5.5	26.6

#### 4 CYLINDER... LOW TEMP. REFRIGERATION ... 60 HZ

COMPRESSOR MODEL NO	VOLT	HP	CFM	OIL CHG. PINTS	MAX			
					WATTS	RLA	MTA	LRA
06DR0136-317ARP	575	3	13.1	5	4,300	4.5	7.0	28.4
06DR0136-327ARP	208/230	3	13.1	5	4,300	11.2	17.4	71.0
06DR0136-367ARP	460	3	13.1	5	4,300	5.6	8.7	35.5
06DR3166-317ARP	575	5	15.9	5	6,250	6.9	10.8	40.0
06DR3166-327ARP	208/230	5	15.9	5	6,250	17.3	27.0	100.0
06DR3166-367ARP	460	5	15.9	5	6,250	8.6	13.5	50.0
06DR7186-317ARP	575	5	18.3	7	6,250	6.9	10.8	40.0
06DR7186-327ARP	208/230	5	18.3	7	6,250	17.3	27.0	100.0
06DR7186-367ARP	460	5	18.3	7	6,250	8.6	13.5	50.0
06DR8206-317ARP	575	6.5	20	7	9,800	11.3	17.6	64.0
06DR8206-327ARP	208/230	6.5	20	7	9,800	28.2	44.0	160.0
06DR8206-367ARP	460	6.5	20	7	9,800	14.1	22.0	80.0

#### 4 CYLINDER... LOW TEMP. REFRIGERATION ... 50 HZ

COMPRESSOR MODEL NO	VOLT	HP	CFM	OIL CHG. PINTS	MAX			
					WATTS	RLA	MTA	LRA
06DR0136-367ARP	400	3	11	5	3,400	5.6	8.7	35.5
06DR3166-367ARP	400	5	13	5	5,200	8.6	13.5	50.0
06DR7186-367ARP	400	5	15	7	5,200	8.6	13.5	50.0
06DR8206-367ARP	400	6.5	16.7	7	8,200	14.1	22.0	80.0

# CARLYLE SEMI-HERMETIC COMPRESSORS

## 06D COMPRESSOR DATA — THREE PHASE(cont.)

### LOW TEMP REFRIGERATION

#### 6 CYLINDER... LOW TEMP. REFRIGERATION ... 60 HZ

COMPRESSOR MODEL NO	VOLT	HP	CFM	OIL CHG. PINTS	MAX			
					WATTS	RLA	MTA	LRA
06DR7246-317ARP	575	6.5	23.9	10	9,800	11.3	17.6	64.0
06DR7246-327ARP	208/230	6.5	23.9	10	9,800	28.2	44.0	160.0
06DR7246-367ARP	460	6.5	23.9	10	9,800	14.1	22.0	80.0
06DR7256-317ARP	575	6.5	23.9	10	9,800	11.3	17.6	64.0
06DR7256-327ARP	208/230	6.5	23.9	10	9,800	28.2	44.0	160.0
06DR7256-367ARP	460	6.5	23.9	10	9,800	14.1	22.0	80.0
06DR2286-317ARP	575	7.5	28	10	12,800	14.2	22.2	79.0
06DR2286-327ARP	208/230	7.5	28	10	12,800	35.6	55.5	198.0
06DR2286-367ARP	460	7.5	28	10	12,800	17.8	27.8	99.0
06DR3376-317ARP	575	10	37.1	10	16,500	16.0	25.0	91.0
06DR3376-327ARP	208/230	10	37.1	10	16,500	39.7	62.0	228.0
06DR3376-367ARP	460	10	37.1	10	16,500	19.9	31.0	114.0

#### 6 CYLINDER... LOW TEMP. REFRIGERATION ... 50 HZ

COMPRESSOR MODEL NO	VOLT	HP	CFM	OIL CHG. PINTS	MAX			
					WATTS	RLA	MTA	LRA
06DR724-367ARP	400	6.7	20	10	8,200	14.1	22.0	80.0
06DR228-367ARP	400	8	23.3	10	10,700	17.8	27.8	99.0
06DR337-367ARP	400	9	31	10	13,700	19.9	31.0	114.0

\*This is the maximum rated load amp rating for the compressor motor. The over current protection (circuit breaker) in the unit may result in much lower RLA values.

# CARLYLE SEMI-HERMETIC COMPRESSORS

## GUIDE TO 06E PART NUMBERING SYSTEM

	PRODUCT SERIES			DESIGN VARIABLES	USAGE	SIZE CFM CPRSR	HOM. H.P. CPRSR UNITS	ELECTRICAL CHARACTERISTICS	FUTURE DESIGN	MODEL AND PACKAGING
MODEL	0	6	E	A	1	5	0	3	4	0
DIGIT	1	2	3	4	5	6	7	8	9	10

1ST, 2ND, 3RD DIGITS  
06E HERMETIC COMPRESSOR

▲ 4TH DIGIT  
SUCTION  
CUTOFF  
UNLOADING

4TH DIGIT UNLOADER VARIABLE			DESCRIPTION	REVERSED CONT BOX HEAD & CYL. USED BY CAC FOR UNITS SEE NOTE 2
LETTER	STANDARD	SERVICE		
A	X		NO UNLOADERS	
B	X		ONE UNLOADER - ELECTRIC	
C	X		TWO UNLOADERS - ELECTRIC	
D	X		ONE UNLOADER - PRESSURE	
E	X		TWO UNLOADERS - PRESSURE	
F	X		NO UNLOADERS	
J	X		ONE UNLOADER - ELECTRIC	
K	X		TWO UNLOADERS - ELECTRIC	
L	X		ONE UNLOADER - PRESSURE	
N	X		TWO UNLOADERS - PRESSURE	
G	X		NO UNLOADERS - PRESSURE	
P	X		ONE UNLOADER - ELECTRIC	
U	X		TWO UNLOADERS - ELECTRIC	
V	X		ONE UNLOADER - PRESSURE	
W	X		TWO UNLOADERS - PRESSURE	
M	X		MEDIUM TEMP. - NO UNLOADERS	
R	X		REFRIGERATION - NO UNLOADERS	
T	X		SERVICE CMPRSR. w/ (1) BLOCKED SUCTION CUT- OFF UNLOADER HEAD	REPLACES 2, 3,4, 5, 6, 7, 8 & 9
X		X	SERVICE COMPRESSOR - AIR CONDITION.	REPLACES A, B,C, D, E, F, J, K, L & N
Y		X	SVC. CPRSR. - REFRIG.	REPLACES R

10TH DIGIT PACKAGING			
0	MODEL NO.	4	MULTI PACK EXP
1	SINGLE PACK LESS VALVE	5	PALLETIZED LESS VALVE
2	MULTI PACK DOM	7	PALLETIZED WITH VALVE
3	SINGLE PACK WITH VALVE	ARP	CCRP MODEL

9TH DIGIT SERVICE DESIGN VARIABLE	
1	THERMOTECTOR PROTECTION OLD STYLE CRANKCASE
2	NEW MANUFACTURE SERVICE COMPRESSOR
3	FUTURE USE
4	REMANUFACTURED SERVICE COMPRESSOR LOW TEMP
5	OLD STYLE CRANKCASE ROBERTSHAW SENSORS & TAPPED CYL. HDS. MOTOR PROTECTION KIT REQ'D. FOR THERMOTECTOR APPLICATION
6	REMANUFACTURED SERVICE COMPRESSOR
7	REMANUFACTURED SERVICE COMPRESSOR MED. TEMP.

9TH DIGIT PROD. DESIGN VARIABLE	
0	OEM MODEL
1	ELECTRICAL REDESIGN
2	
3	FIRST REDESIGN LONG STROKE CRANKCASE
4	SECOND DESIGN ROBERTSHAW MOTOR PROTECTION
5	
6	CPRSR. MODEL LESS MOTOR PROTECTION
7	MEDIUM TEMP. ROBERTSHAW MOTOR PROTECTION
8	
9	CEMAK MODEL

5TH DIGIT USAGE			
0	LIGHT DUTY CPRSR. OR CPRSR. UNIT TONNAGE	5	
1	MEDIUM DUTY CPRSR.	7	UNLOADING MODEL, LT & MT
2	HEAVY DUTY CPRSR.	8	SPECIAL ORDER
3	OILLESS	9	
4			

6TH & 7TH DIGIT COMPRESSOR SIZE				
NO. CYL.	STD. PROD.	LONG STROKE STD. CLEARANCE	LONG STROKE HI CLEARANCE	SHORT STROKE
4	50 CFM	66 CFM	60 CFM	--
6	75 CFM	99 CFM	--	65 CFM

COMPRESSOR UNITS (CAC USAGE)		
NO CYL.	STD. PROD. CPRSR.	LONG STROKE CPRSR.
4	22 (NOM TONS)	--
6	33 (NOM TONS)	44 (NOM TONS)

8TH DIGIT ELECT	
1	575 - 3 - 60
2	200 - 1 - 60
3	208/230/460 - 3 - 60
4	200 - 3 - 60
5	230 - 3 - 60
6	400 - 3 - 50
	460 - 3 - 60
7	230 - 1 - 50
8	230 - 3 - 50
9	220/380 - 3 - 60
0	208/230 - 3 - 60
A	415 - 3 - 50

**SYMBOLS:**

▲ = SAMPLE PART NO. 06E2150360

**NOTES:**

- 220-3-60 UNIT DESIGNED FOR USE ON 198 to 242 V
- 380-3-60 342418 V
- 575-3-60 518660 V
- 460-3-60 414529 V
- 230-3-60 198264 V
- 230-3-50 198264 V
- 400-3-50 342457 V
- 200-3-60 180229 V

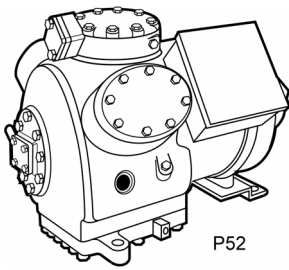
- RVS HD CPRSR -- ORIGINAL DESIGN NO. 4TH DIGIT A, B, C, D, CRF 9TH DIGIT

REDESIGN NO. 4TH DIGIT F, J, K, L OR N  
9TH DIGIT SAME AS STANDARD

# CARLYLE SEMI-HERMETIC COMPRESSORS

06E

CARLYLE SEMI-HERMETIC COMPRESSORS



## HIGH TEMPERATURE COMPRESSOR APPLICATION DATA

For mounting configuration, dimensions and weight refer to outline drawings on following pages.

MODEL NO.	NOMINAL HP	NO. OF CYL.	CFM @ 1750 RPM	SUCTION TEMP. RANGE (F)	R-22	
					CAPACITY (000 BTUH)	
					Air Cooled 45 SST 130 SCT 0° SC	Water Cooled 40 SST 105 SCT 0° SC
06ET750	20	4	50.0	0 to 50	223.3	247.0
06ET765	25	6	65.0	0 to 50	300.3	334.7
06ET766	25	4	66.0	0 to 50	290.0	302.6
06ET775	30	6	75.0	0 to 50	332.8	363.0
06ET799	40	6	99.0	0 to 50	437.9	476.3

## LOW AND MEDIUM TEMPERATURE COMPRESSOR APPLICATION DATA

MODEL NO.	HP	NO. OF CYL.	CFM @ 1750 RPM	SUCTION TEMP. RANGE (F)		CAPACITY (MBtuH)			
						-25 SST 110 SCT 65 RGT 0 SC	20 SST 120 SCT 65 RGT 0 SC	-10 SST 110 SCT 65 RGT 0 SC	40 SST 120 SCT 65 RGT 0 SC
						R-404A	R-404A	R-22	R-22
06EY750	15	4	50.3	-40 to 0*	-35 to 0**	55.5	-	73.3	-
06EZ750	15	4	50.3	0 to 40	0 to 40	-	146.0	-	219.7
06EY766	20	4	66.0	-40 to 0*	-	67.3	-	-	-
06EZ766	25	4	66.0	0 to 40	0 to 50	-	184.9	-	277.0
06EY765	20	6	65.0	-40 to 0*	-35 to 0**	67.3	-	92.4	-
06EY775	25	6	75.4	-40 to 0*	-35 to 0**	78.6	-	107.4	-
06EZ775	25	6	75.4	0 to 40	0 to 50	-	216.0	-	323.8
06EY799	30	6	99.0	-40 to 0*	-35 to 0**	102.0	-	135.9	-
06EZ799	35	6	99.0	0 to 40	0 to 50	-	293.6	-	422.6

\* Cylinder head cooling fan required for SST below - 25 degrees

\*\* Cylinder head cooling fan and liquid injection required for R-22, Low Temperature applications

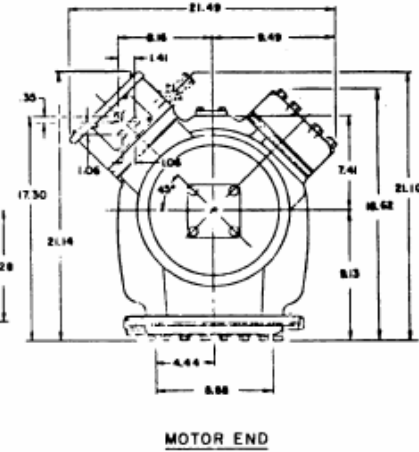
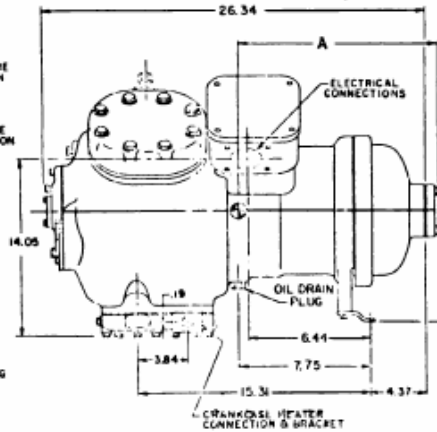
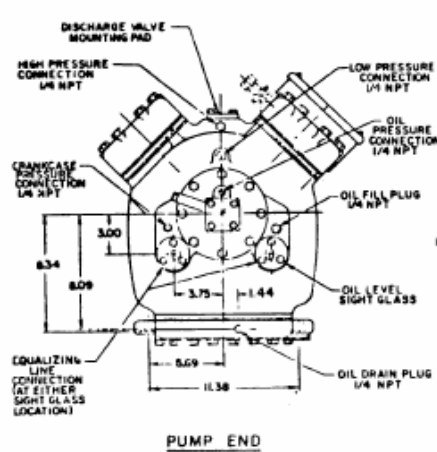
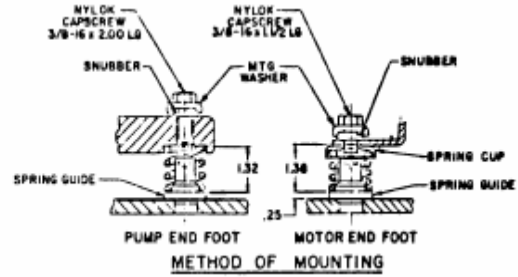
# CARLYLE SEMI-HERMETIC COMPRESSORS

## 06E OUTLINE DRAWINGS

NOTE: Compressors shown with optional accessories - contact your distributor for details.

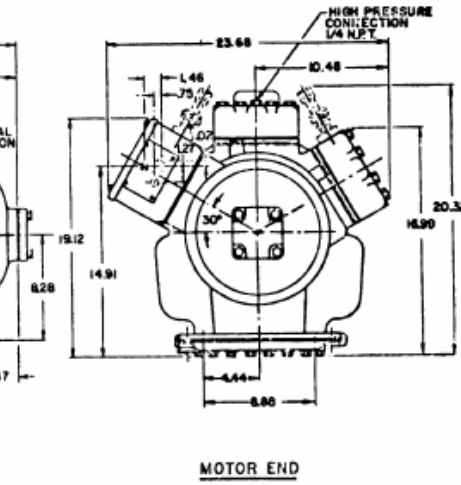
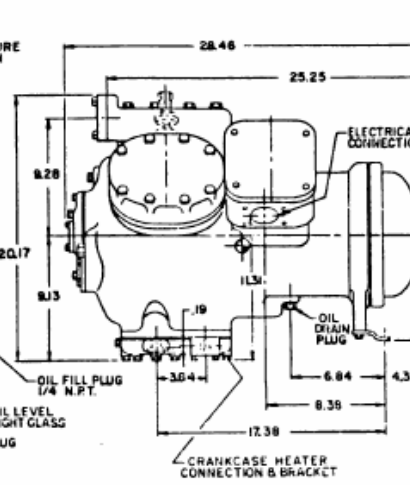
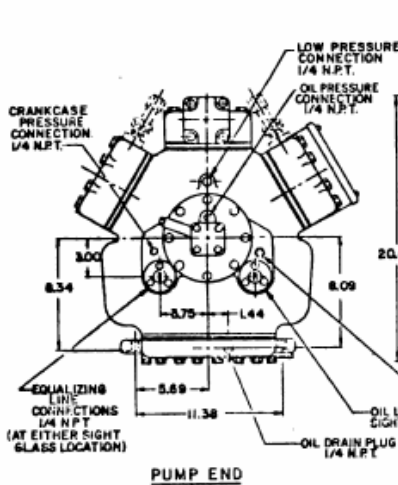
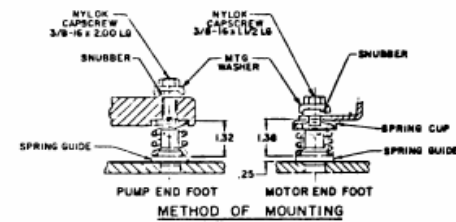
### 06E COMPRESSORS

	06E( )150	06E( )250	06E( )266
MOTOR HORSEPOWER	15	20	25
NO. OF CYLINDERS	4	4	4
BORE AND STROKE (in.)	2.688 x 2.188	2.688 x 2.188	2.688 x 2.874
DISPLACEMENT CFM AT 1750 RPM	50	50	66
OIL, CHARGE, PINTS CPP33-2	14	14	14
NAMEPLATE TEST PRESSURE - HIGH	450 PSI	450 PSI	450 PSI
NAMEPLATE TEST PRESSURE -LOW	315 PSI	315 PSI	315 PSI
DRY WEIGHT LESS SERVICE VALVES	390 LBS	400 LBS	416 LBS
MAX. OPERATING CONDITIONS R-22	50/120° F	50/145° F	50/130° F



### 06E COMPRESSORS

	06E( )265	06E( )175	06E( )275
MOTOR HORSEPOWER	25	25	30
NO. OF CYLINDERS	6	6	6
BORE AND STROKE (in.)	2.688 x 1.980	2.688 x 2.188	2.688 x 2.188
DISPLACEMENT CFM AT 1750 RPM	65	75	75
OIL, CHARGE, PINTS CPP33-2	19	19	19
NAMEPLATE TEST PRESSURE -HIGH	450 PSI	450 PSI	450 PSI
NAMEPLATE TEST PRESSURE -LOW	315 PSI	315 PSI	315 PSI
DRY WEIGHT LESS SERVICE VALVES	460 LBS	435 LBS	460 LBS
MAX. OPERATING CONDITIONS R-22	50/145° F	50/120° F	50/145° F



CARLYLE SEMI-HERMETIC COMPRESSORS

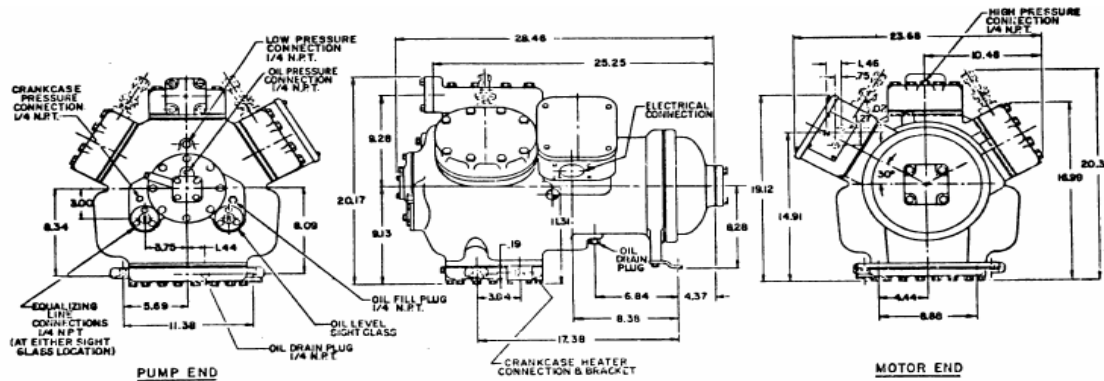
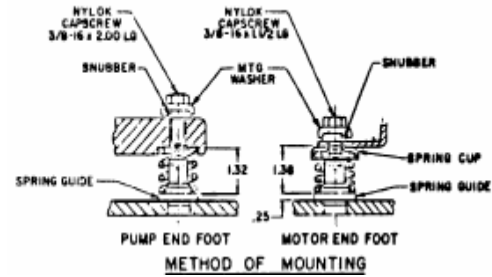
# CARLYLE SEMI-HERMETIC COMPRESSORS

## 06E OUTLINE DRAWINGS(Cont.)

Note: Compressors shown with optional accessories - contact your distributor for details

### 06E COMPRESSORS

	06E( )099	06E( )199	06E( )299
MOTOR HORSEPOWER	30	35	40
NO. OF CYLINDERS	6	6	6
BORE AND STROKE (in.)	2.688 x 2.874	2.688 x 2.874	2.688 x 2.874
DISPLACEMENT CFM AT 1750 RPM	65	99	99
OIL, CHARGE, PINTS CPP33-2	19	19	19
NAMEPLATE TEST PRESSURE -HIGH	450 PSI	450 PSI	450 PSI
NAMEPLATE TEST PRESSURE -LOW	315 PSI	315 PSI	315 PSI
DRY WEIGHT LESS SERVICE VALVES	495 LBS	495 LBS	519 LBS
MAX. OPERATING CONDITIONS R-22		50°/120° F	50°/145° F



# CARLYLE SEMI-HERMETIC COMPRESSORS

## 06E COMPRESSOR DATA - THREE PHASE

### HIGH EFFICIENCY MODELS

#### 4 CYLINDER ... HIGH TEMPERATURE ... 60 HZ

COMPRESSOR MODEL NO	VOLT	HP	CFM	OIL CHG. PINTS	MAX			
					WATTS	RLA	MTA	LRA
06ET150-36ARP	208-230/460	15	50	14	22,000	72/36	90/46	283/142
06ET150-66ARP**	460	15	50	14	22,000	36	46	142
06ET250-16ARP	575	20	50	14	25,300	36	45	120
06ET250-36ARP	208-230/460	20	50	14	25,300	87/44	108/54	345/173
06ET250-66ARP**	460	20	50	14	25,300	44	54	173

#### 4 CYLINDER ... HIGH TEMPERATURE ... 50 HZ

COMPRESSOR MODEL NO	VOLT	HP	CFM	OIL CHG. PINTS	MAX			
					WATTS	RLA	MTA	LRA
06ET150-36ARP	200/400	15	41.7	14	18,300	72/36	90/46	283/142
06ET150-66ARP**	400	15	41.7	14	18,300	36	46	142
06ET250-36ARP	200/400	20	41.7	14	21,100	87/44	108/54	345/173
06ET250-66ARP**	400	20	41.7	14	21,100	44	54	173

#### 6 CYLINDER ... HIGH TEMPERATURE ... 60 HZ

COMPRESSOR MODEL NO	VOLT	HP	CFM	OIL CHG. PINTS	MAX			
					WATTS	RLA	MTA	LRA
06ET265-16ARP	575	25	65	19	33,600	46	57	164
06ET265-36ARP	208-230/460	25	65	19	33,600	112/56	140/70	446/223
06ET265-66ARP**	460	25	65	19	33,600	56	70	223
06ET175-36ARP	208-230/460	25	75	19	33,600	112/56	140/70	446/223
06ET175-66ARP**	460	25	75	19	33,600	56	70	223
06ET275-16ARP	575	30	75	19	39,100	52	65	176
06ET275-36ARP	208-230/460	30	75	19	39,100	135/68	168/84	506/253
06ET275-66ARP**	460	30	75	19	39,100	68	84	253
06ET299-16ARP	575	40	99	19	54,000	75	94	276
06ET299-36ARP	208-230/460	40	99	19	54,000	189/95	236/118	690/345
06ET299-66ARP**	460	40	99	19	54,000	95	118	345

#### 6 CYLINDER ... HIGH TEMPERATURE ... 50 HZ

COMPRESSOR MODEL NO	VOLT	HP	CFM	OIL CHG. PINTS	MAX			
					WATTS	RLA	MTA	LRA
06ET265-36ARP	200/400	25	54	19	28,000	112/56	140/70	446/223
06ET265-66ARP**	400	25	54	19	28,000	56	70	223
06ET175-36ARP	200/400	25	62.5	19	28,000	112/56	140/70	446/223
06ET175-66ARP**	400	25	62.5	19	28,000	56	70	223
06ET275-36ARP	200/400	30	62.5	19	32,600	135/68	168/84	506/253
06ET275-66ARP**	400	30	62.5	19	32,600	68	84	253
06ET299-36ARP	200/400	40	82.5	19	45,000	189/95	236/118	690/345
06ET299-66ARP**	400	40	82.5	19	45,000	95	118	345

\*This is the maximum rated load amp rating for the compressor motor. The over current protection (Circuit breaker) in the unit may result in much lower RLA values.

\*\*Order the discrete 400/460-3-50/60 volt compressor for part wind start applications only.

# CARLYLE SEMI-HERMETIC COMPRESSORS

CARLYLE SEMI-HERMETIC COMPRESSORS

## 06E COMPRESSOR DATA - THREE PHASE

### LOW TEMP. & MED. TEMP. REFRIGERATION

#### 4 CYLINDER... LOW TEMP. REFRIGERATION ... 60 HZ

COMPRESSOR MODEL NO	VOLT	HP	CFM	OIL CHG. PINTS	MAX			
					WATTS	RLA	MTA	LRA
06EY750-14ARP	575	15	50.3	14	22,000	31	38	98
06EY750-34ARP	208-230/460	15	50.3	14	22,000	72/36	90/46	283/142
06EY750-64ARP	460	15	50.3	14	22,000	36	46	142
06EY766-14ARP	575	20	66	14	25,300	36	46	120
06EY766-34ARP	208-230/460	20	66	14	25,300	87/44	108/54	345/173
06EY766-64ARP	460	20	66	14	25,300	44	54	173

#### 4 CYLINDER ... LOW TEMP. REFRIGERATION ... 50 HZ

COMPRESSOR MODEL NO	VOLT	HP	CFM	OIL CHG. PINTS	MAX			
					WATTS	RLA	MTA	LRA
06EY750-34ARP	200/400	15	41.7	14	18,300	72/36	90/46	283/142
06EY750-64ARP	400	15	41.7	14	18,300	36	46	142
06EY766-34ARP	200/400	20	55	14	28,000	87/44	108/54	345/173
06EY766-64ARP **	400	20	55	14	28,000	44	54	173

#### 6 CYLINDER... LOW TEMP. REFRIGERATION ... 60 HZ

COMPRESSOR MODEL NO	VOLT	HP	CFM	OIL CHG. PINTS	MAX			
					WATTS	RLA	MTA	LRA
06EY765-14ARP	575	20	65	19	25,300	36	45	120
06EY765-34ARP	208-230/460	20	65	19	25,300	87/44	108/54	345/173
06EY765-64ARP **	460	20	65	19	25,300	44	54	173
06EY775-14ARP	575	20	75.4	19	25,300	36	45	120
06EY775-34ARP	208-230/460	20	75.4	19	25,300	87/44	108/54	345/173
06EY775-64ARP **	460	20	75.4	19	25,300	45	56	150
06EY799-14ARP	575	30	99	19	39,100	52	65	176
06EY799-34ARP	208-230/460	30	99	19	39,100	135/68	168/84	506/253
06EY799-64ARP **	460	30	99	19	39,100	68	84	253

#### 6 CYLINDER ... LOW TEMP. REFRIGERATION ... 50 HZ

COMPRESSOR MODEL NO	VOLT	HP	CFM	OIL CHG. PINTS	MAX			
					WATTS	RLA	MTA	LRA
06EY765-34ARP	200/400	20	54	19	21,100	87/44	108/54	345/173
06EY765-64ARP **	400	20	54	19	21,100	44	54	173
06EY775-34ARP	200/400	20	62.5	19	21,100	87/44	108/54	345/173
06EY775-64ARP **	400	20	62.5	19	21,100	45	56	150
06EY799-34ARP	200/400	30	82.5	19	32,600	135/68	168/84	506/253
06EY799-64ARP **	400	30	82.5	19	32,600	68	84	253

#### 4 CYLINDER ... MEDIUM TEMP. REFRIGERATION ... 60 HZ

COMPRESSOR MODEL NO	VOLT	HP	CFM	OIL CHG. PINTS	MAX			
					WATTS	RLA	MTA	LRA
06EZ750-17ARP	575	15	50.3	14	22,000	31	38	98
06EZ750-37ARP	208-230/460	15	50.3	14	22,000	72/36	90/46	283/142
06EZ750-67ARP**	460	15	50.3	14	22,000	36	46	142
06EZ766-17ARP	575	25	66	14	33,600	46	57	164
06EZ766-37ARP	208-230/460	25	66	14	33,600	112/56	140/170	446/223
06EZ766-67ARP **	460	25	66	14	33,600	57	71	205

#### 4 CYLINDER ... MEDIUM TEMP. REFRIGERATION ... 50 HZ

COMPRESSOR MODEL NO	VOLT	HP	CFM	OIL CHG. PINTS	MAX			
					WATTS	RLA	MTA	LRA
06EZ750-37ARP	200/400	15	41.7	14	18,300	72/36	90/46	283/142
06EZ750-67ARP**	400	15	41.7	14	18,300	36	46	142
06EZ766-37ARP	200/400	25	55	14	28,000	112/56	140/170	446/223
06EZ766-67ARP **	400	25	55	14	28,000	57	71	205

# CARLYLE SEMI-HERMETIC COMPRESSORS

## 06E COMPRESSOR DATA - THREE PHASE

### LOW TEMP. & MED. TEMP. REFRIGERATION

#### 6 CYLINDER ... MEDIUM TEMP. REFRIGERATION ... 60 HZ

COMPRESSOR MODEL NO	VOLT	HP	CFM	OIL CHG. PINTS	MAX			
					WATTS	RLA	MTA	LRA
06EZ775-17ARP	575	25	75.4	19	33,600	46	57	164
06EZ775-37ARP	208-230/460	25	75.4	19	33,600	112/56	140/70	446/223
06EZ775-67ARP **	460	25	75.4	19	33,600	56	70	223
06EZ799-17ARP	575	35	99	19	47,600	62	77	212
06EZ799-37ARP	208-230/460	35	99	19	47,600	155/77	193/96	610/305
06EZ799-67ARP **	460	35	99	19	47,600	77	96	305

#### 6 CYLINDER ... MEDIUM TEMP. REFRIGERATION ... 50 HZ

COMPRESSOR MODEL NO	VOLT	HP	CFM	OIL CHG. PINTS	MAX			
					WATTS	RLA	MTA	LRA
06EZ775-37ARP	200/400	25	62.5	19	28,000	112/56	140/170	446/223
06EZ775-67ARP **	400	25	62.5	19	28,000	56	70	223
06EZ799-37ARP	200/400	35	82.5	19	39,700	155/77	193/96	610/305
06EZ799-67ARP **	400	35	82.5	19	39,700	77	96	305

\*This is the maximum rated load amp rating for the compressor motor. The overcurrent protection (circuit breaker) in the unit may result in much lower RLA values.

\*\*Order the discrete 400/460-3-50/60 volt compressor for part wind start applications only.

#ARP Model.

# CARLYLE SEMI-HERMETIC COMPRESSORS

CARLYLE SEMI-HERMETIC COMPRESSORS

## REQUIRED CIRCUIT BREAKERS: 06E ... 60 HZ

COMPRESSOR MODEL	VOLTAGE	PART ARP
06EY750-14ARP	575	HH83XA460
750-64ARP	400/460	HH83XA463
750-34ARP	208/230	HH83XB626
	460	HH83XA463
06EY76(5/6)-14ARP	575	HH83XA461
76(5/6)-64ARP	400/460	HH83XA424
76(5/6)-34ARP	208/230	HH83XB625
	460	HH83XA424
06EY775-14ARP	575	HH83XA461
775-64ARP	400/460	HH83XA424
775-34ARP	208/230	HH83XB625
	460	HH83XA424
06EY799-14ARP	575	HH83XA430
799-64ARP	400/460	HH83XA478
799-34ARP	208/230	HH83XC539
	460	HH83XA478

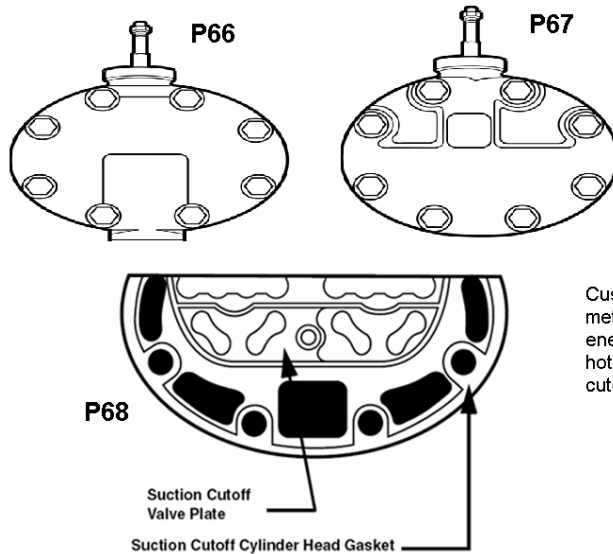
06EZ750-17ARP	575	HH83XA460
750-67ARP	400/460	HH83XA463
750-37ARP	208/230	HH83XB626
	460	HH83XA463
06EZ766-17ARP	575	HH83XA469
766-67ARP	400/460	HH83XA426
766-37ARP	208/230	HH83XC509
06EZ775-17ARP	575	HH83XA469
775-67ARP	400/460	HH83XA426
775-37ARP	208/230	HH83XC509
	460	HH83XA426
06EZ799-14ARP	575	HH83XA453
799-64ARP	400/460	HH83XA547
799-34ARP	208/230	HH83XC532
	460	HH83XA547

06ET250-16ARP	575	HH83XA461
250-66ARP	400/460	HH83XA424
250-36ARP	208/230	HH83XB625
	460	HH83XA424
06ET26(5/6)-16ARP	575	HH83XA469
26(5/6)-66ARP	400/460	HH83XA426
26(5/6)-36ARP	208/230	HH83XC509
	460	HH83XA426
06ET275-16ARP	575	HH83XA430
275-66ARP	400/460	HH83XA478
275-36ARP	208/230	HH83XC539
	460	HH83XA478
06ET299-16ARP	575	HH83XA551
299-66ARP	400/460	HH83XA550
299-36ARP	208/230	HH83XC537
	460	HH83XA550

NOTE - All breakers listed are for Across The Line start. Contact Carlyle Technical Support for Part Winding Start circuit breaker information

# CARLYLE SEMI-HERMETIC COMPRESSORS/ACCESSORIES

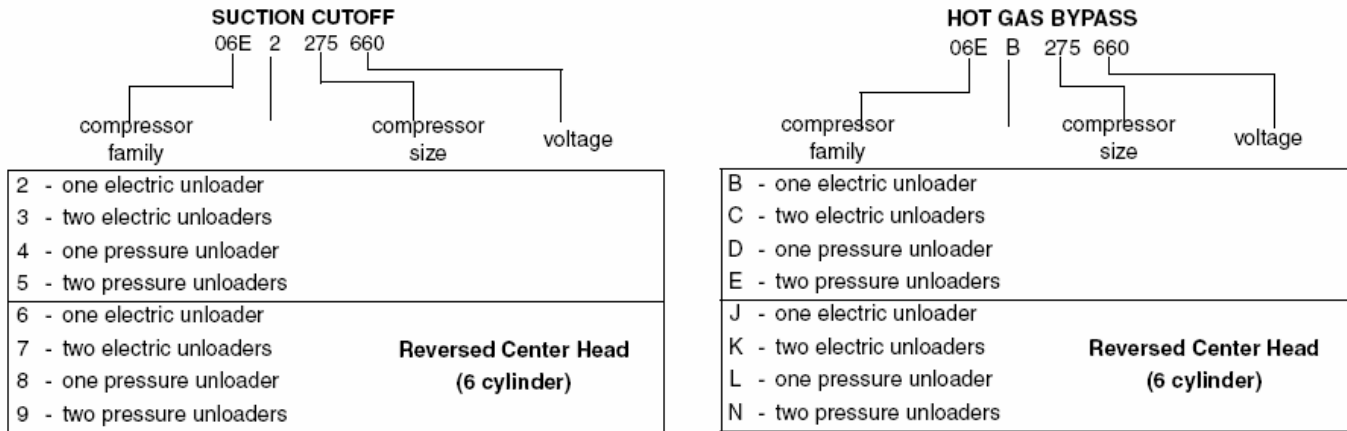
## SUCTION CUTOFF UNLOADING VS HOT GAS BYPASS UNLOADING



Custom cutoff unloading is the "State of the Art" unloading method for the 06D/06E compressors. There are substantial energy savings and improved compressor reliability when a hot gas bypass unloading system is replaced with suction cutoff unloading.

Since 1981 many of the Commercial Products Carrier produced with 06E compressors utilized "Suction Cutoff Unloading" in place of Hot Gas Bypass Unloading. It is easy to identify a suction cutoff unloading compressor from a hot gas bypass unloading compressor. This can be done in one of two ways:

#1) The Finished Goods (new) compressor model number is different than the hot gas bypass model number.



#2) The unloading heads themselves physically look different.

The parts used in Hot Gas Bypass are different from those used in Suction Cutoff Unloading. These differences are:

HOT GAS BYPASS PART NO	SUCTION CUTOFF PART NO	DESCRIPTION
06EA660105	--	Valve Plate Package
06EA503314	--	Cylinder Head Gasket
--	06EA660137	Valve Plate Package
--	06EA503334	Cylinder Head Gasket
--	06EA503524	Cylinder Head

The valve plate gasket for both Hot Gas Bypass and Suction Cutoff is 06EA504884.

Both hot gas bypass and suction cutoff use the same Control Valve Packages:

Pressure Control Valve P/N      **06EA660100**  
 Electric Control Valve P/N      **06EA660135**

These control valves are similar to those you used in the past except that the bypass piston is now separate from the valve and the pressure control valve has had internal modifications that allow it to operate on suction cutoff applications

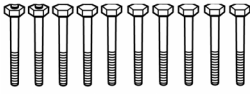
# CARLYLE SEMI-HERMETIC COMPRESSORS/ACCESSORIES

CARLYLE SEMI-HERMETIC COMPRESSORS/ACCESSORIES

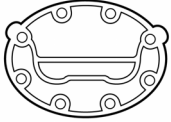
## 06D SUCTION CUTOFF UNLOADING KITS

### ELECTRIC CAPACITY CONTROL

MODIFICATION PACKAGE PART NO.: 06DA660089

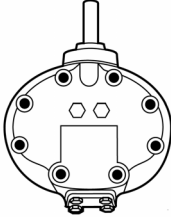


The capacity control valve in this package is actuated by an electric solenoid. The solenoid is either energized or de-energized by the action of an external controller. The solenoid coil is not supplied with this package.

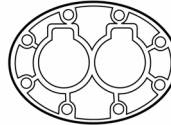


This package can be used to (1) convert an 06D compressor with hot gas bypass unloading to electrically operated suction cutoff unloading, (2) add unloading or (3) add a second bank of unloading to an 06D compressor.

The kit consists of the following:



- Cylinder Head Assembly (incl. capacity control valve)
- Valve Plate Gasket
- Cylinder Head Gasket
- Cylinder Head Bolts
- Instructions



Solenoid Coils for electric unloader valve:

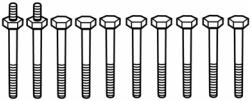
PART NO.	VOLTAGE
EF19ZE024	24
EF19ZE120	120
EF19ZE240	208-240

P64

### PRESSURE CAPACITY CONTROL

MODIFICATION PACKAGE PART NO.: 06DA660090

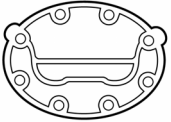
#### PRESSURE OPERATED



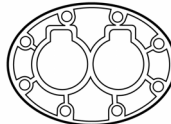
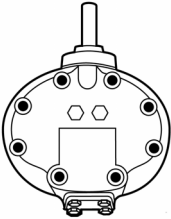
NOT RECOMMENDED FOR REFRIGERATION APPLICATIONS

The capacity control valve in this package is controlled by suction pressure and actuated by discharge pressure. This package can be used to (1) convert an 06D compressor with hot gas bypass unloading to suction cutoff unloading, (2) add unloading, or (3) add a second bank of unloading to an 06D compressor.

The kit consists of the following:



- Cylinder Head Assembly (incl. capacity control valve)
- Valve Plate Gasket
- Cylinder Head Gasket
- Cylinder Head Bolts
- Instructions



P65

## 06D SUCTION CUTOFF UNLOADING KITS

### SUCTION CUTOFF UNLOADING

REPAIR KIT PART NO.: 06DA660111

This kit contains the parts used internally for the suction cutoff unloading head. It is used for both electric and pressure operated suction cutoff unloading applications.

The kit **does not** contain the capacity control valve.

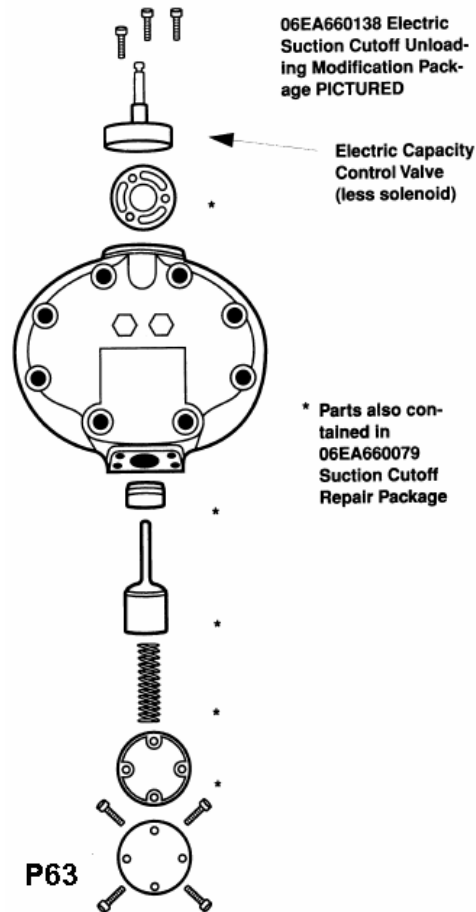
The kit contains the following:

- Piston and Ring
- Valve Body
- Spring
- Capacity Control Valve Gasket
- Cover Gasket
- Strainer
- Instructions

## 06E SUCTION CUTOFF UNLOADING KIT

### ELECTRIC CAPACITY CONTROL

MODIFICATION PACKAGE PART NO.: 06EA660138



The capacity control valve in this package is actuated by an electric solenoid. The solenoid is either energized or de-energized by the action of an external controller.

The solenoid coil is not supplied with this package.

This package can be used to (1) convert an 06E compressor with hot gas bypass unloading to electrically operated suction cutoff unloading, (2) add unloading, or (3) add a second bank of unloading to an 06E compressor.

The kit contains the following:

- Cylinder Head Assembly (incl. capacity control valve)
- Valve Plate Gaskets (AC & Ref.)
- Suction Valves
- Cylinder Head Gasket
- Capscrews
- Washers
- Instructions

Solenoid coils for electric unloader valve:

PART NO.	VOLTAGE
EF19ZE024	24
EF19ZE120	120
EF19ZE240	208-240

## 06E SUCTION CUTOFF UNLOADING KIT

### PRESSURE CAPACITY CONTROL

MODIFICATION PACKAGE PART NO.: 06EA660139

NOT RECOMMENDED FOR REFRIGERATION APPLICATIONS

The capacity control valve in this package is controlled by suction pressure and actuated by discharge pressure. This package can be used to (1) convert an 06E compressor with hot gas bypass unloading to pressure operated suction cutoff unloading, (2) add unloading, or (3) add a second bank of unloading to an 06E compressor.

The kit contains the following:

- Cylinder Head Assembly (incl. capacity control valve)
- Valve Plate Gaskets (AC & Ref.)
- Suction Valves
- Cylinder Head Gasket
- Capscrews
- Washers
- Wrench
- Instructions

### SUCTION CUTOFF UNLOADING

REPAIR KIT PART NO.: 06EA660079

This kit contains the parts used internally for the suction cutoff unloading head. It is used for both electric and pressure operated suction cutoff unloading applications.

The kit **does not** contain the capacity control valve.

The kit contains the following:

- Piston and Ring
- Valve Body
- Spring
- Capacity Control Valve Gasket
- Cover Gasket
- Strainer
- Instructions

### CONTROL VALVE KITS

These kits contain the capacity control valve. The 06D and 06E compressors use the same capacity control valve. (The piston assembly is used with hot gas bypass unloading only.)

#### **06EA660100 Pressure operated kit contains the following:**

- Pressure Operated Capacity Control Valve
- Capacity Control Valve Gasket
- Piston Assembly (for HGBP)
- Wrench
- Instructions

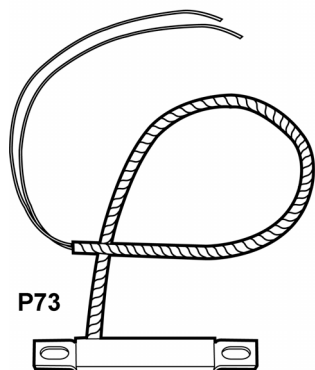
#### **06EA660135 Electrically operated kit contains the following:**

- Electrically Operated Capacity Control Valve (Select appropriate solenoid coil: 24, 120, or 208-240V)
- Capacity Control Valve Gasket
- Piston Assembly (for HGBP)
- Instructions

# CARLYLE SEMI-HERMETIC COMPRESSORS/ACCESSORIES

## CRANKCASE HEATERS

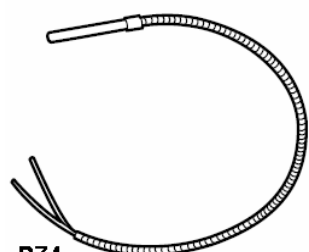
**BAR/STRIP STYLE**  
**06D, 2 CYL. AND 4 CYL. 8, 9, 13, 16 CFM MODELS**



PART NO	WATTS	VOLTS	LEAD LENGTH (in)	CONDUIT LENGTH (in)
06DA660091	50	115	39	24
06DA660092	50	230	39	24

Dimensions: 7 1/2" Long, 1" Wide, 1/2" Thick

**06D, 06E, 06CC, 06CY**



- NEW STRAIGHT TUBE HEATER DESIGN
- KIT CONTAINS CRANKCASE HEATER, RETAINER CLIP AND ANTI-SHORT BUSHING, HEAT CONDUCTING GREASE (P/N: 38AQ680001)

**P74**

CRANKCASE HEATER PACKAGE	HEATER NUMBER	WATTS	VOLTS	CONDUIT LENGTH (in)	WIRE LENGTH (in)
06EA660165	HT36DM132	180	115	19"	24"
06EA660167	HT36DM134	180	115	52"	73"
06EA660166	HT36DM432	180	230	19"	24"
06EA660168	HT36DM434	180	230	52"	73"
06DA660076	HT36DL480	125	480	NONE	24"
06EA660107	HT36FL379	125	120	52"	73"
06EA660108	HT36FL479	125	240	52"	73"

## LIQUID INJECTION VALVES (For R-22 Low Temp. Apps)

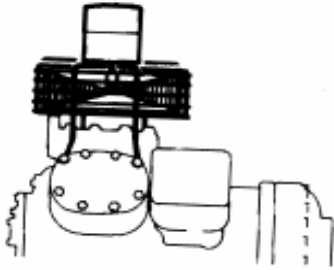
**06DR, 06EY, 06CY**

PART NO.	VALVE SIZE	USAGE
EA11ZC011	1/2 Ton	All 06DR, 06CY16, 18, 24, 25, 28, 37
EA11ZC022	1 Ton	06EY750, 765, 775 — 06CY550, 665, 675
EA11ZC030	1 1/2 Ton	06EY799 — 06CY899

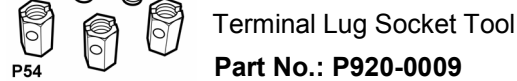
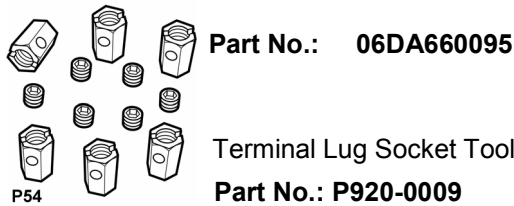
# CARLYLE SEMI-HERMETIC COMPRESSORS/ACCESSORIES

## OPTIONAL ACCESSORIES - 06D AND 06E CYLINDER HEAD COOLING FAN PACKAGE

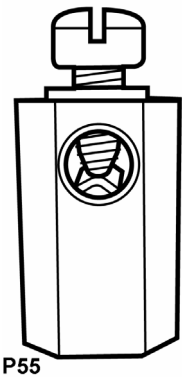
	P/N	
06DR	06DR660014	208/230-1-60/1550 RPM
06EY	06ER660011	208/230-1-60/1550 RPM



## 06D TERMINAL LUG PACKAGE (6 TERMINAL LUGS AND SET SCREWS PER PKG.)



## 06E TERMINAL LUGS



**NOTE:** For some 200/230 volt across the line installations, the connection of 3 power wires to the compressor may not be possible because the wire diameter may be too large to fit the below listed lugs. In these instances we recommend that 6 motor leads and 6 terminal lugs be used to connect to the compressor terminal plate. The use of 6 leads (instead of 3) allows for a wire size reduction. Consult the National Electric Code or your local electric code for the appropriate wire sizing information.

FITS WIRE SIZE	PART NO.
#8 to #4	HY85TB008 *
#4 to #1	HY85TB004

**PART NO: HY85TB004, -008**

\* 6 per package

## 06D SIGHT GLASS REMOVAL TOOL

PART NO

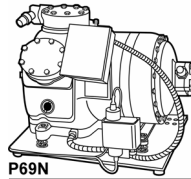
T-133300B-1

## 06D TERMINAL LUG SOCKET TOOL

PART NO

P920-0009

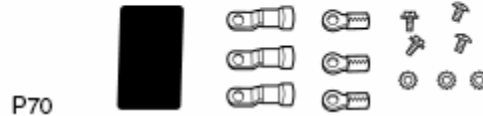
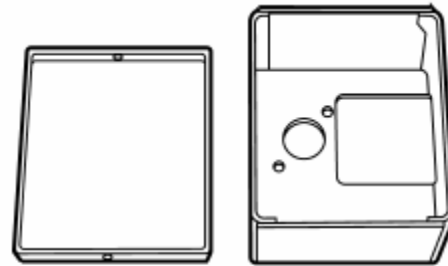
## 06D TERMINAL BOX KITS



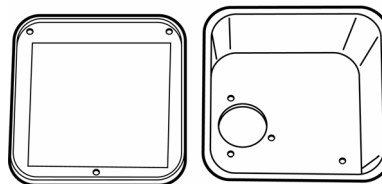
This kit consists of the terminal box and cover plus all screws, washers, and terminals.

PART NO

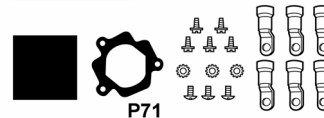
06DA660075



06DA660075 can be used in place of 06DA660078 Terminal Box and Cover Package if overloads are to be used with the compressor. However, it may be necessary to field fabricate a mounting box spacer to allow the 06DA660075 box to mount on the compressor body without interfering with the Compressor Terminal Insulator.



The 06DA660078 Terminal Box and Cover Package mounts directly to the Terminal Plate.

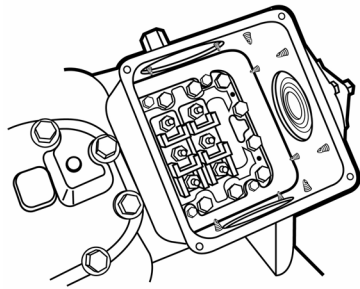


PART NO

06DA660078

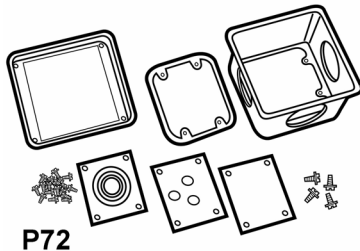
# CARLYLE SEMI-HERMETIC COMPRESSORS/ACCESSORIES

## 06E TERMINAL BOX KITS



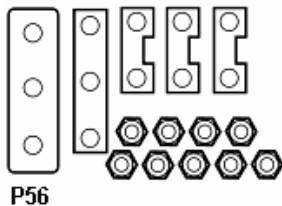
This kit consists of the terminal box, cover, gasket and 3 cover plates (one blank, one with 3 knockouts, one with concentric knockouts). Screws are included.

**Part No.: 06EA660095**



P72

## 06E ACCESSORY ACROSS-THE-LINE JUMPER BAR KIT WITH JAM NUTS



P56

**Part No.: 06EA660141**

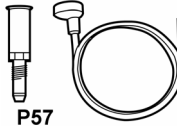
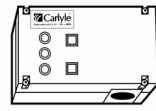
### 06D Replacement Terminal Plate Kit

**Part No.: 06DA660-134**

### Replacement Gasket Only

**Part No.: 6D401061**

## 06D, 06E ELECTRONIC LUBE OIL CONTROL



P57

- Solid State
- LED'S continuously display status of the compressor lubrication system.
- When control is connected to 06E bearing head or 6D68-952A (new 06D bearing head) external tubing is eliminated.
- Timing is not cumulative as in controls using a thermal timing circuit. Each time a low oil pressure condition is sensed the time delay will be of full duration.
- Short cycle protection - select either 35, 65 or 100 second time delay periods to prevent rapid cycling (feature can also be bypassed)
- Manual Reset

PART NO

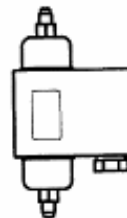
06DA660115

## SPECIAL GASKET FOR TRANSDUCER & BEARING HEAD CONNECTION

PART NO

06DA680-063

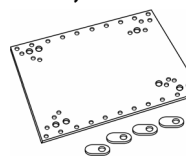
## 06D, 06E LUBE OIL CONTROL



PART NO

060B2008

## 06D, 06E COMPRESSOR MOUNTING PLATE KIT



This universal mounting plate kit will accommodate any size 06D or 06E compressor offered by RCD. The kit includes the predrilled mounting plate, spacers and template.

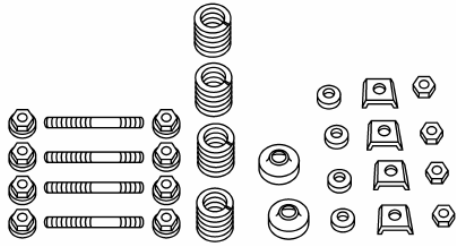
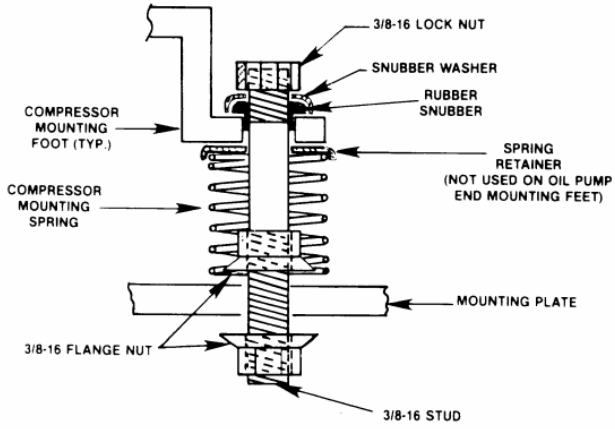
PART NO

06EA660096

# CARLYLE SEMI-HERMETIC COMPRESSORS/ACCESSORIES

CARLYLE SEMI-HERMETIC COMPRESSORS/ACCESSORIES

## 06D, 06E SUSPENSION KIT



P58

COMPRESSOR MODEL NO.	SUSPENSION KIT PART NO.	
06ET150 250 265 175 275 299	06EA660089 ↓	
06EX150 250 166 266 265 175 275 199 299		
06EY150 166 175 099		06EA660089 ↓
06EZ150 266 175 199		
06DX8186 7246 8246 3286 3376 5376		

COMPRESSOR MODEL NO.	SUSPENSION KIT PART NO.
06DR1096 0136 3166 7186 8206 7246 2286 3376	06DA660058 06DA660056 06DA660056 06DA660056 06DA660056 06DA660057 06DA660057 06DA660057
06DM8086 3136 3166 8186 3376 5376 7246 8246	06DA660058 06DA660056 06DA660056 06DA660056 06DA660056 06DA660057 06DA660057 06DA660057
06CY016 018 124 228 337 550 665 675 899	06DA660057 06DA660057 06DA660057 06DA660057 06EA660089 06EA660089 06EA660089 06EA660089

# CARLYLE SEMI-HERMETIC COMPRESSORS/ACCESSORIES

## 06D COMPRESSOR OVERLOADS

COMPRESSOR SIZE	VOLTAGE	PART NO.	REMARKS
06DR109	208/230-1-60	HN69GZ025 HN69GZ032	Common Start
06DM808 06DR013	208/230-1-60	HN69GZ024 HN69GZ014	Common Start
06DM313 06DM316 06DR316 06DR718	208/230-1-60	HN69GZ106 HN69GZ037	Common Start
06DR109	208/230	HN69GZ007	2 Required
	460	HN69GZ015	2 Required
	575	HN69GZ011	2 Required
06DM808 06DR013	208/230	HN69GZ053	2 Required
	460	HN69GZ012	2 Required
	575	HN69GZ012	2 Required
06DM313 06DM316 06DR316 06DR718	208/230	HN69GZ024	2 Required
	460	HN69GZ014	2 Required
	575	HN69GZ032	2 Required
06DA818 06DR820 06DR724 (25)	208/230	HN69GZ214	2 Required
	460	HN69GZ038	2 Required
	575	HN69GZ037	2 Required
06DA824 (25) 06DR228	208/230	HN69GZ306	2 Required
	460	HN69GZ010	2 Required
	575	HN69GZ053	2 Required
06DA328 06DM337 06DR337	208/230	HN69GZ309	3 Required
	460	HN69GZ024	2 Required
	575	HN69GZ025	2 Required
06DA537 06DR541	208/230	HN69GZ214	4 Required**
	460	HN69GZ106 or HN69GZ307	2 Required
	575	HN69GZ301	2 Required

\*Based on new High Efficiency (HE) extended voltage compressor models.

\*\*Two overloads in parallel in legs 1 and 3.

**NOTE:** Most 06D compressors have internal thermostat installed in motor & wired across terminals 8 & 9 at the terminal block. It trips (opens) control circuit at 221°F (105°C) and resets at 181°F (83°C).

# CARLYLE SEMI-HERMETIC COMPRESSORS/ACCESSORIES

CARLYLE SEMI-HERMETIC COMPRESSORS/ACCESSORIES

## SHIPPING PAD INFORMATION

MODEL	SUCTION VALVE BLANK OFF PAD	BOLTS	SUCTION VALVE PAD GASKET	DISCHARGE VALVE BLANK OFF PAD	BOLTS	DISCHARGE VALVE PAD GASKET
<b>06DR</b>						
<b>109</b>	06DA504283*	(2) AA06GR199	6D23-1421	06DA504283*	(2) AA06GR199	6D23-1421
<b>013, 316</b>	06DA504253*	(2) AA06GR202	6D40-1131	06DA504243*	(2) AA06GR202	6D23-1421
<b>718, 820</b>	06DA502573*	(4) AA06GR293	6D68-1131	06DA504243*	(2) AA06GR202	6D23-1421
<b>724, 228, 337</b>	06DA502573*	(4) AA06GR293	6D68-1131	06DA504253*	(2) AA06GR202	6D40-1131
<b>06DM</b>						
<b>808</b>	06DA504283*	(2) AA06GR199	6D23-1421	06DA504283*	(2) AA06GR199	6D23-1421
<b>313, 316, 818</b>	06DA504253*	(2) AA06GR202	6D40-1131	06DA504243*	(2) AA06GR202	6D23-1421
<b>724, 824</b>						
<b>2 BOLT SUC. VAL.</b>	06DA504253*	(2) AA06GR202	6D40-1131	06DA504243*	(2) AA06GR202	6D40-1421
<b>4 BOLT SUC. VAL.</b>	06EA502573*	(4) AA06GR293	6D68-1131	06DA504243*	(2) AA06GR202	6D40-1421
<b>337, 537</b>	06EA502573*	(4) AA06GR293	6D68-1131	06DA504253*	(2) AA06GR202	6D40-1421
<b>06DX</b>						
<b>818</b>	06DA504253*	(2) AA06GR202	6D40-1131	06DA504243*	(2) AA06GR202	6D23-1421
<b>724, 824 W/:</b>						
<b>2 BOLT SUC. VAL.</b>	06DA504253*	(2) AA06GR202	6D40-1131	06DA504243*	(2) AA06GR202	6D40-1131
<b>4 BOLT SUC. VAL.</b>	06EA502273*	(4) AA06GR293	6D68-1131	06DA504243*	(2) AA06GR202	6D40-1131
<b>328, 337, 537</b>	06EA502273*	(4) AA06GR293	6D68-1131	06DA504253*	(2) AA06GR202	6D40-1131
<b>06DS</b>						
<b>313, 818</b>	06DA504253*	(2) AA06GR202	6D40-1131	06DA504243*	(2) AA06GR202	6D23-1421
<b>824</b>	06EA502573*	(4) AA06GR293	6D68-1131	06DA504243*	(2) AA06GR202	6D40-1131
<b>328, 537</b>	06EA502573*	(4) AA06GR293	6D68-1131	06DA504253*	(2) AA06GR202	6D40-1131
<b>06ET</b>						
<b>150, 250</b>	06EA502573*	(4) AA06GR293	6D68-1131	06DA504253*	(2) AA06GR200	6D40-1131
<b>265</b>	06EA502573*	(4) AA06GR293	6D68-1131	06EA502573*	(4) AA06GR200	6D68-1131
<b>175, 275, 199, 299</b>	06EA402653*	(4) AA06GR323	06EA500181	06EA502573*	(4) AA06GR293	6D68-1131
<b>06EX</b>						
<b>150, 250</b>	06EA502573*	(4) AA06GR293	6D68-1131	06DA504253*	(2) AA06GR200	6D40-1131
<b>265</b>	06EA502573*	(4) AA06GR293	6D68-1131	06EA502573*	(4) AA06GR200	6D68-1131
<b>166</b>	06EA502573*	(4) AA06GR293	6D68-1131	06DA504253*	(2) AA06GR200	6D40-1131
<b>175, 275, 199, 299</b>	06EA402653*	(4) AA06GR323	06EA500181	06EA502573*	(4) AA06GR293	6D68-1131
<b>06EY</b>						
<b>150, 165</b>	06EA402653*	(4) AA06GR323	06EA500181	06DA504253*	(2) AA06GR200	6D40-1131
<b>166, 175, 099</b>	06EA402653*	(4) AA06GR323	06EA500181	06EA502573*	(4) AA06GR293	6D68-1131
<b>06EZ</b>						
<b>150, 266</b>	06EA402653*	(4) AA06GR323	06EA500181	06DA504253*	(2) AA06GR200	6D40-1131
<b>175, 199</b>	06EA402653*	(4) AA06GR323	06EA500181	06EA502573*	(4) AA06GR293	6D68-1131

\*05GA501762 plug required.

Unloader valve blank off plate: 06DA501032 for both 06D and 06E models.

# OILS

## TOTALINE COMPRESSOR OILS - FOR CARLYLE AND TOTALINE COMPRESSORS

COMPRESSOR MODEL	REFRIGERANT R-12, R-22 (L & H TEMP.)		REFRIGERANT R-507, R-404A (MED. TEMP)		REFRIGERANT R-507, R-404A (LOW. TEMP)		REFRIGERANT R-134A (M & H TEMP)	
	OIL MODEL	TOTALINE PART NO.	OIL MODEL	TOTALINE PART NO.	OIL MODEL	TOTALINE PART NO.	OIL MODEL	TOTALINE PART NO.
Carlyle 06D, E semi-hermetic	Zerol 150	P903-2001 P903-2005 P903-2025	SW68	P903-1001 P903-1025 P903-1005	E68 (Do not use SW-68 for Low Temp)	P903-1725 P903-1701 P903-1705	SW68	P903-1001 P903-1025 P903-1005
	RO 15	P903-0101 P903-0105 P903-0155						
Carlyle 5F/H open	Zerol 150	P903-2001 P903-2005 P903-2025	SW68	P903-1001 P903-1025 P903-1005	E68 (Do not use SW-68 for Low Temp)	P903-1725 P903-1701 P903-1705	SW 68	P903-1001 P903-1025 P903-1005
	RO 15	P903-0101 P903-0105 P903-0155						
Carlyle 05T/06T Screw (74)	E-100	P903-1501 P903-1505 P903-1525	E-100	P903-1501 P903-1505 P903-1525	E-100	P903-1501 P903-1505 P903-1525	E-100	P903-1501 P903-1505 P903-1525
Carlyle 06N Screw (104 mm Global Chiller)	N/A	N/A	N/A	N/A	N/A	N/A	SW-220 (R-134a Only)	P903-1201 P903-1225 P903-1205
Millennium Scroll Technologies	Zerol 150	P903-2001 P903-2005 P903-2025	Mobil Artic 32	N/A	N/A	N/A	Mobil Arctic 68 Model now obsolete	



# OILS

## TOTALINE OILS

### MINERAL REFRIGERATION OILS



P893

This is a refined oil used specifically for air conditioning and refrigeration. The low moisture content means less failure. This non-foaming, wax-free oil to prevent plugged capillaries and sticking expansion valves. OEM approved by most manufacturers.

PART NO	SIZE	VISCOSITY
P903-0101	1 GAL (3.8 liters)	150
P903-0105	5 GAL (18.9 liters)	150
P903-0155	55 GAL (208.2 liters)	150
P903-0201	1 GAL (3.8 liters)	300
P903-0205	5 GAL (18.9 liters)	300
P903-0255	55 GAL (208.2 liters)	300
P903-0301	1 GAL (3.8 liters)	500
P903-0305	5 GAL (18.9 liters)	500
P903-0355	55 GAL (208.2 liters)	500

### VACUUM PUMP OIL



P894

A highly purified purpose vacuum pump oil that cleans and lubricates. The quart bottle (9.5 liters) has a convenient flip-top-cap.

PART NO	SIZE
P903-0632	1 QT (.95 liters)
P903-0601	1 GAL (3.8 liters)
P903-0605	5 GAL (18.9 liters)
P903-0655	55 GAL (208.2 liters)

### POLYOL-ESTER OILS



P1544

These environmentally friendly products are specifically formulated to use with the non-CFC refrigerant R-134a. The base fluids have been engineered to be totally miscible with R134a over a very wide temperature range while maintaining excellent lubricating properties.

PART NO	SIZE	TYPE
P903-1025	1 QT (.95 liters)	SW68
P903-1001	1 GAL (3.8 liters)	SW68
P903-1005	5 GAL (18.9 liters)	SW68
P903-1125	1 QT (.95 liters)	SW32
P903-1101	1 GAL (3.8 liters)	SW32
P903-1105	5 GAL (18.9 liters)	SW32
P903-1225	1 QT (.95 liters)	SW220
P903-1201	1 GAL (3.8 liters)	SW220
P903-1205	5 GAL (18.9 liters)	SW220

### ALKYL BENZENE REFRIGERATION OILS



P1545

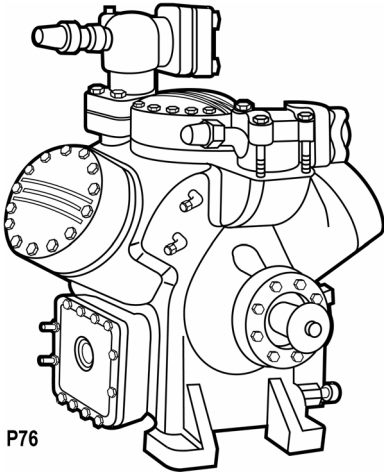
The Z-Series are high quality synthetic Alkylbenzene Refrigeration fluids for use with HCFC, CFC and ammonia refrigerants in refrigeration and air conditioning applications. Due to superior miscibility, Totaline Z-Series lubricants are excellent for systems utilizing environmentally sound refrigerants MP39, MP60, HP80 or HP81. Totaline Z-Series are superior products for all R-22, R-123 and R-502 Systems, particularly at low temperatures. Z-200CX is formulated with a unique additive package providing extreme pressure (EP) lubricity and foam control at operating conditions.

PART NO	SIZE	TYPE
P903-2025	1 QT (.95 liters)	Z-150
P903-2001	1 GAL (3.8 liters)	Z-150
P903-2005	5 GAL (18.9 liters)	Z-150
P903-2125	1 QT (.95 liters)	Z-200CX
P903-2101	1 GAL (3.8 liters)	Z-200CX
P903-2105	5 GAL (18.9 liters)	Z-200CX
P903-2225	1 QT (.95 liters)	Z-300
P903-2201	1 GAL (3.8 liters)	Z-300
P903-2205	5 GAL (18.9 liters)	Z-300

# CARLYLE OPEN DRIVE COMPRESSORS

## 5F AND 5H

### OPEN-DRIVE COMPRESSOR APPLICATION DATA



P76

NOW UPDATED WITH HFC REFRIGERANTS

CARLYLE OPEN DRIVE COMPRESSORS

MODEL NO	NOMINAL HORSEPOWER			# OF CYL	BORE (in)	STROKE (in)	CFM @ 1750 RPM	RATINGS IN TONS*			MIN SPEED FOR UNLOADER OPERATION	OIL CHG (Pints)	SUCTION ODF (in)	DISCH LINE ODF (in)	COMP.WT (lb)
	R-134a	R-22	R-407c					R-22	R-134a	R-407c					
5F20	6.0	10	8.8	2	2-1/2	2	19.8	8.46	5.18	8.17	600	5	1-1/8	7/8	175
5F30	9.0	15	13.0	3	2-1/2	2	29.8	12.7	7.76	12.3	700	5-1/2	1-5/8	1-3/8	215
5F40	11.5	20	17.3	4	2-1/2	2	39.8	16.8	10.5	16.3	800	12	1-5/8	1-3/8	355
5F60	17.0	25	26.0	6	2-1/2	2	59.6	25.6	15.7	24.6	900	13	2-1/8	1-5/8	400
5H40	27.5	40	39.5	4	3-1/4	2-3/4	92.4	39.6	24.7	38.4	800	18	2-5/8	2-1/8	610
5H46	35.4	60	51.4	4	3-1/4	3-7/16	115.5	49.1	30.6	47.5	800	18	2-5/8	2-1/8	610
5H60	40.8	60	59.0	6	3-1/4	2-3/4	138.4	59.4	37.0	57.6	900	21	3-1/8	3-1/8	795
5H66	53.0	75	76.8	6	3-1/4	3-7/16	173.0	73.8	45.9	71.4	900	21	3-1/8	3-1/8	795
5H80	54.6	75	78.4	8	3-1/4	2-3/4	184.7	79.2	49.5	76.8	1100	41	3-1/8	3-1/8	1115
5H86	70.5	100	102.0	8	3-1/4	3-7/16	231.0	98.2	61.1	95.3	1100	41	3-1/8	3-1/8	1115
5H120	80.5	125	117.1	12	3-1/4	2-3/4	276.0	119.0	74.0	115.3	900	61	4-1/8	4-1/8	1580
5H126	101.4	150	152.3	12	3-1/4	3-7/16	346.0	149.0	91.8	143.0	900	61	4-1/8	4-1/8	1580

#### NOTES:

1. \*40° F saturated suction, 105° F saturated discharge, 15° F superheat, 0° F subcooling.
2. 45 PSIG net oil pressure (oil pressure PSIG - suction pressure PSIG).
3. ODF = Outside Diameter Female (in.).
4. Maximum RPM = 1750.
5. Minimum RPM for lubrication = 400 RPM.
6. Must use oil cooler on long stroke models: 5H46, 5H66, 5H86, 5H126 (see Accessory page for oil cooler part number)

#### 5F & 5H COMPRESSOR MODELS AVAILABLE

5F COMPRESSOR MODELS	
COMPRESSOR PART NO.	NO. OF UNLOADERS
5F20-S674	0
5F20-A684	1
5F20-S684	1
5F30-A189	0
5F30-S644	0
5F30-A219	2
5F30-S664	2

5F/5H COMPRESSOR MODELS	
COMPRESSOR PART NO.	NO. OF UNLOADERS
5F40-A219	3
5F40-S219	3
5F60-A219	4
5F60-S219	4
5H40-(+)219	3
5H46-(+)219	3

5H COMPRESSOR MODELS	
COMPRESSOR PART NO.	NO. OF UNLOADERS
5H60-(+)219	4
5H66-(+)219	6
5H80-(+)219	6
5H86-(+)219	6
5H120-(+)219	8
5H126-(+)219	8

(+) = May be either "A" (Remanufactured) or "S" (New Manufactured).

For R404a/R507a application data, contact RCD.

# CARLYLE OPEN DRIVE COMPRESSORS

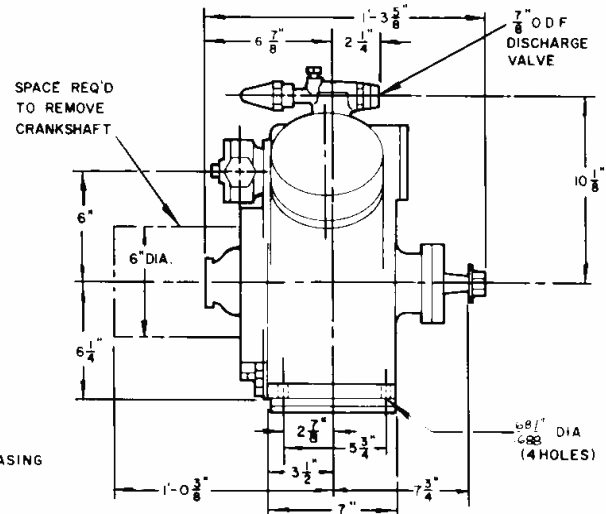
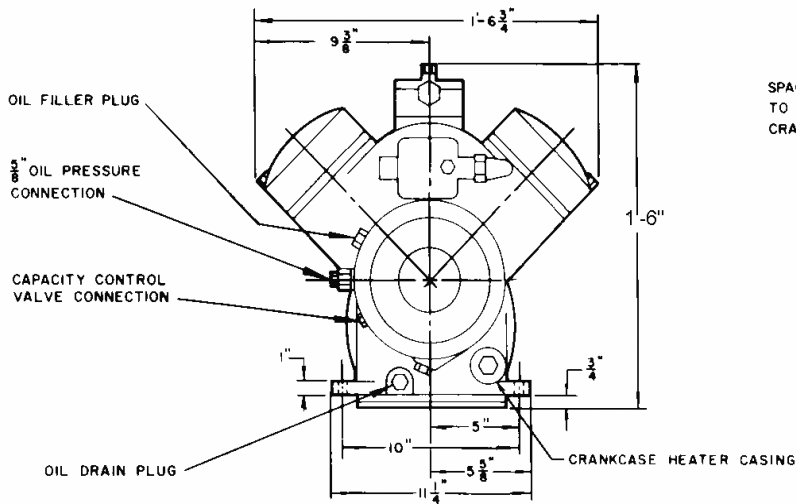
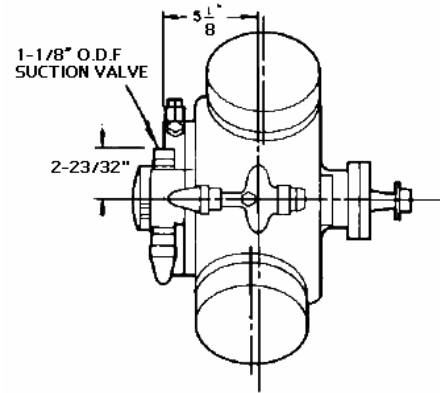
## 5F OUTLINE DRAWINGS

Note: Compressors shown with optional accessories - contact your distributor for details.

### 5F20 COMPRESSOR

Notes:

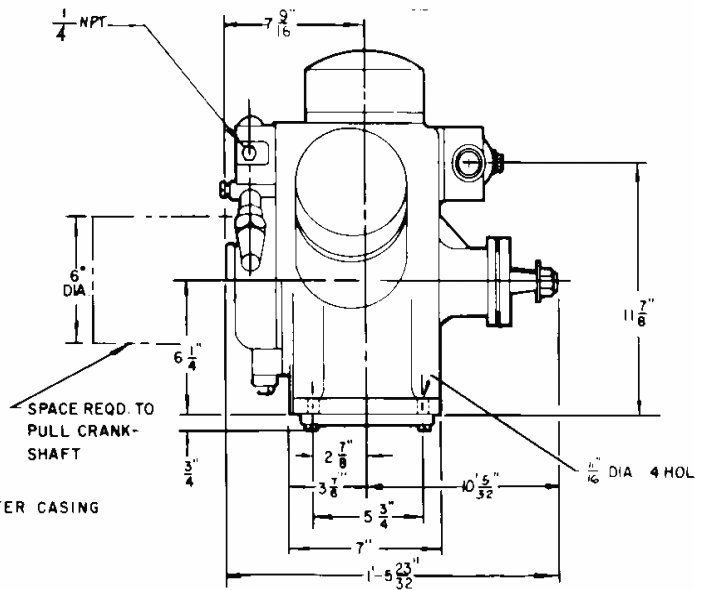
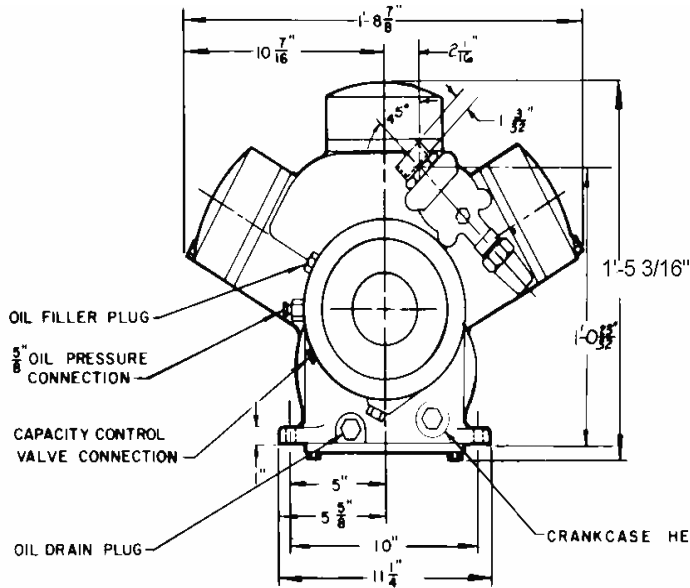
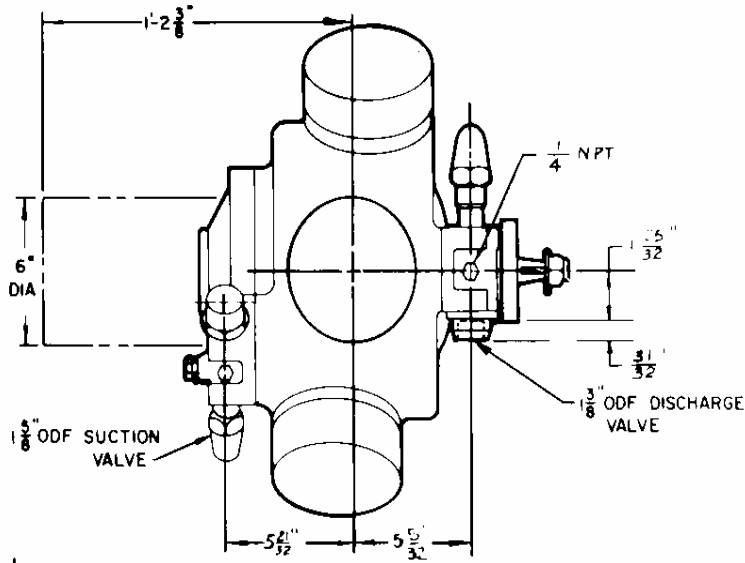
1. Shaft detail drawing 5F-531.
2. Compressor may be operated in either direction of rotation, standard rotation is counterclockwise. Looking from the pump end. For reverse rotation rotate oil pump 180°.
3. Net weight 215 lbs includes oil but not refrigerant charge.



CARLYLE OPEN DRIVE COMPRESSORS

# CARLYLE OPEN DRIVE COMPRESSORS

## 5F30 COMPRESSOR



Note:

1. Shaft detail drawing 5F-531.
2. Compressor may be operated in either direction of rotation. Standard rotation is counterclockwise Looking from the pump end. For reverse rotation rotate oil pump  $180^\circ$ .
3. Net weight 215 lbs includes oil but not refrigerant charge.

CARLYLE OPEN DRIVE COMPRESSORS

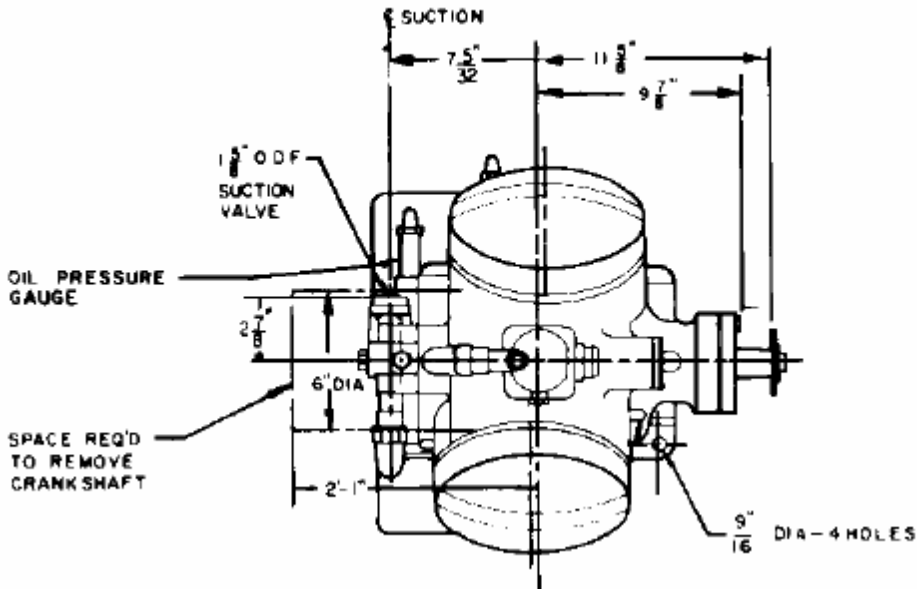
# CARLYLE OPEN DRIVE COMPRESSORS

## 5F OUTLINE DRAWINGS

Note: Compressors shown with optional accessories - contact your distributor for details.

### 5F40 COMPRESSOR

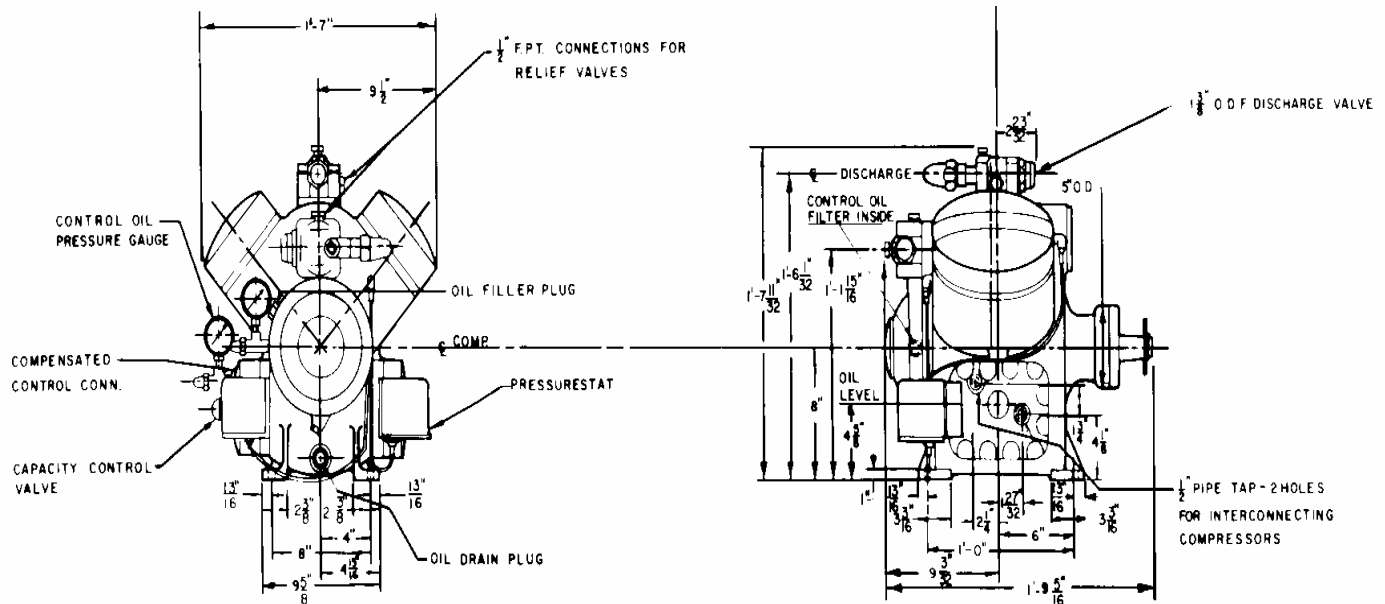
CARLYLE OPEN DRIVE COMPRESSORS



Note: Compressors shown with optional accessories - contact your distributor for details.

Notes:

1. Shaft detail drawing 5F-531.
2. Compressor may be operated in either direction of rotation. Standard rotation is counterclockwise looking from the pump end. For reverse rotation rotate oil pump 180°.
3. Net weight 335 lbs includes oil but not refrigerant charge.

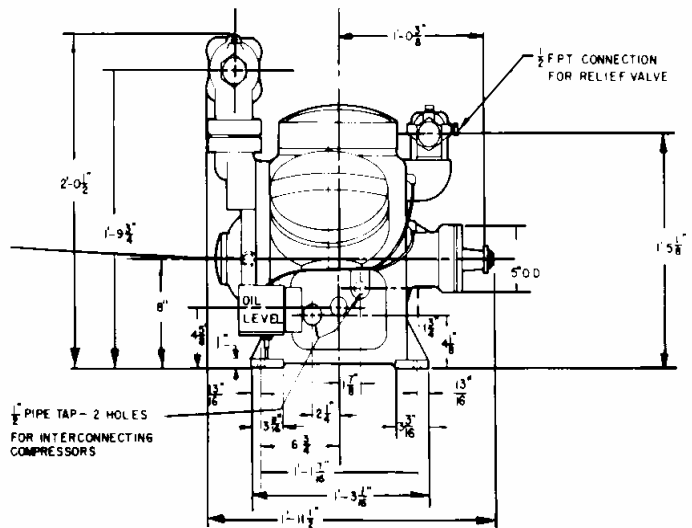
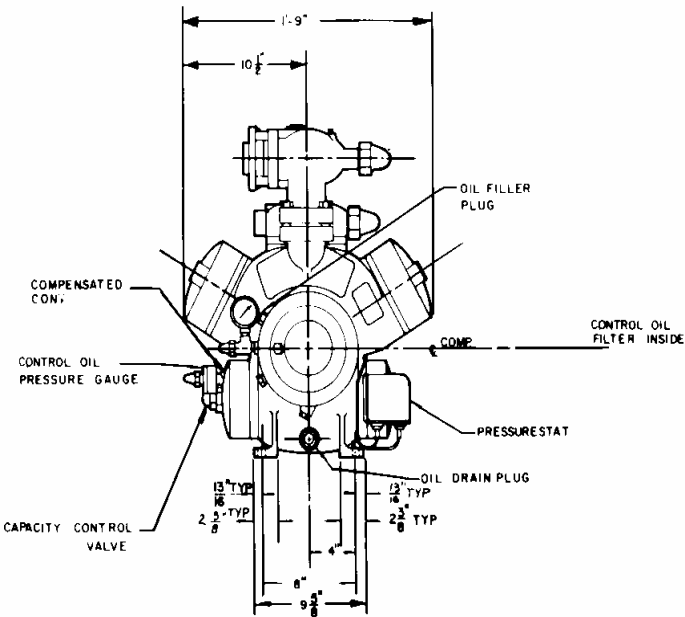
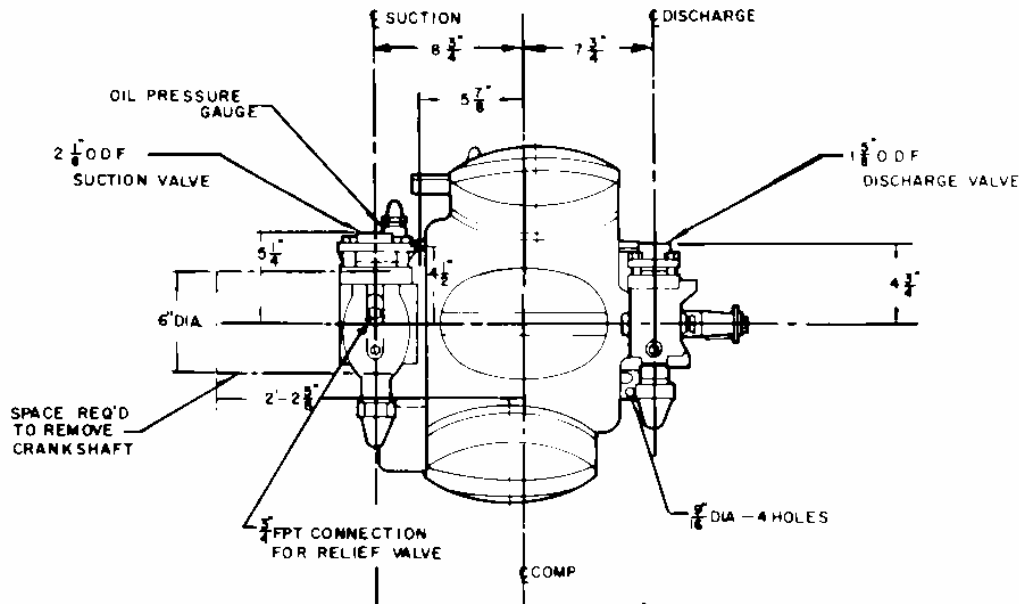


# CARLYLE OPEN DRIVE COMPRESSORS

## 5F OUTLINE DRAWINGS

Note: Compressors shown with optional accessories - contact your distributor for details.

### 5F60 COMPRESSOR



Note: compressors shown with optional accessories - contact your distributor for details.

Notes:

1. Shaft detail drawing 5F-531.
2. Compressor may be operated in either direction of rotation. Standard rotation is counterclockwise Looking from the pump end. For reverse rotation rotate oil pump 180°.
3. Net weight 400 lbs includes oil but not refrigerant charge.

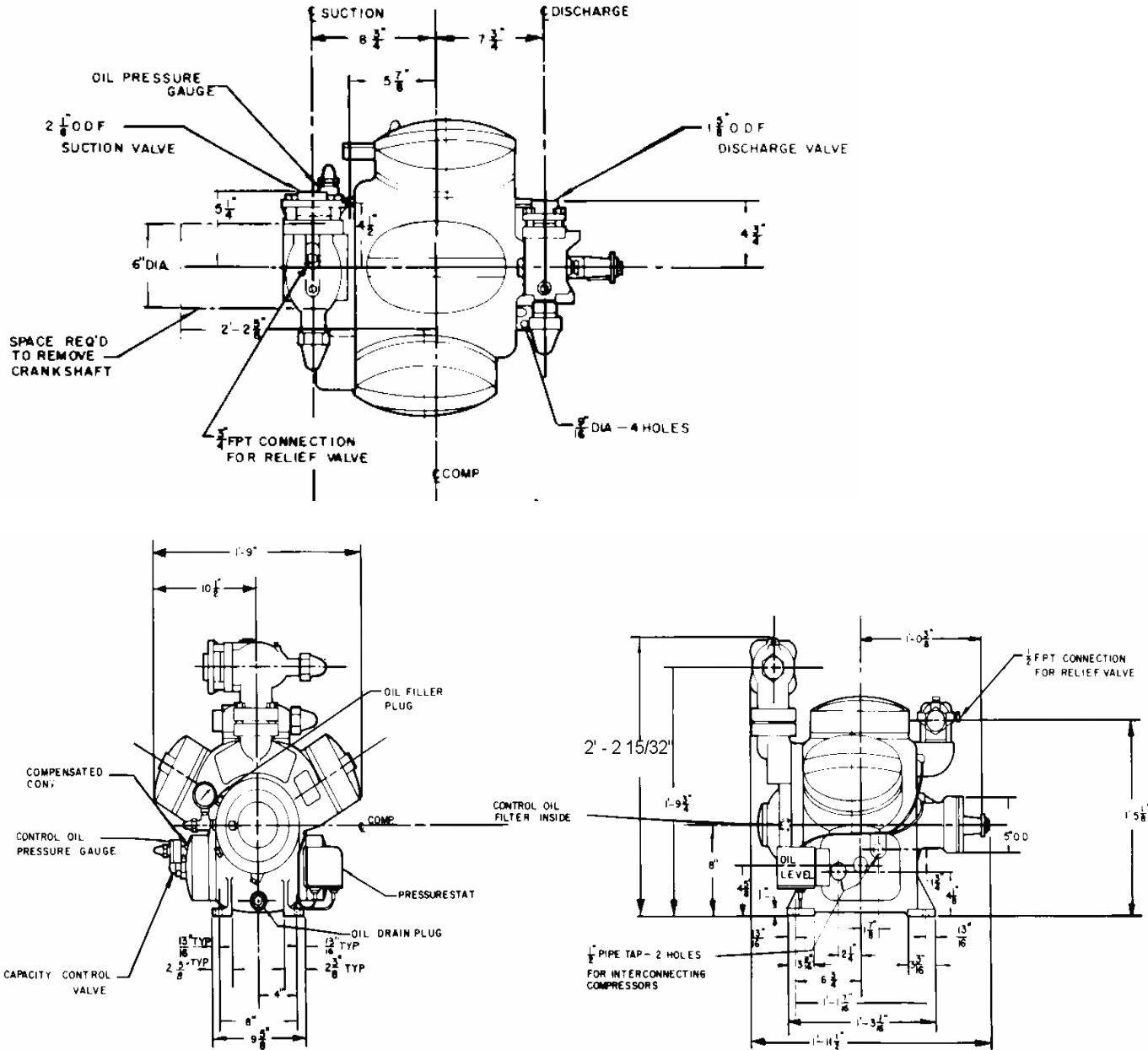


# CARLYLE OPEN DRIVE COMPRESSORS

## 5H OUTLINE DRAWINGS

Note: Compressors shown with optional accessories - contact your distributor for details.

### 5H60 & 66 COMPRESSORS



CARLYLE OPEN DRIVE COMPRESSORS

Note: Compressors shown with optional accessories - contact your distributor for details.

Notes:

1. Shaft detail drawing 5F-531.
2. Compressor may be operated in either direction of rotation. Standard rotation is counterclockwise looking from the pump end. For reverse rotation rotate oil pump 180°.
3. Net weight 795 lbs includes oil but not refrigerant charge.

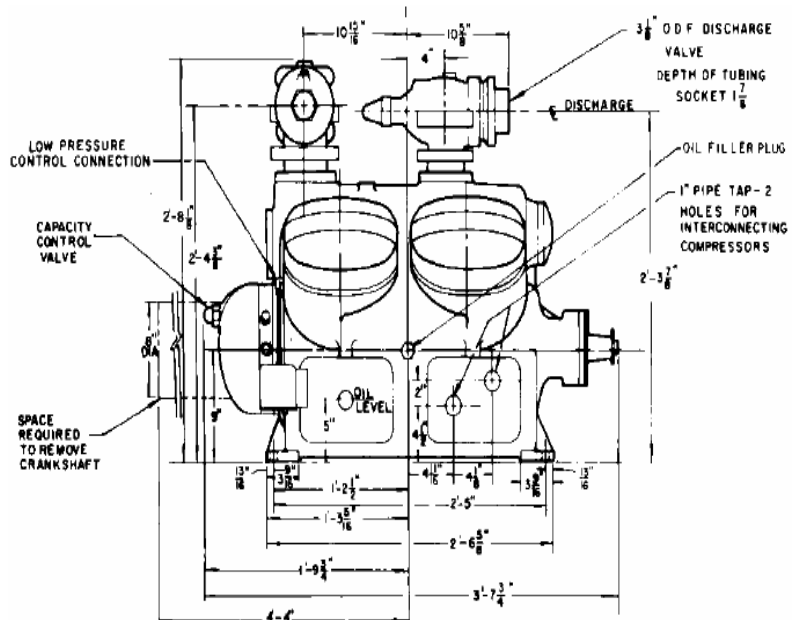
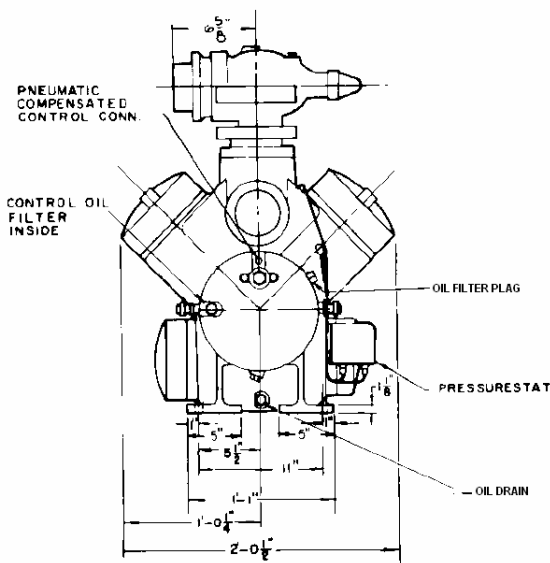
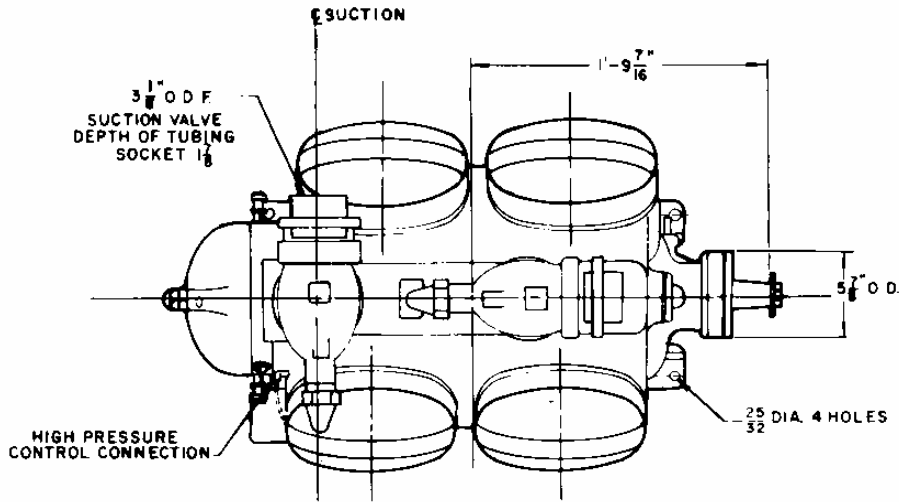
# CARLYLE OPEN DRIVE COMPRESSORS

## 5H OUTLINE DRAWINGS

Note: Compressors shown with optional accessories - contact your distributor for details.

### 5H80 & 86 COMPRESSORS

CARLYLE OPEN DRIVE COMPRESSORS



Note: Compressors shown with optional accessories - contact your distributor for details.

Notes:

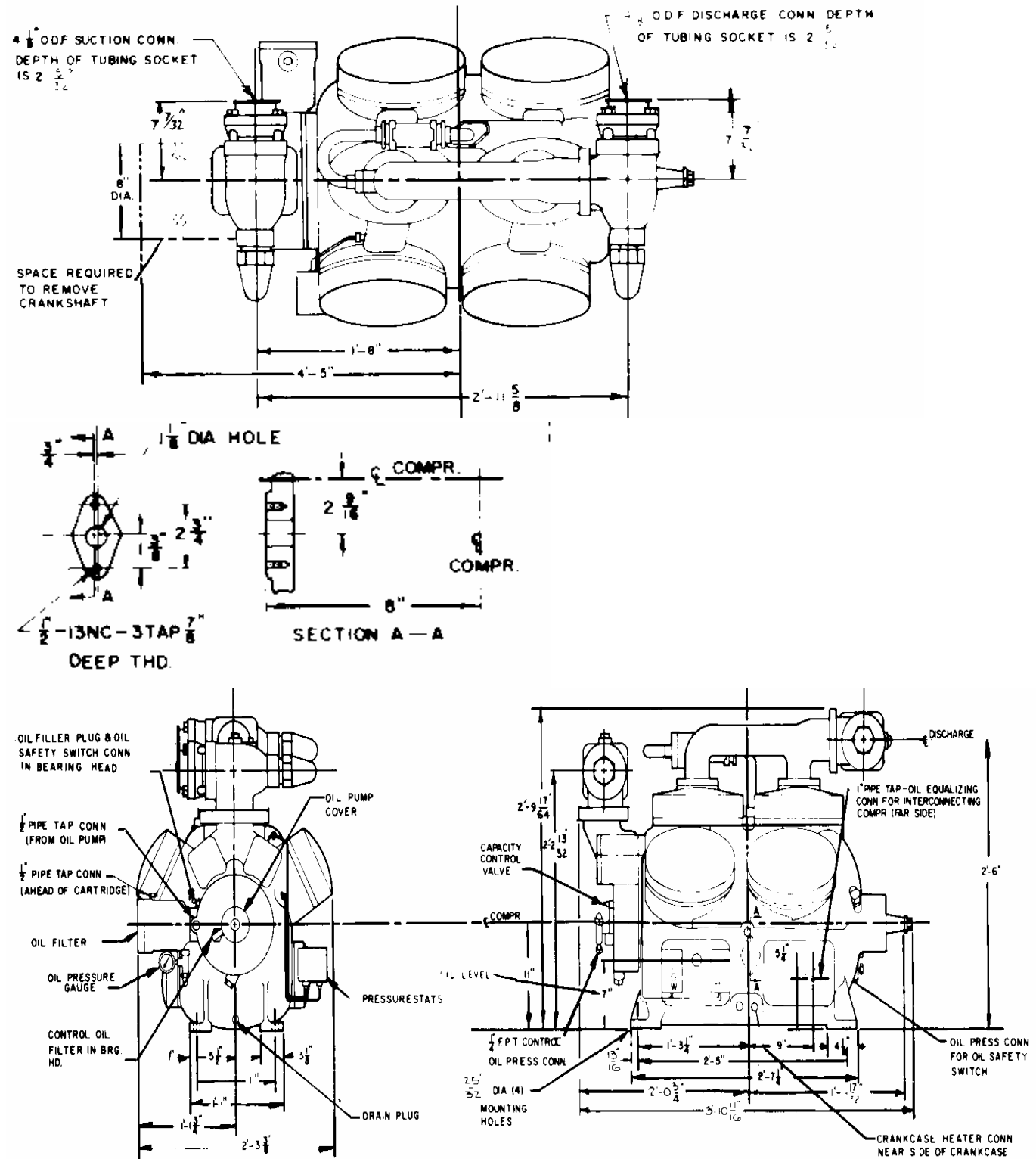
1. Shaft detail drawing 5F-531.
2. Compressor may be operated in either direction of rotation. Standard rotation is counterclockwise Looking from the pump end. For reverse rotation rotate oil pump 180°.
3. Net weight 1115 lbs includes oil but not refrigerant charge.

# CARLYLE OPEN DRIVE COMPRESSORS

## 5H OUTLINE DRAWINGS

Note: Compressors shown with optional accessories - contact your distributor for details.

### 5H120 & 126 COMPRESSORS



Note: Compressors shown with optional accessories - contact your distributor for details.

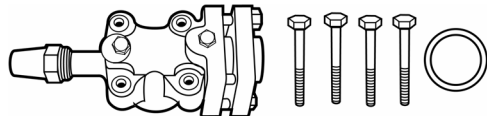
Notes:

1. Shaft detail drawing 5F-531.
2. Compressor may be operated in either direction of rotation. Standard rotation is counterclockwise looking from the pump end. For reverse rotation rotate oil pump 180°.
3. Net weight 1580 lbs includes oil but not refrigerant charge.

# CARLYLE OPEN DRIVE COMPRESSORS/ACCESSORIES

## SERVICE VALVES

### 5F COMPRESSORS



P77

COMPRESSOR MODEL	SUCTION SERVICE VALVE PART NO	DISCHARGE SERVICE VALVE PART NO
5F20-S674	06DA660063	06DA660062
5F20-A684	06DA660063	06DA660062
5F20-S684	06DA660063	06DA660062
5F30-A189	06EA660090	06DA660065
5F30-S644	06EA660090	06DA660065
5F30-A219	06EA660090	06DA660065
5F30-S664	06EA660090	06DA660065
5F40-A219	06EA660090	06DA660065
5F40-S219	06EA660090	06DA660065
5F60-A219	5F660-002	5F660-001
5F60-S219	5F660-002	5F660-001

### 5H COMPRESSORS

COMPRESSOR MODEL	SUCTION SERVICE VALVE PART NO	DISCHARGE SERVICE VALVE PART NO
5H40-(+)219	5H660-008	5F660-002
5H46-(+)219	5H660-008	5F660-002
5H60-(+)219‡	06LA660010	06LA660010
5H66-(+)219‡	06LA660010	06LA660010**
5H80-(+)219	06LA660010*	06LA660010**
5H86-(+)219	06LA660010*	06LA660010
5H120-(+)219‡	06LA660011	06LA660011
5H126-(+)219‡	06LA660011	06LA660011

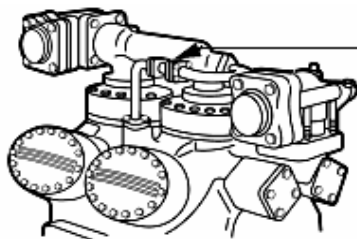
(+) May be either "A" (Remanufactured) or "S" (New Manufactured).

‡ These Models require a suction and a discharge manifold in order to mount the service valve.

\* Requires a suction valve adapter (Part No.: 5H660-006).

\*\* Requires a discharge valve adapter (Part No.: 5H660-005).

## RELIEF VALVE KIT



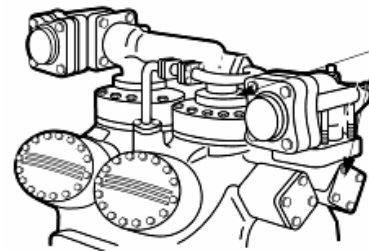
P78

Relief Valve Kit

Compressor Models 5H 120 & 126  
Require the addition of a relief valve  
and associated piping.

**P/N: 5H120-337**

## MANIFOLDS



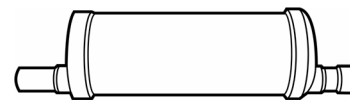
MANIFOLDS

P78

The Models listed requires a suction and discharge manifold in order to mount the service valve.

COMPRESSOR MODEL	SUCTION MANIFOLD PART NO	DISCHARGE MANIFOLD PART NO
5F60-A219	5F60-1094	NONE
5H60, 66	5H660-007	5H660-007
5H120, 126	5H660-001	5H660-003

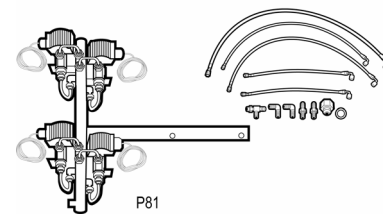
## MUFFLERS



P75

COMPRESSOR MODEL	MUFFLER PART NO	LENGTH (in)	CONNSIZE (in)
5F20	06DA605614	11-1/4	1-1/8 O.D.F
5F30, 40, 60	05HY500853	13-3/4	1-3/8 O.D.F
5H40, 46, 60, 66	05HY500863	22-5/8	2-5/8 O.D.F
5H80, 86, 120, 126	05HY501013	22-5/8	3-1/8 O.D.F

## EXTERNAL UNLOADER CONVERSION KIT



P81

Kit is used to bypass the standard 5 line responds 5F40/5H126 cylinder unloading system that to suction pressure. A field supplied controller is used in conjunction with this kit to control solenoid valves that activate/deactivate cylinder unloaders. External capacity control results in more precise compressor capacity matching to the load.

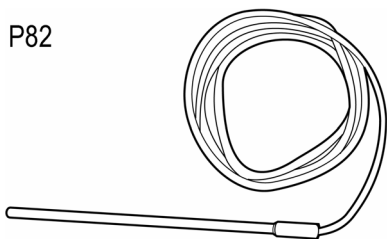
COMPRESSOR MODEL	PART NO
5F40	5F40-4FI-A
5F60	5F60-4FI-A
5H40, 46	5H40-4FI-A
5H60, 66, 80, 86	5H60-4FI-A
5H120, 126	5H120-4FI-A

5F Kits contain hand hole cover.  
5H Kits contain blankoff plates.  
120 Volt solenoid coils.

# CARLYLE OPEN DRIVE COMPRESSORS/ACCESSORIES

## CRANKCASE HEATERS

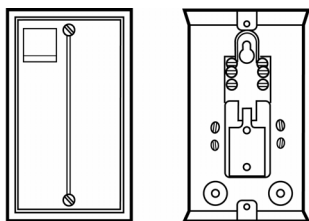
P82



COMPRESSOR MODEL USED ON	PART NO	WATTS	VOLTS	LEAD LENGTH (in)	SHEATH LENGTH (in)
5F20, 30, 40, 60	HT31AZ120	100	120	48	7
5F20, 30, 40, 60	H731AZ240	100	240	48	7
5H40, 46, 60, 66, 80*, 86*, 120*, 126*	HT31AZ121	200	120	63	7
5H40, 46, 60, 66, 80*, 16*, 120*, 126*	HT31AZ241	200	240	63	7

\*These Models Require Two Heaters.

## CRANKCASE HEATER RELAYS



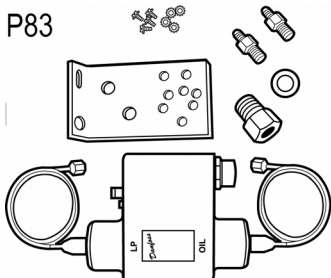
P85

The Crankcase Heater Relay is used to energize the Heater when the compressor is not in operation. The Crankcase Heater Relay is not required when using 32 Series control panels.

PART NO	COIL VOLTS
HN61AJ101	120
HN61AJ108	240

## 5F/5H LUBE OIL CONTROL

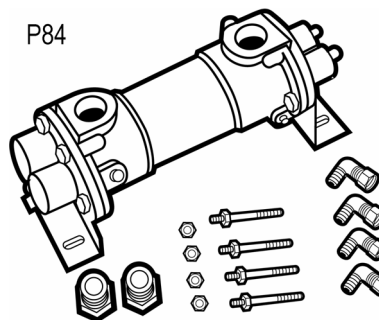
P83



KIT	PART NO	Control Only	TIME DELAY	CONNECTION S	PRESSURE DIFFERENTIAL CUT			RESET
					IN	OUT	VOLTS	
5F20-212	P529-4120		45 Seconds	36" Lg. Cap w/1/4" Fl. Nuts	15-20 psi	11-15 psi	115/230	Manual

## OIL COOLER PACKAGE

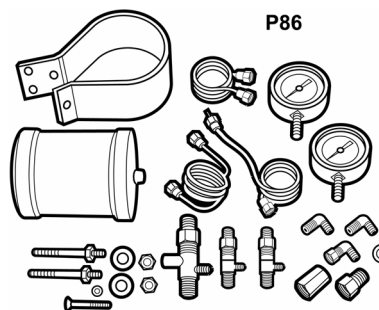
P84



COMPRESSOR MODEL USED ON	PART NO
All 5F	5F20-B103
5H40, 46, 60, 66, 80, 86	5H40-B283
5H120, 126	5H120-B283

## OIL FILTER PACKAGE

P86



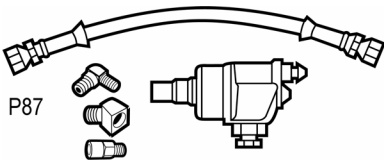
Package Includes: (1) partial flow oil filter with fittings, (2) angle valves, tubing and (2) oil pressure gauges. All 5H120,126 are supplied standard with a full flow oil filter.

Use on: 5H40, 46, 60, 66, 80, 86 compressor models  
**P/N: 5H40-A274**  
**OIL FILTER ONLY . . . . . P/N: 05HG660020**

CARLYLE OPEN DRIVE COMPRESSORS/ACCESSORIES

# CARLYLE OPEN DRIVE COMPRESSORS/ACCESSORIES

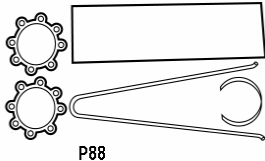
## CAPACITY CONTROL VALVE PACKAGE



For use on 5F20,30 compressors.

COMPRESSOR MODEL	PART NO	REFRIGERANT USAGE
5F20, 30	5F20-752	R-12
5F20, 30	5F20-A752	R-22,R-502

## FELT FILTER KIT

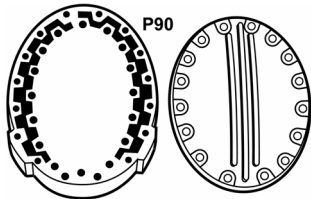


Felt Filters are installed in the compressor's suction strainer as a temporary clean up medium.  
NOTE: Filter Kit is included with service compressors.

COMPRESSOR MODEL	PART NO		
	KIT	FILTER ONLY	NO FILTERS REQUIRED PER COMP
5F40, 46	5F40-A352	5F40-3792	1
5F60, 66	5F60-A352	5F60-3792	2
5H40, 46	5H40-A382	5H40-4032	1
5H60, 66	5H60-A382	5H60-4032	2
5H80, 86	5H80-A382	5H80-4032	1
5H120, 126	5H120-A382	5H120-4552	2

## WATER-COOLED HEAD PACKAGE

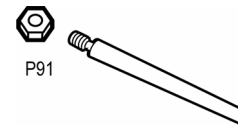
### 5H COMPRESSORS



Water Cooled Heads are required for compressors used on low temp R-22 applications. See Compressor Ratings on pages 4 & 5 for application ranges. The water cooled head packages listed contain the necessary heads, covers, gaskets, and fittings to convert standard 5F/H compressors to water cooled heads.

COMPRESSOR MODEL	PART NO
5H40, 46	5H40-507
5H60, 66	5H60-507
5H80, 86	5H80-507
5H120, 126	5H120-507
5F20	5F20-172
5F30	5F30-172
5F40	5F40-172
5F60	5F60-172

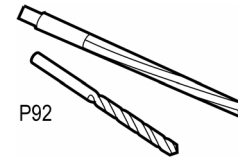
## DOWEL PIN



Tapered dowel pin (no. 6 x 2-3/4" long) is used to maintain alignment and to ensure exact compressor/ motor repositioning after service. Two Pins are required for both motor and compressor.  
(Pins for motor are included in motor fastening package.)

P/N: AX35AA238

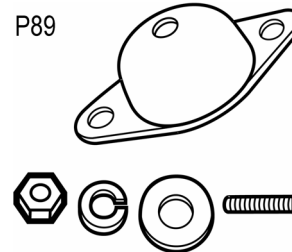
## DRILL & REAMER KIT



Drill and reamer kit includes a 9/32 in. drill bit and a no. 6 taper reamer to facilitate installation of the no. 6 tapered dowel pin.

P/N: 5H40680004

## VIBRATION ISOLATORS

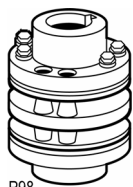


VIBRATION ISOLATORS limit the transfer of vibration. They are attached underneath the surface to which the compressor is mounted. Four isolators are supplied in each package. One for each corner of the unit. Associated hardware is also included. Select proper size isolator by dividing total unit weight by 4.

PART NO	ISOLATOR LOADING LBS/ISOLATOR
5F20-623	90 to 150
5F30-623	150 to 210
5F60-633	210 to 290
5F60-663	290 to 390
5H40-653	350 to 450
5H60-673	450 to 650
5H80-673	650 to 950
5H120-467	950 to 1250
5H120-527	1250 to 1550

# CARLYLE OPEN DRIVE COMPRESSORS/ACCESSORIES

## FLEXIBLE STEEL COUPLINGS FOR DIRECT DRIVE UNITS



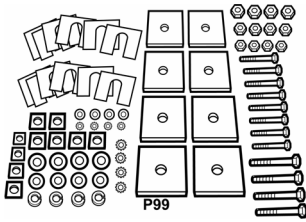
NOTE: A Dial Indicator must be used to properly align the compressor and motor shafts for reliable operation.

COMPRESSOR MODEL	PART NO	H P	MOTOR		SHAFT DIA (in)	MAXIMUM COUPLING HP RATING	WT (lbs)
			FRAME SIZE				
5F20, 30	5F20-847	7-1/2,10	213T, 215T		1.375	11.5	10
5F20, 30	5F30-847	15	254T		1.625	17.5	10
5F40, 60	5F40-603	7-1/2,10	213T, 215T		1.375	17.5	15
5F40, 60	5F40-623	15	254T		1.625	17.5	15
5F40, 60	5F60-623	20	256T		1.625	30.0	21
5F40, 60	5F60-613	25,30	284T, 286T		1.875	34.5	21
5H40, 46	5H40-613	20	256T		1.625	34.5	21
5H40, 46	5H60-613	25,30	284T, 286T		1.875	65	24
5H40, 46	5H60-613	40,50,60	324TS, 326TS, 364TS		1.875	65	24
5H40, 46	5H60-623	40,50	324T, 326T		2.125	65	24
5H40, 46	5H80-613	60	364T		2.375	86	30
5H60, 66	5H60-613	30	286T		1.875	65	24
5H60, 66	5H60-613	40,50,60	324TS, 326TS, 364TS		1.875	65	24
5H60, 66	5H60-623	40,50	324T, 326T		2.125	65	24
5H60, 66	5H80-613	60,75	364T, 365T		2.375	86	30
5H60, 66	5H80-663	75	365TS		1.875	86	30
5H60, 66	5H120-623	100	404TS		2.125	150	35
5H80, 86	5H60-613	40,50,60	324TS, 326TS, 364TS		1.875	65	24
5H80, 86	5H60-623	40,50	324T, 326T		2.125	65	24
5H80, 86	5H80-613	60,75	364T, 365T		2.375	86	30
5H80, 86	5H80-663	75	365TS		1.875	86	30
5H80, 86	5H120-623	100	404TS, 405TS		2.125	150	35
5H120, 126	5H60-613	60	364TS		1.875	65	24
5H120, 126	5H80-613	60,75	364T, 365T		2.375	86	30
5H120, 126	5H80-663	75	365TS		1.875	86	30
5H120, 126	5H120-623	100,125	404TS, 405TS		2.125	150	35
5H120, 126	5H126-623 *	100,125	404T, 405T		2.875	200	40
5H120, 126	5H126-623 *	150,200	444TS, 445TS		2.375	200	40

\*When 5H126-623 coupling is used with a 404T or 405T frame motor, field boring is required. Enlarge motor bore to 2.875/2.8755 in. diameter. Increase Keyway size to 3/4 x 3/8 in.

# CARLYLE OPEN DRIVE COMPRESSORS/ACCESSORIES

## MOTOR FASTENING KITS FOR DIRECT DRIVE APPLICATIONS

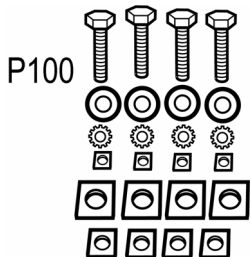


Motor Fastening Kit includes steel blocks and shims to align motor shaft to compressor shaft, hardware to attach motor to base and tapered dowel pins to pin motor to base and lock in alignment. Not enough memory to convert the items on the clipboard.

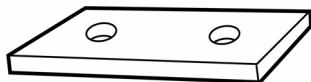
COMPRESSOR			MOTOR		
MODEL	SHAFT HT (in)	H P	FRAME SIZE	SHAFT HT (in)	PART NO
5F20, 30	6-1/4	7-1/2,10	213T, 215T	5-1/4	5F40-401
5F20, 30	6-1/4	7-1/2,10	213T, 215T	6-1/4	5F40-801
5F20, 30	6-1/4	15	254T	5-1/4	5F40-801
5F40, 60	8	7-1/2,10	213T, 215T	6-1/4	5F40-801
5F40, 60	8	15,20	254T, 256T	7	5F40-401
5F40, 60	8	25,30	284T, 286T	6-1/4	5F40-401
5H40, 46	9	20	256T	7	5F40-801
5H40, 46	9	25,30	284T, 286T	8	5H40-401
5H40, 46	9	40,50	324, 326 T/Ts	9	5F40-401
5H40, 46	9	60,75	364, 365 T/Ts	7	5F60-401
5H60, 66	9	30	286T	8	5H40-401
5H60, 66	9	40,50	324, 326 T/Ts	9	5F40-401
5H60, 66	9	60,75	364, 365 T/Ts	10	5F60-401
5H60, 66	9	100	404 T/Ts	8	5F60-401
5H80, 86	9	40,50	324, 326 T/Ts	9	5F40-401
5H80, 86	9	60,75	364, 365 T/Ts	10	5F60-401
5H80, 86	9	100,125	404, 405 T/Ts	9	5F60-401
5H120, 126	11	60,75	364, 365 T/Ts	10	5H40-401
5H120, 126	11	100,125	404, 405 T/Ts	11	5F40-401
5H120, 126	11	150,200	444, 445 TS		5F60-401

NOTE: Motor Fastening kit approximate shipping weight is 42 lbs.

## MOTOR FASTENING KIT FOR BELT DRIVE APPLICATIONS



Motor Fastening Kit attaches motor to base. Kit includes: bolts, nuts and washers.



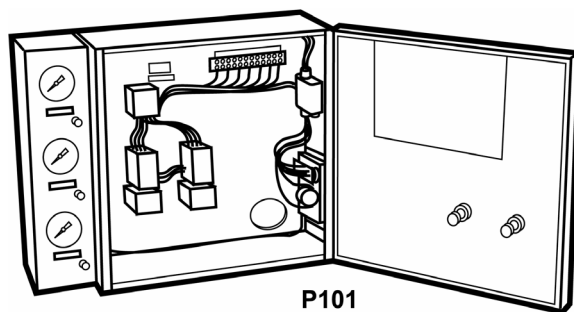
COMPRESSOR MODEL	PART NO	SIZE	MOTOR FRAME SIZE
5F20, 30	5F20-821	5, 7-1/2, 10	184T, 213T, 215T
5F30	5F30-821	15	254T
5F40, 60	5F20-821	7-1/2, 10,15, 20, 25	213T, 215T,254T, 256T, 284T
5H40	5F30-821	20, 25, 30,40,50	256T, 284T, 286T,324T, 326T
5H60	5F30-821	40,50	324T, 326T
5H60	5H40-711	40,50,60,75	324T, 326T,364T, 365T
5H80, 120	5H40-711	40,50,60,75,100,125,150	324T, 326T, 364T, 365T,404T, 405T, 444T

Compressor Mounting Block is used when a 5H66,80,86 is matched to a 100 Hp motor, or when a 5H86 is matched to a 125 Hp motor. The block raises compressor to allow alignment between compressor and motor shaft. Two blocks are required per compressor.

P/N: 5H40-1422

# CARLYLE OPEN DRIVE COMPRESSORS/ACCESSORIES

## CONTROL PANELS



Control panels are designed for indoor use to control compressor and condensing units from 5 thru 150 Hp, in 208 to 575 volts, across-the-line starting applications. All units operate on 120 volt control circuit. Control panel easily mounts on one end of the unit base. Simple conversion to part-winding starting on 2 contactor models by adding time delay Part No. HN67ZA001. Single contactor panels require the addition of another contactor of the same size and time delay Part No. HN67ZA001.

\* Single overload panels: overload dial is set at a value equal to NEC motor full load current rating and will trip at 125% of this rating. If tripping is required at 115% of NEC motor full load current rating, set the overload dial to value 0.92 times F.L.C. value. Two overload panels: Each overload dial is set at a value equal to one half of NEC motor full load current rating and will trip at 125% of the setpoint. If tripping is required at 115% of NEC motor full load current rating, set each overload dial to value of 0.92 times one half of F.L.C. value.

### FEATURES:

#### ETL APPROVED

**OIL PRESSURE SAFETY SWITCH** protects compressor against damage from low oil pressure.

**TIME GUARD** circuit protects compressor and motor against short cycling.

**OVERLOAD RELAY\*** manual reset.

**SUCTION, DISCHARGE, OIL PRESSURE GAUGES** display operating conditions.

#### GAUGE SHUTOFF VALVES

**CAPILLARIES** supplied for pressure gauges and switches.

#### CONTACTORS

**TERMINAL BLOCKS** for field connections.

#### GROUNDING LUG

**CRANKCASE HEATER RELAY** energizes heater on compressor shutdown to prevent dilution of oil by refrigerant.

**PUMPOUT RELAY** safeguards compressor against liquid refrigerant slugging on start-up.

#### ELAPSED RUNNING TIME METER

**WIRE ASSEMBLIES** provided in conduit are used to connect panel box and external controls to a junction box (provided).

#### FUSE, ON-OFF SWITCH, NEMA ENCLOSURE

#### HINGED COVER

**HEAVY DUTY PANEL MOUNTING BASE** is provided. Can be welded to compressor base or attached with supplied hardware.



# CARLYLE OPEN DRIVE COMPRESSORS/ACCESSORIES

## CONTROL PANELS

\*From the National Electrical Code based on motor horsepower and voltage.

†AC3 rating is an IEC (International Electrical Code) rating per U.L. standards.

The contactors supplied with the panels are not definite purpose contactors.

They are specific to motor switching circuits.

NOTE: The information presented in the table on the previous page is for the current control panels offered through RCD.

## COMPRESSOR TO DRIVE MOTOR COMBINATIONS

### 5F COMPRESSOR/MOTOR COMBINATIONS

Motor selection is based on compressor rating charts.

#### 5F COMPRESSOR/MOTOR COMBINATIONS

COMPRESSOR MODEL	MOTOR H.P. RATING
5F20	5,7.5,10
5F30	7.5,10,15
5F40	7.5,10,15,20,25
5F60	10,15,20,25,30

NOTE: Extended stroke compressors (5H46,66,86,126) should not be applied on belt drive applications.

#### 5H COMPRESSOR/MOTOR COMBINATIONS

COMPRESSOR MODEL	MOTOR H.P. RATING
5H40	20,25,30,40,50
5H46*	25,30,35,40,50,60
5H60	30,40,50,60,75
5H66*	40,50,60,75,100
5H80	40,50,60,75,100
5H86*	50,60,75,100,125
5H120*	60,75,100,125,150
5H126*	75,100,125,150,200











# CARLYLE REFRIGERATION COMPRESSORS

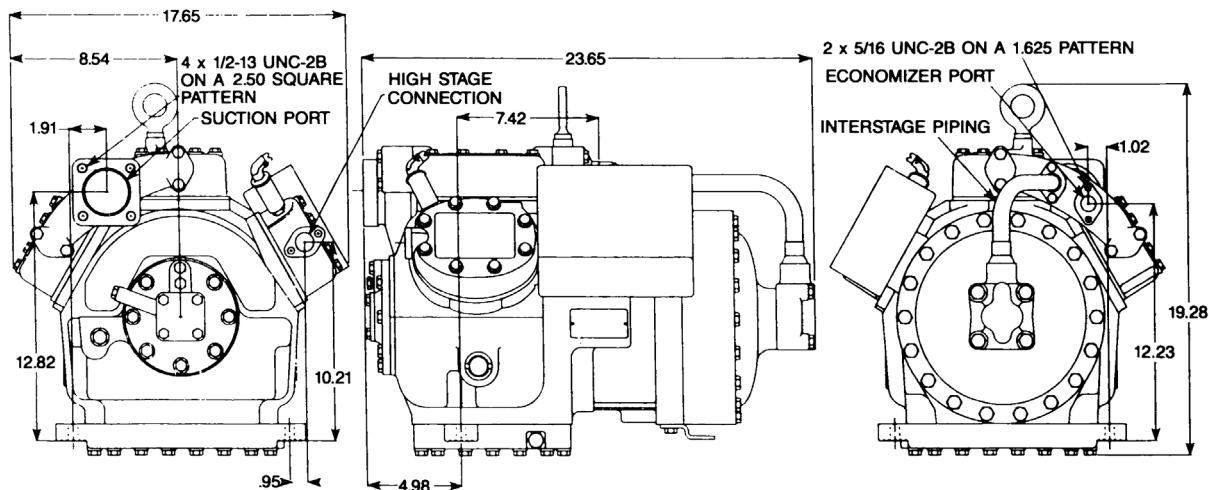
## 06CY OUTLINE DRAWINGS

NOTE: COMPRESSORS SHOWN WITH OPTIONAL ACCESSORIES - CONTACT YOUR DISTRIBUTOR FOR DETAILS.

### 06CC COMPRESSORS

	06CY016	06CY018	06CY124	06CY125	06CY228	06CY337
MOTOR HORSEPOWER	5	5	6.5	6.5	7.5	10
NO. OF CYLINDERS	6*	6*	6*	6*	6*	6*
BORE AND STROKE (in.)	2.0 x 1.25	2.0 x 1.47	2.0 x 1.25	2.0 x 1.25	2.0 x 1.47	2.0 x 1.94
DISPLACEMENT CFM AT 1750 RPM	16	18	24	24	28	37
OIL, CHARGE, PINTS CPP33-2	10	10	10	10	10	10
DRY WEIGHT LESS SERVICE VALVES	330 LBS	330 LBS	340 LBS	340 LBS	340 LBS	345 LBS

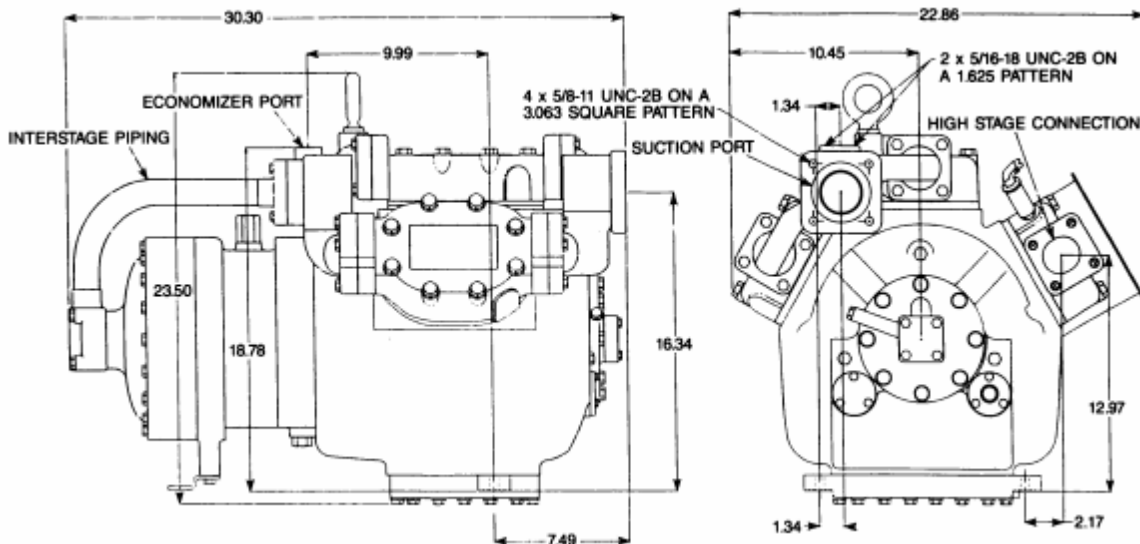
\* 4 FIRST STAGE, 2 SECOND STAGE.



### 06CC COMPRESSORS

	06CY550	06CY665	06CY675	06CY899
MOTOR HORSEPOWER	15.0	20.0	20.0	30.0
NO. OF CYLINDERS	6*	6*	6*	6*
BORE AND STROKE (in.)	2.69 x 2.16	2.69 x 1.96	2.69 x 2.19	2.69 x 2.87
DISPLACEMENT CFM AT 1750 RPM	50	65	75	99
OIL, CHARGE, PINTS CPP33-2	19	19	19	19
DRY WEIGHT LESS SERVICE VALVES	545 LBS	555 LBS	555 LBS	580 LBS

• 4 FIRST STAGE, 2 SECOND STAGE.



CARLYLE REFRIGERATION COMPRESSORS



# CARLYLE REFRIGERATION COMPRESSORS

## REQUIRED CIRCUIT BREAKERS: 06CY ... 60 HZ

COMPRESSOR MODEL	VOLTAGE	PART #
06CC550J	575	HH83XB438
06CC550F	400/460	HH83XB414
06CC550E	208/230	HH83XB455
	460	HH83XB414
06CC665J	575	HH83XA461
06CC665F	400/460	HH83XB437
06CC665E	208/230	HH83XB376
	460	HH83XB437
06CC675J	575	HH83XA461
06CC675F	400/460	HH83XB437
06CC675E	208/230	HH83XB378
	460	HH83XB437
06CC899J	575	HH83XA430
06CC899F	400/460	HH83XB432
06CC899E	208/230	HH83XC406
	460	HH83XB432

## COMPRESSOR MOTOR DATA

Motor protection for the 06CY016,018,124,125,228,337 models is performed by overloads mounted in the control box.

See table below.

### Electrical Data

COMPRESSOR MODEL NO	VOLT	HP	Max kW	MCC	MAX RLA*	LRA	Motor Winding Resistance (Ohms)	Overload Carlyle Part No
06CY016J101	575	5	6.25	10.8	6.9	40	3.3	HN69GZ032
06CY016D101	208/230	5	6.25	27	17.3	100	0.54	HN69GZ024
06CY016G101	460	5	6.25	13.5	8.7	50	2.1	HN69GZ014
06CY018J101	575	5	6.25	10.8	6.9	40	3.3	HN69GZ032
06CY018D101	208/230	5	6.25	27	17.3	100	0.54	HN69GZ024
06CY018G101	460	5	6.25	13.5	8.7	50	2.1	HN69GZ014
06CY124J101	575	6.5	9.18	13.2	8.5	64	2.6	HN69GZ037
06CY124D101	208/230	6.5	9.18	33	21.2	160	0.42	HN69GZ214
06CY124G101	460	6.5	9.18	16.5	10.6	80	1.7	HN69GZ038
06CY125J101	575	6.5	9.18	13.2	8.5	64	2.6	HN69GZ037
06CY125D101	208/230	6.5	9.18	33	21.2	160	0.42	HN69GZ214
06CY125G101	460	6.5	9.18	16.5	10.6	80	1.7	HN69GZ038
06CY228J101	575	7.5	12.8	16.7	10.2	79	2.0	HN69GZ004
06CY228D101	208/230	7.5	12.8	41.6	26.7	198	0.31	HN69GZ306
06CY228G101	460	7.5	12.8	20.9	13.4	99	1.3	HN69GZ010
06CY337J101	575	10	16.5	18.8	12.1	91	1.7	HN69GZ025
06CY337D101	208/230	10	16.5	46.5	29.8	228	0.26	HN69GZ309
06CY337G101	460	10	16.5	23.3	14.9	114	1.0	HN69GZ024

# CARLYLE REFRIGERATION COMPRESSORS

## REQUIRED ACCESSORIES - 06CY

REQUIRED ACCESSORIES -06CY					OPTIONAL ACCESSORIES	
COMPRESSOR MODEL NO.	SUCTION SERVICE VALVE KIT PART NO.	ALTERNATE SUCTION SERVICE VALVE KIT PART NO.	DISCHARGE SERVICE VALVE KIT PART NO.	ALTERNATE DISCHARGE SERVICE VALVE KIT PART NO.	SUSPENSION KIT PART NO.	MOUNTING PLATE KIT PART NO.
06CY016	06DA660063 06EA660090	06DA660065 -	06DA660062 -	06DA660064	06DA660057	06EA660096
06CY018	06DA660065	06EA660090 06DA660063	06DA660062 -	06DA660064 -	↓	↓
06CY124/125	06DA660065	06EA660090 06DA660063	06DA660062 -	06DA660064 -	↓	↓
06CY228	06DA660065	06EA660090 06DA660063	06DA660062 -	06DA660064 -	↓	↓
06CY337	06DA660090	06EA660065  06DA660063	06DA660064  -	06DA660062  -	↓	↓
06CY550	06EA660090	-	06DA660065	06EA660090	06EA660089	↓
06CY665	06EA660090	-	06DA660065	06EA660090	↓	↓
06CY675	06EA660090	-	06DA660065	06EA660090	↓	↓
06CY899	06EA660090	-	06DA660065	06EA660090	↓	↓

CARLYLE REFRIGERATION COMPRESSORS

# CARLYLE REFRIGERATION COMPRESSORS

## GENERAL NOTES on Refrigeration Screw Compressors 05T & 06T

Compressors are shipped with service valves attached to the compressor pallet and have blankoff pads bolted over service valve openings. Alternate suction and discharge service valves are available.

All 06T screw compressors are suitable for across-the-line or part winding start. Customer is required to hook up terminal plate for applicable voltage. Wiring diagrams and jumpers are included in the compressor terminal box. Compressor part number on nameplate is the same as the package ordering number.

### All 05T and 06T compressors:

- a. Are dehydrated and have a dry air holding charge.
- b. Have no oil charge. Oil must be added to fill the entire oil system from the oil solenoid at compressor back to the oil separator.

### Carlyle requires the following accessories to protect both 05T and 06T compressors:

- oil separator
- oil filter housing
- oil pressure differential switch
- high pressure switch
- oil level switch
- reverse rotation protection switch
- Carlyle Electronic Module
- low pressure switch

### The 05T Compressor further requires:

- C-Flange
- coupling

06T screw compressors provided WITHOUT motor overcurrent protection, which MUST be supplied by the customer. Heinemann calibrated circuit breakers specifically selected for each motor and voltage are a required accessory. All 06T compressor models are UL and CSA approved. The use of authorized overcurrent protection is part of UL recognition.

All 06T compressors are provided with a 5K thermistor installed in the compressor motor to monitor the motor temperature. The CEM is required with **each** 06T to monitor this thermistor.

All compressors are painted green.



# CARLYLE REFRIGERATION COMPRESSORS

## OPEN DRIVE MODELS - For All Temperature Ranges With Service Valves

MODEL NO	DISPLACEMENT (CFM)		MOTOR HP	APPROX SHIP WEIGHT (kg)
	1750 RPM (4 pole)	3500 RPM (4 pole)		
05TRQ033Z3EA-A00	33	65	N/A	91
05TRQ039Z3EA-A00	39	78	N/A	91
05TRQ044Z3EA-A00	44	88	N/A	91
05TRQ048Z3EA-A00	48	N/A	N/A	91
05TRQ054Z3EA-A00	54	N/A	N/A	91

NOTE: APPLICATION LIMITS.

- R-134a
  - Medium temperature
  - Air Conditioning
- R-22
  - Low temperature
  - Medium temperature
  - Air Conditioning
- R-404A/R-507
  - Low temperature
  - Medium temperature

## ACCESSORIES FOR 05T MODELS

### 05T COUPLING PACKAGE

COUPLING PKG	MOTOR SHAFT DIAMETER (in.)	4 POLE MOTOR 1750 Rpm @ 60 Hz 1450 Rpm @ 50 Hz		2 POLE MOTOR 3500 Rpm @ 60 Hz 3000 Rpm @ 50 Hz		APPROX. SHIP. WT (kg)
		Hp	NEMA Frame Size	Hp	NEMA Frame Size	
8TA0868B	1 5/8	15, 20	254TC, 256TC	30	286TC	5
8TA0869B	1 7/8	25, 30	284TC, 286TC	40, 50 60, 75	324TSC, 326TSC, 364TSC, 365TSC	5
8TA0870B	2 1/8	40, 50	324TC, 326TC	N/A	N/A	5

### 05T C-FLANGE PACKAGE

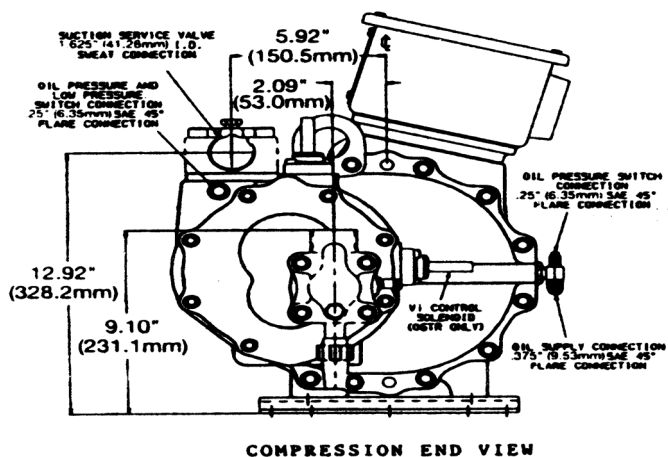
C-FLANGE PKG	4 POLE MOTOR 1750 Rpm @ 60 Hz 1450 Rpm @ 50 Hz		2 POLE MOTOR 3500 Rpm @ 60 Hz 3000 Rpm @ 50 Hz		APPROX. SHIP. WT (kg)
	Hp	NEMA Frame Size	Hp	NEMA Frame Size	
0TA0929	15, 20, 35, 30	254TC, 256TC, 284TC, 286TC	N/A	N/A	25
0TA0930	25, 30	284TC, 286TC	N/A 60, 75	N/A	25
0TA0931	N/A	N/A	40, 50 60, 75	286TC, 324TSC, 226TSC, 364TSC, 365TSC	25



# CARLYLE REFRIGERATION COMPRESSORS

## COMPRESSOR PHYSICAL DIMENSIONS

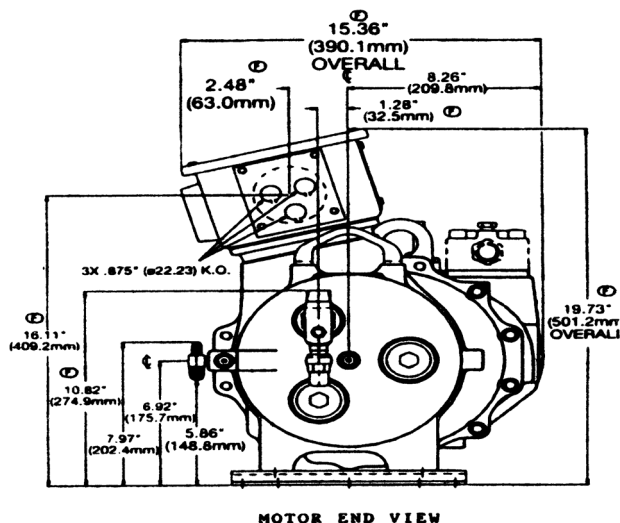
CARLYLE REFRIGERATION COMPRESSORS



COMPRESSION END VIEW

FOR REFERENCE ONLY  
INCHES  
[MILLIMETERS (mm)]

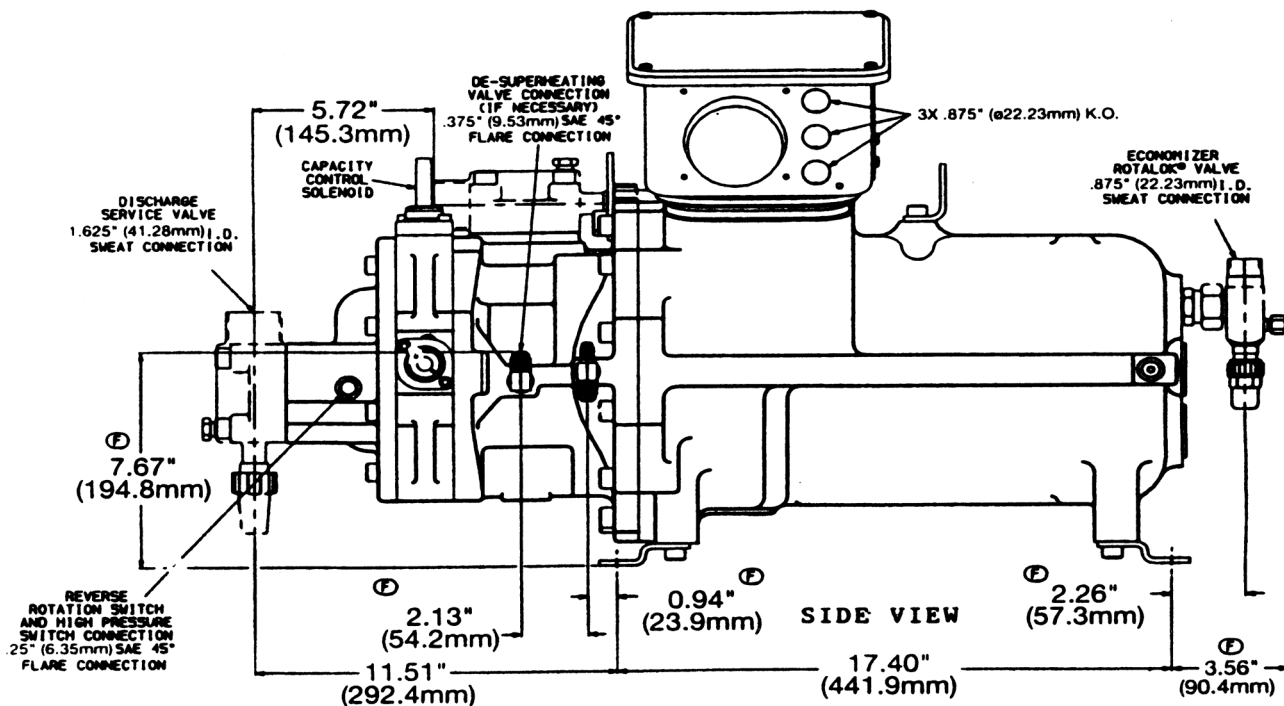
P3031



MOTOR END VIEW

FOR REFERENCE ONLY  
INCHES  
[MILLIMETERS (mm)]

P3032



SIDE VIEW

P3033

# CARLYLE REFRIGERATION COMPRESSORS

## LOW TEMPERATURE DUTY - Semi-Hermetic With Service Valves

CARLYLE REFRIGERATION COMPRESSORS

MODEL NO.	VOLTAGE 3 PHASE		MOTOR HP	APPROX. SHIP. WEIGHT (kg)
	60 HZ	50 HZ		
06TRC033B2EA-A00 F2EA-A00 C2EA-A00	460 208/230 575	400 200 -	15	166
06TRD039B2EA-A00 F2EA-A00 C2EA-A00	460 208/230 575	400 200 -	20	172
06TRD044B2EA-A00 F2EA-A00 C2EA-A00	460 208/230 575	400 200 -	20	172
06TRE048B2EA-A00 F2EA-A00 C2EA-A00	460 208/230 575	400 200 -	25	177
06TRE054B2EA-A00 F2EA-A00 C2EA-A00	460 208/230 575	400 200 -	25	177
06TRF065B2EA-A00 F2EA-A00 C2EA-A00	460 208/230 575	400 200 -	30	181
06TRG078B2EA-A00 F2EA-A00 C2EA-A00	460 208/230 575	400 200 -	35	184
06TRH088B2EA-A00 F2EA-A00 C2EA-A00	460 208/230 575	400 200 -	40	184
06TRK108B2EA-A00 NOTE: 50Hz Applications Only	n/a	400	50	186

NOTE: APPLICATION LIMITS.

- R-134a - Medium temperature
- Air Conditioning
- R-22 - Low temperature

R-404A/R-507 - Low temperature

06TRK model satisfactory for use on high temp, medium temp and low temp applications.

# CARLYLE REFRIGERATION COMPRESSORS

## MEDIUM/HIGH TEMPERATURE DUTY - Semi-Hermetic With Service Valves

MODEL NO.	VOLTAGE 3 PHASE		MOTOR HP	APPROX. SHIP. WEIGHT (kg)
	60 HZ	50 HZ		
06TAD033B2EA-A00	460	400	20	164
F2EA-A00	208/230	200		
C2EA-A00	575	-		
06TAE039B2EA-A00	460	400	25	171
F2EA-A00	208/230	200		
C2EA-A00	575	-		
06TAF044B2EA-A00	460	400	30	171
F2EA-A00	208/230	200		
C2EA-A00	575	-		
06TAF048B2EA-A00	460	400	30	176
F2EA-A00	208/230	200		
C2EA-A00	575	-		
06TAG054B2EA-A00	460	400	35	176
F2EA-A00	208/230	200		
C2EA-A00	575	-		
06TAG065B2EA-A00	460	400	35	180
F2EA-A00	208/230	200		
C2EA-A00	575	-		
06TAH078B2EA-A00	460	400	40	182
F2EA-A00	208/230	200		
C2EA-A00	575	-		
06TAK088B2EA-A00	460	400	50	187
F2EA-A00	208/230	200		
C2EA-A00	575	-		

NOTE: APPLICATION LIMITS.

- R-22 - Medium temperature
- Air Conditioning (High Temperature)
- R-404A/R-507 - Medium temperature

# CARLYLE REFRIGERATION COMPRESSOR ACCESSORIES

## 05T/06T REFRIGERATION COMPRESSOR ACCESSORIES

### ELECTRONIC PHASE MONITOR (REVERSE ROTATION PROTECTION)

(1 Package Per Compressor Recommended)

PART NO	QTY/PKG	WEIGHT (kg)	USAGE
P251-0090	1	1.5	ALL 05/6T compressors

#### NOTES:

1. Protects screw compressor from reverse rotation by monitoring 3-phase input power to compressor motor. Will not let compressor start if sequence is incorrect.
2. This phase monitor will not operate with a variable speed drive inverter.
3. May be used in place of reverse rotation switch; (1) per compressor.

### RUBBER ISOLATION MOUNTS

(1 Package Per Compressor Recommended)

PART NO	QTY/PKG	WEIGHT (kg)	USAGE
KA75KR002	4	0.5	ALL 05/6T compressors

### MUFFLERS

(1 Per Compressor Required)

PART NO	QTY/PKG	WEIGHT (kg)	INLET/OUT	LENGTH	USAGE
LM10HH162	1	3	1-5/8"	9-3/4"	All 05/6T compressor

### OIL SEPARATORS

(1 Per Rack Required)

PART NO	MOUNTING	LINE SIZE	WEIGHT (kg)	DIA	USAGE
KH31ZZ340	VERTICAL	2-1/8"	66	12"	Single Comp.
KH31ZZ212	VERTICAL	2-5/8"	120	14"	Multiple Comp.

#### NOTES:

1. Oil Separators supplied with multiple sight glasses to view oil level.
2. Oil Separators has adapter fitting at bottom to connect KH13LB004 Oil Level Float Switch.

# CARLYLE REFRIGERATION COMPRESSOR ACCESSORIES

## 05T/06T REFRIGERATION COMPRESSOR ACCESSORIES

### OIL LEVEL SWITCH

(1 Per Oil Separator Required)

PART NO	QTY/PKG	WEIGHT (kg)	USAGE
HK13LB004	1	0.5	On vertical oil separators

**NOTE:**

1. Protects compressor against loss of oil in Oil Separator. Screws into bottom.

### HEATER FOR OIL SEPARATOR / OIL RESERVOIR

(2 Per Oil Separator Recommended)

PART NO	QTY/PKG	WEIGHT (kg)	ELECTRICAL CHARACTERISTICS	
			VOLTS	WATTS
HK38KN007	1	0.5	115/230	500

**NOTE:**

1. Heater applied to oil separator to keep refrigerant from accumulating in it during off cycles.

See application guide for application requirements.

### AIR-COOLED OIL COOLERS

(See Application Guide for Requirements)

PART NO	NO OF COMPS@ LOAD	WEIGHT (kg)	ELECTRICAL CHARACTERISTICS	
			VOLTS - PH	HZ
KH51ZZ181	2	23	115/230 V - 1 PH	60/50 HZ
KH51ZZ182	3	57	115/230 V - 1 PH	60/50 HZ
KH51ZZ183	4	91	115/230 V - 1 PH	60/50 HZ
KH51ZZ184	5	98	115/230 V - 1 PH	60/50 HZ

### OIL FILTER HOUSING ASSEMBLY

(2 Per Rack Required)

PART NO	QTY/PKG	WEIGHT (kg)	CONNECTION TYPE	USAGE
KH18MG002	1	4	7/8" Sweat	All 05/6T Compressors

**NOTES:**

1. Oil Housing which allows replacement of filter cartridge.
2. Filter Housing assembly includes (1) 3 micron filter cartridge.
3. (2) per rack recommended.

# CARLYLE REFRIGERATION COMPRESSOR ACCESSORIES

## 05T/06T REFRIGERATION COMPRESSOR ACCESSORIES

### OIL FILTER CARTRIDGE

PART NO	QTY/PKG	WEIGHT (kg)	USAGE
KH39MG002	1	0.5	Replacement Cartridge for KH18MG002 housing

**NOTE:**

1. Carlyle recommends (3) cartridges be left at the job site per oil filter housing.  
Several changeouts will be necessary before the system is free of contaminant.  
If the job is a remodel, more changeouts may be necessary.
2. Each cartridge is supplied with (1) filter housing O ring.

### DESUPERHEATING VALVES

**(1 Per Compressor for R-22 <-32°C & R-404A/R507 <-43°C SST Systems)**

PART NO	QTY/PKG	WEIGHT (kg)	SIZE	USAGE
EA02ZD001	1	1	1 ton	All 05/6T Compressors
EA02ZD002	1	1	1.5 ton	All 05/6T Compressors
EA02ZD030	1	1	2 ton	All 05/6T Compressors
EA02ZD050	1	1	3 ton	All 05/6T Compressors
EA02ZD100	1	1	5 ton	All 05/6T Compressors

### SOLENOID COILS - FOR UNLOADING AND Vi CONTROL

**(1 Per 06TA Compressor Required)  
(2 Per 05TR/6TR Compressor Required)**

PART NO	QTY/PKG	WEIGHT (kg)	ELECTRICAL	USAGE
EF19ZE120	1	0.5	120-1-50/60	All 05/6T Compressors
EF19ZE240	1	0.5	208/240-1-50/60	All 05/6T Compressors
EF19ZE024	1	0.5	24-1-50/60	All 05/6T Compressors

**NOTES:**

1. Solenoid Coil operates either capacity control unloading mechanism or variable volume (Vi) control.
2. 06TR Models require (2) per compressor, 06TA models require (1) per compressor.

### CARLYLE ELECTRONIC MODULE (CEM)

**(1 Per Compressor Required)**

PART NO	QTY/PKG	WEIGHT (kg)	ELECTRICAL	USAGE
3TA0796B	1	0.5	120/240-1-60, 100/200-1-50	All 05/6T Compressors

**NOTES:**

1. Module uses (2) 5K Thermistors, (1) embedded in motor windings and (1) strapped on discharge line (thermistor purchased separately.)
2. The modules control motors and discharge cooling and acts as a safety for overheating protection.

# CARLYLE REFRIGERATION COMPRESSOR ACCESSORIES

## 05T/06T REFRIGERATION COMPRESSOR ACCESSORIES

### 5K THERMISTOR

(1 Per Compressor Required)

PART NO	QTY/PKG	WEIGHT (kg)	ELECTRICAL	USAGE
HH79NZ065	1	0.5	115/240-1-60	All 05/6T Compressors

NOTE: One required per compressor for use with CEM to monitor discharge temperature.

### MOTOR COOLING VALVES

(1 Per Compressor Required)

PART NO	QTY/PKG	WEIGHT (kg)	EVAP SIZE	USAGE
EF28BZ007	1	0.5	1.4	All 05/6T Compressors

NOTE: Used for motor and discharge gas cooling of screw compressors.

### SOLENOID COILS FOR MOTOR COOLING VALVES

(1 Per Compressor Required)

PART NO	QTY/PKG	WEIGHT (kg)	ELECTRICAL	USAGE
P510-XV120D	1	0.5	120-1-50/60	All 05/6T Compressors
P510-XV208D	1	0.5	208/240-1-50/60	All 05/6T Compressors
P510-XV024D	1	0.5	24-1-50/60	All 05/6T Compressors

### REVERSE ROTATION PROTECTION SWITCH

(1 Per Compressor Required)

PART NO	QTY/PKG	WEIGHT (kg)	USAGE
HK01CB002	1	1	All 05/6T Compressors

NOTE: Protects screw compressor from reverse rotation.

# CARLYLE REFRIGERATION COMPRESSOR ACCESSORIES

## 05T/06T REFRIGERATION COMPRESSOR ACCESSORIES

### OIL PRESSURE DIFFERENTIAL SWITCH

(1 Per Compressor Required)

PART NO	QTY/PKG	WEIGHT (kg)	CONNECTION TYPE	VOLTAGE INPUT	USAGE
HH79NZ065	1	0.5	1/4" FLARE	115 or 230	ALL 05/6T compressors

**NOTES:**

1. Senses oil differential between discharge pressure and oil feed to the compressor.
2. Switch setting is for cutout when differential pressure above (45 psid) and has a 30 second time delay.

### OIL FILTER DIFFERENTIAL SWITCH

PART NO	QTY/PKG	WEIGHT (kg)	CONNECTION TYPE	VOLTAGE INPUT	USAGE
HK06CA051	1	2	1/4" FLARE	115 or 230	ALL 05/6T compressors

(1 Per Oil System Recommended)

**NOTES:**

1. Senses oil differential across filters.
2. Switch setting is for cutout when differential pressure exceeds 45 psid and has a 30 second time delay.

### SUCTION AND DISCHARGE SERVICE VALVE PACKAGES

PART NO	QTY/PKG	WEIGHT (kg)	SIZE ODF	USAGE
06TA660001	1	2	1-5/8"	ALL 05/6T compressors 05T/06T 33, 39, 44, 48, 54 CFM
06TA660002	1	2	1-3/8"	ALL 05/6T compressors 05T/06T 33, 39, 44, 48, 54 CFM
06TA660003	1	2	1-1/8"	ALL 05/6T compressors 05T/06T 33, 39, 44, 48, 54 CFM
06TA680008	1	2	1-5/8"	ALL 05/6T compressors 05T/06T 65, 78, 88 CFM

**NOTES:**

1. All service Valves are 4 bolt, 2-1/2" square bolt spacing. Service Valve Package contains (1) service valve, (1) gasket, and (4) metric hex head cap screws (M12 x 1.75 x 60mm).
2. These Service Valve packages (except 06TA680008) are the same as the respective 06D/E packages except the mounting bolts have metric threads.

### ECONOMIZER SERVICE VALVE

PART NO	QTY/PKG	WEIGHT (kg)	SIZE ODF	USAGE
06TA660004	1	2	7/8"	ALL 05/6T compressors

**NOTES:**

1. (1) 06TA660004 package is supplied with each compressor.
2. All Economizer Service Valve contain (1) Rotalock \* valve, (1) O-ring, (1) seal, and (1) connection fitting.

# CARLYLE REFRIGERATION COMPRESSOR ACCESSORIES

## 06T REFRIGERATION COMPRESSOR ACCESSORIES

### CALIBRATED CIRCUIT BREAKERS

(1 Per 06T Compressor)

COMPRESSOR MODEL USAGE	VOLTAGE 3 PHASE	QTY/PKG	WEIGHT (kg)	CIRCUIT BREAKER
06TRC033B2EA-A00	460-3-60 & 400-3-50	1	2	HH83XA463
F2EA-A00	230-3-60 & 200-3-50		2	HH83XB356
C2EA-A00	575-3-60		2	HH83XA460
06TRD039B2EA-A00	460-3-60 & 400-3-50	1	2	HH83XA424
F2EA-A00	230-3-60 & 200-3-50		2	HH83XB336
C2EA-A00	575-3-60		2	HH83XA461
06TRD044B2EA-A00	460-3-60 & 400-3-50	1	2	HH83XA424
F2EA-A00	230-3-60 & 200-3-50		2	HH83XB336
C2EA-A00	575-3-60		2	HH83XA461
06TRE048B2EA-A00	460-3-60 & 400-3-50	1	2	HH83XA426
F2EA-A00	230-3-60 & 200-3-50		3	HH83XC509
C2EA-A00	575-3-60		2	HH83XA469
06TRE054B2EA-A00	460-3-60 & 400-3-50	1	2	HH83XA426
F2EA-A00	230-3-60 & 200-3-50		3	HH83XC509
C2EA-A00	575-3-60		2	HH83XA469
06TRF065B2EA-A00	460-3-60 & 400-3-50	1	2	HH83XA474
F2EA-A00	230-3-60 & 200-3-50		3	HH83XC573
C2EA-A00	575-3-60		2	HH83XB617
06TRG078B2EA-A00	460-3-60 & 400-3-50	1	2	HH83XA476
F2EA-A00	230-3-60 & 200-3-50		3	HH83XC574
C2EA-A00	575-3-60		2	HH83XB618
06TRH088B2EA-A00	460-3-60 & 400-3-50	1	2	HH83XA476
F2EA-A00	230-3-60 & 200-3-50		3	HH83XC575
C2EA-A00	575-3-60		2	HH83XB619
06TRK108B2EA-A00	400-3-50	1	2	HH83XA477

NOTES:

1. Circuit breaker selections are based on across-the-line start.
2. Over current protection required per General Note.
3. Heinemann circuit breaker not required with 05T compressor.

# CARLYLE REFRIGERATION COMPRESSOR ACCESSORIES

## 06T REFRIGERATION COMPRESSOR ACCESSORIES

### CALIBRATED CIRCUIT BREAKERS

CARLYLE REFRIGERATION COMPRESSOR ACCESSORIES

COMPRESSOR MODEL USAGE	VOLTS-PH-HZ	QTY/PKG	WEIGHT (kg)	CIRCUIT BREAKER
06TAD033B2EA-A00 F2EA-A00 C2EA-A00	460-3-60 & 400-3-50 230-3-60 & 200-3-50 575-3-60	1	4 4 4	HH83XA424 HH83XB336* or HH83XB625 HH83XA461
06TAE039B2EA-A00 F2EA-A00 C2EA-A00	460-3-60 & 400-3-50 230-3-60 & 200-3-50 575-3-60	1	4 4 4	HH83XA426 HH83XC509 HH83XA469
06TAF044B2EA-A00 F2EA-A00 C2EA-A00	460-3-60 & 400-3-50 230-3-60 & 200-3-50 575-3-60	1	4 4 4	HH83XA425 HH83XC539 HH83XA430
06TAF048B2EA-A00 F2EA-A00 C2EA-A00	460-3-60 & 400-3-50 230-3-60 & 200-3-50 575-3-60	1	4 4 4	HH83XA425 HH83XC539 HH83XA430
06TAG054B2EA-A00 F2EA-A00 C2EA-A00	460-3-60 & 400-3-50 230-3-60 & 200-3-50 575-3-60	1	4 4 4	HH83XA547 HH83XC532 HH83XA453
06TAG065B2EA-A00 F2EA-A00 C2EA-A00	460-3-60 & 400-3-50 230-3-60 & 200-3-50 575-3-60	1	4 6 4	HH83XA475 HH83XC574 HH83XB618
06TAH078B2EA-A00 F2EA-A00 C2EA-A00	460-3-60 & 400-3-50 230-3-60 & 200-3-50 575-3-60	1	4 6 4	HH83XA476 HH83XC575 HH83XB619
06TAK088B2EA-A00 F2EA-A00 C2EA-A00	460-3-60 & 400-3-50 230-3-60 & 200-3-50 575-3-60	1	4 6 4	HH83XA477 HH83XC576 HH83XB610

\*These breakers are supplied without compression lugs. Customer must provide connectors or use our Power Terminal Parts Connectors for HH83XB Circuit Breakers shown below.

#### NOTES:

1. Circuit breaker selections are based on across-the-line start.
2. Overcurrent protection required per General Note.
3. Heinemann circuit breaker not required with 05T compressor.

### POWER TERMINAL PARTS CONNECTORS FOR HH83XB CIRCUIT BREAKER

PART NO	APPROX SHIP WEIGHT (kg)	USAGE
06EA660152	0.5	#1 - #2 Wire
06EA660153	0.5	#4 Wire

HH83XB series circuit breakers require customer supplied power wire connections at circuit breaker.

Kit includes ring terminal, cap screws and lock washers.

Not required for XA, XC, C or B series circuit breakers.

### TERMINAL PARTS PACKAGES

PART NO	QTY/PKG	WEIGHT (kg)	USE WITH	USAGE
06EA900132	1	0.5	#6 Wire	All 06T Compressors
06EA900102	1	0.5	#4 Wire	All 06T Compressors
06EA900112	1	0.5	#2 Wire	All 06T Compressors
06EA900122	1	0.5	#1/0 Wire	All 06T Compressors

Package Contents: (6) Ring Terminal to connect power wiring to compressor terminal studs, plus (3) spare (2-hole) jumper bars.